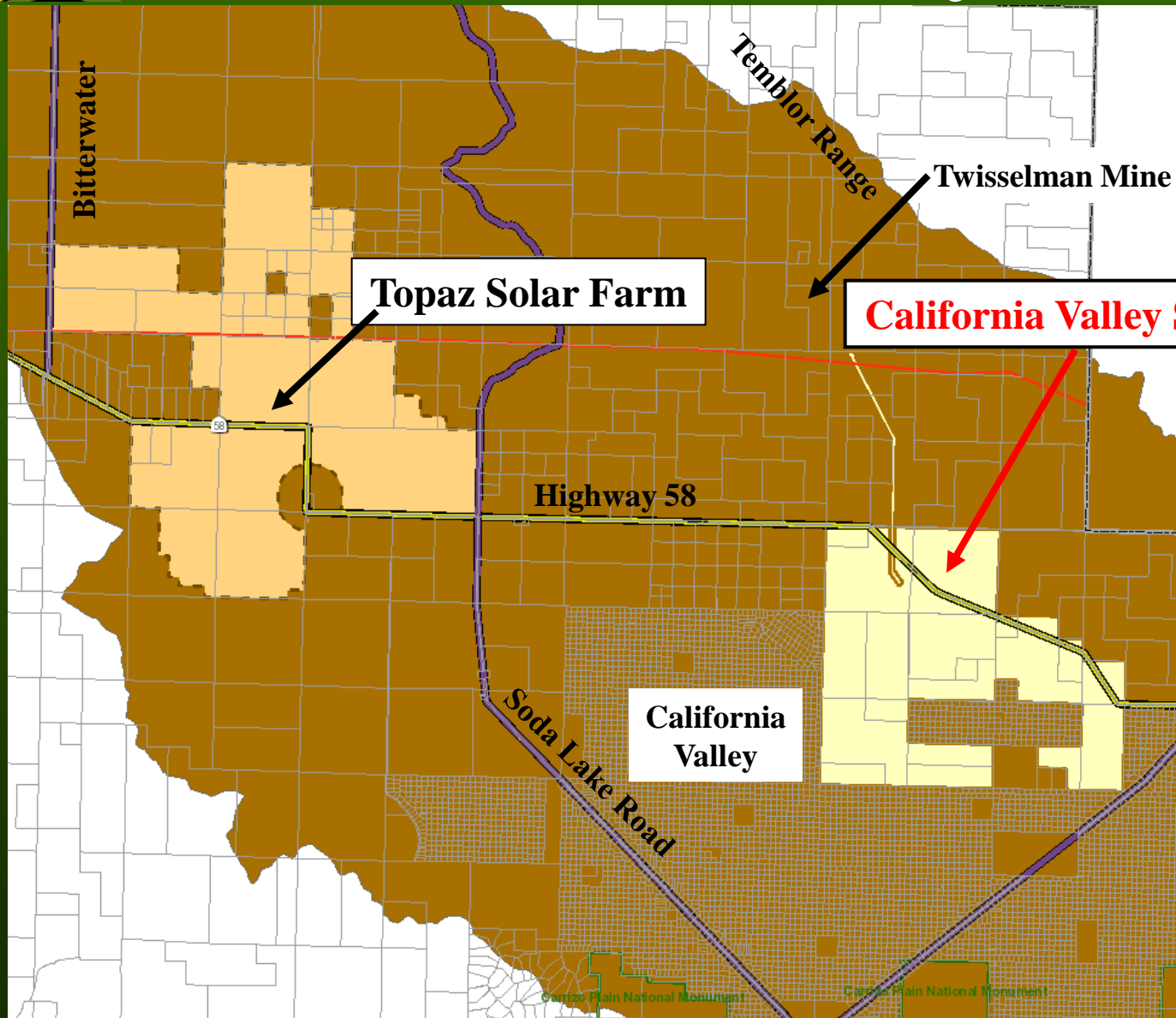


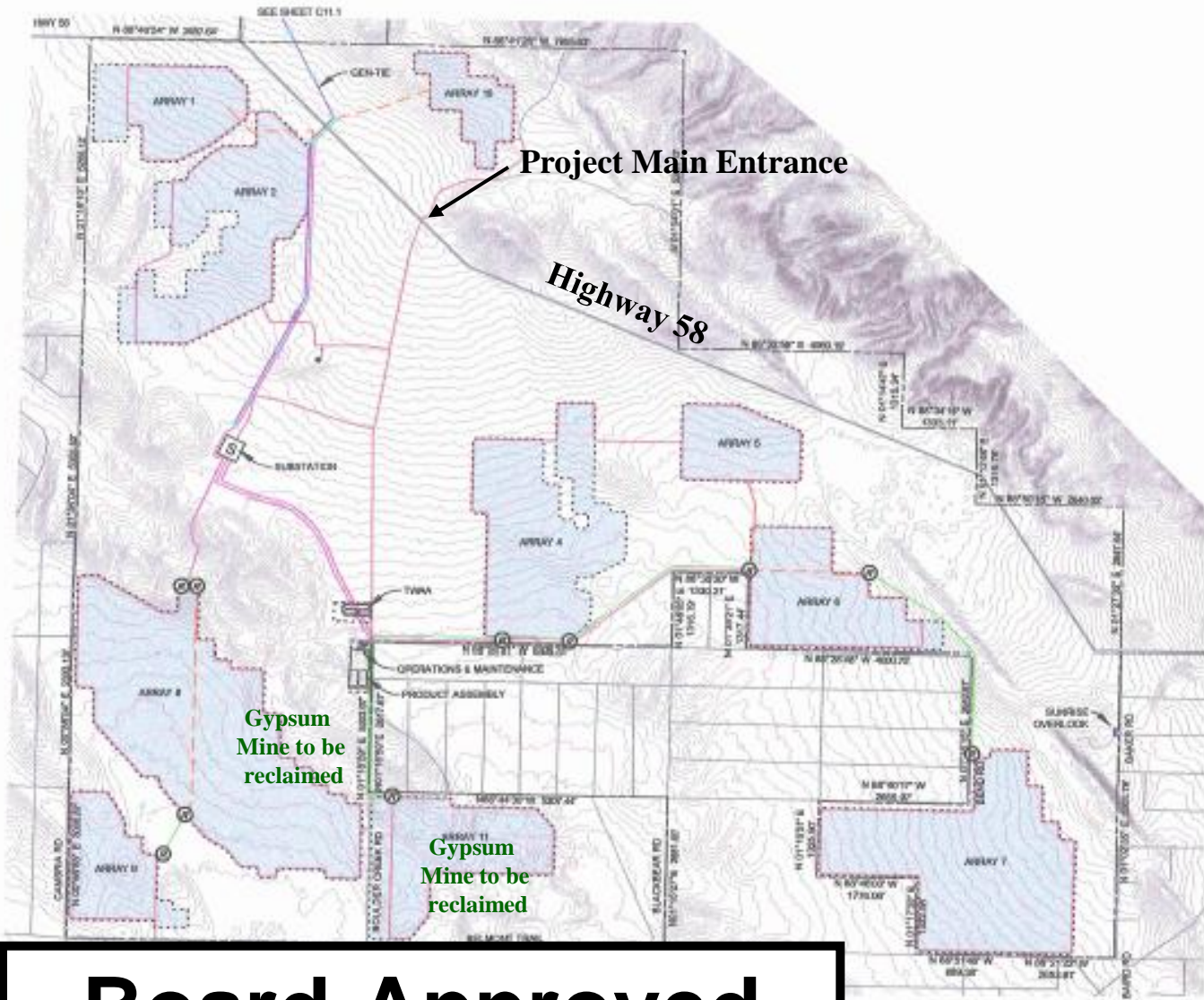


DEPARTMENT OF PLANNING AND BUILDING

Promoting the wise use of land Helping build great communities

Carrizo Plain – Solar Projects





- LEGEND**
- PROJECT PARCEL BOUNDARY
 - ARRAY BOUNDARY
 - FIRE ACCESS ROAD
 - 200 KV OVERHEAD GEN-TIE
 - 34.5 KV OVERHEAD LINES (SINGLE CIRCUIT) THROUGH (SHOWN SCHEMATICALLY FOR REFERENCE)
 - 34.5 KV OVERHEAD LINES (DOUBLE CIRCUIT) THROUGH (SHOWN SCHEMATICALLY FOR REFERENCE)
 - RIGID TO OHG LINES

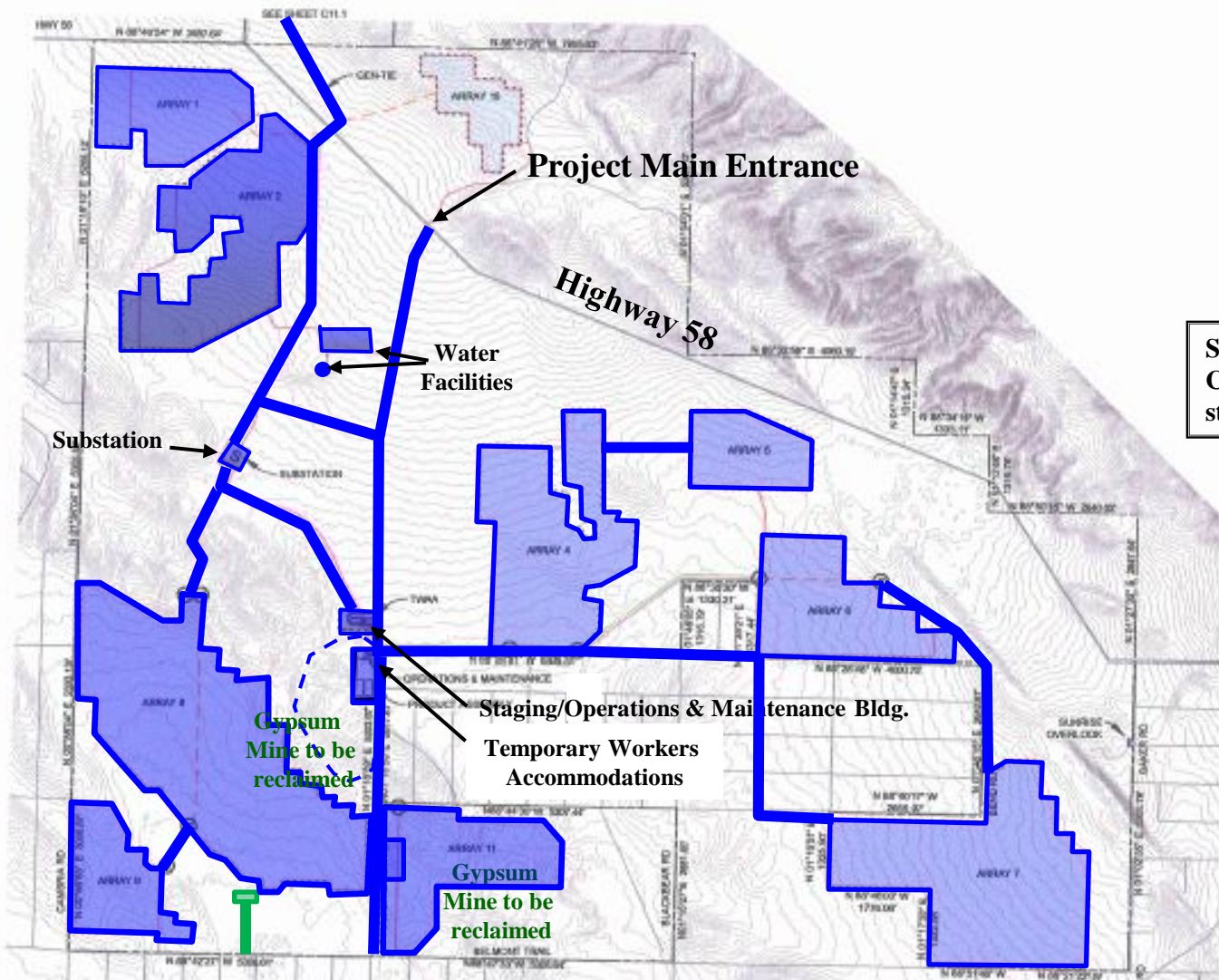
Project Main Entrance

Highway 58

Gypsum Mine to be reclaimed

Gypsum Mine to be reclaimed

Board-Approved Project (SunPower)



LEGEND

- PROJECT PARCEL BOUNDARY
- ARRAY BOUNDARY
- FIRE ACCESS ROADS
- 200 KV OVERHEAD GEN-TIE
- 34.5 KV OVERHEAD LINES (SINGLE CIRCUIT) THROUGH (SHOWN SCHEMATICALLY FOR REFERENCE)
- 34.5 KV OVERHEAD LINES (DOUBLE CIRCUIT) THROUGH (SHOWN SCHEMATICALLY FOR REFERENCE)
- ⊕ RIGGS TO OHG LINES

See [Ongoing Status Sheet](#) for specific Construction Permit #s and permitting status

Permit Issued/Pending Work Areas (Dark Blue)
Finalized/completed (Green)

