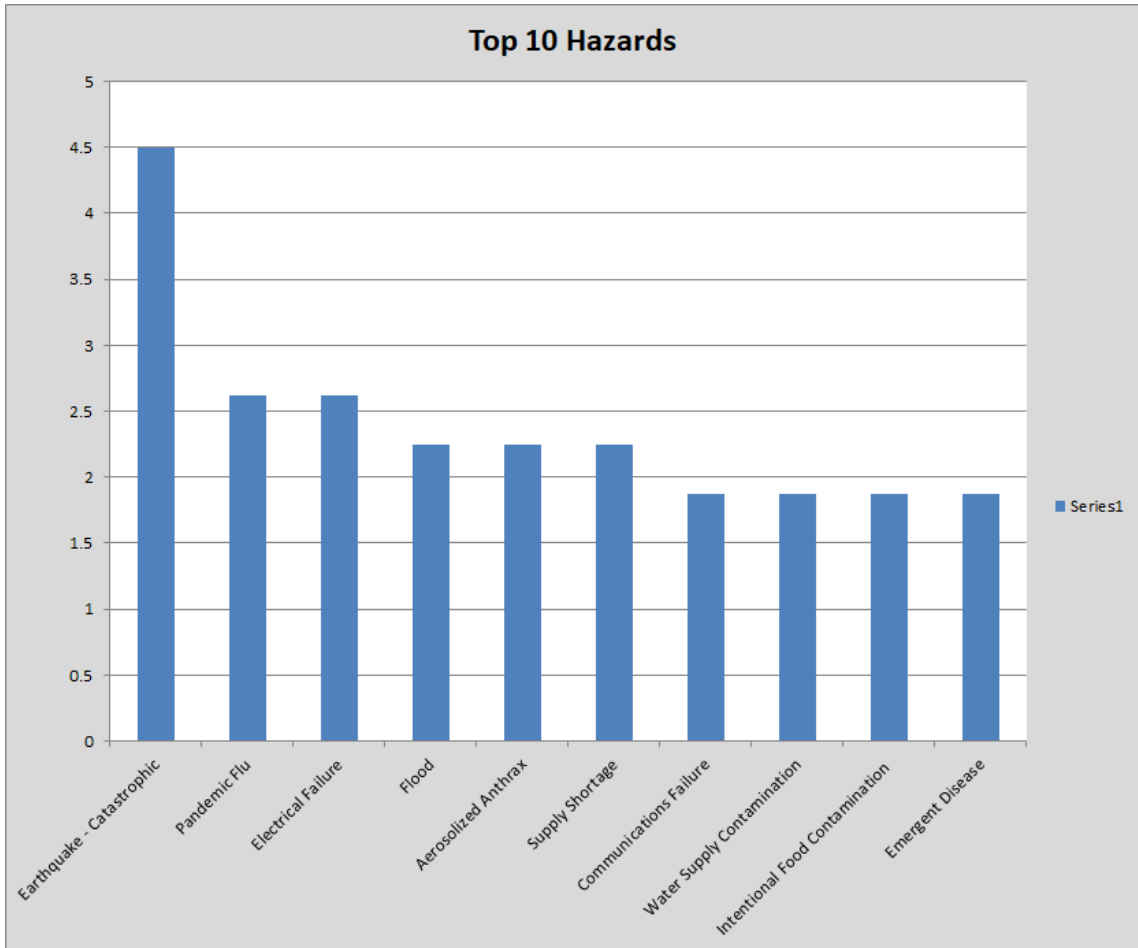


HEALTH HAZARD ASSESSMENT AND PRIORITIZATION SLO COUNTY 2019



At Risk Populations			
Are the following at-risk population categories at risk during the top hazards?			
At-Risk Population Description	Top Hazards		
	Earthquake	Pan Flu	Electrical Failure
Health vulnerabilities such as poor health status	Yes	Yes	Yes
Limited access to neighborhood health resources	Yes	Yes	Yes
Reduced ability to hear, speak, understand or remember	No	No	No
Reduced ability to move or walk independently or respond quickly to directions during an emergency	Yes	No	Yes
Health vulnerabilities that may be exacerbated by chemical, biological or radiological exposure	No	No	No

**Overall Ranking
2019**

Hazard	Risk Score	Rank
Earthquake - Catastrophic	4.5	1
Pandemic Flu	2.625	2
Electrical Failure	2.625	2
Flood	2.25	4
Aerosolized Anthrax	2.25	4
Supply Shortage	2.25	4
Communications Failure	1.875	7
Water Supply Contamination	1.875	7
Intentional Food Contamination	1.875	7
Emergent Disease	1.875	7
Severe Winter Storm	1.875	7
Nuclear Attack – 10 Kiloton Device	1.75	12
Pneumonic Plague	1.75	12
HazMat Incident –Transportation	1.6875	14
Wildfire	1.5	15
Earthquake - Moderate	1.5	15
Improvised Explosive Device	1.5	15
Fire - Largescale Urban	1.5	15
Landslide	1.5	15
Climate Change	1.5	15
Blister Agent	1.3125	21
Smallpox	1.3125	21
Information Systems Failure	1.3125	21
Water Contamination	1.25	24
Nerve Agent	1.25	24
Sewer Failure	1	26
Vectorborne	1	26
Natural Food Contamination	1	26
Transportation Failure	1	26
Cyber Attack	0.9375	30
Radiological Dispersal Device	0.75	31
Botulism	0.75	31
Mass Casualty HazMat Incident	0.75	31
Nuclear Facility Failure	0.75	31
Ricin	0.75	31
Drought	0.75	31
Storm Surge	0.75	31
Radiological Incident – Fixed Facility	0.5625	38
Water Supply Disruption	0.5	39
HazMat Incident – Fixed Facility	0.5	39
Coastal Erosion	0.5	39
Agroterrorism	0.5	39
Dam Failure	0.375	43

**Overall Ranking
2019**

Hazard	Risk Score	Rank
Extreme Summer Weather	0.375	43
Windstorm	0.375	43
Tularemia	0.3125	45
Thunderstorm & Lightning	0.25	46
Civil Disorder	0.25	46
Tsunami	0.25	46
Tornado	0.125	49
Expansive Soil	0.125	49
Hailstorm	0.0625	51
Land Subsidence	0	52
Small Casualty HazMat Incident	0	52
Levee Failure	-1.125	54