



**COUNTY OF SAN LUIS OBISPO HEALTH AGENCY  
PUBLIC HEALTH DEPARTMENT**

**Jeff Hamm** *Health Agency Director*

**Penny Borenstein, MD, MPH** *Health Officer/Public Health Director*

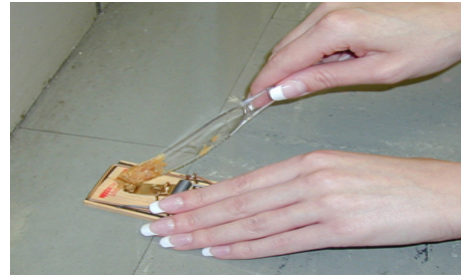
## PREVENT RODENT INFESTATIONS

### Traps

#### **Trap rodents around the home to help reduce the rodent population**

Choose an appropriate snap trap. Traps for catching mice are different from those for catching rats. Carefully read the instructions before setting the trap.

When setting the trap, place a small amount of peanut butter (approximately the size of a pea) on the bait pan of the snap trap.



Position the bait end of the trap next to the wall so it forms a "T" with the wall. Rodents prefer to run next to walls or other objects for safety and do not like being out in the open.



In attics, basements, and crawlspaces and other areas that do not have regular human traffic, set traps in any area where there is evidence of frequent rodent activity. Some rodents, particularly rats, are very cautious and several days may pass before they approach the traps. Other rodents, such as house mice and deer mice, are less cautious and may be trapped more quickly.

---

#### **Environmental Health Services**

2156 Sierra Way, Suite B | San Luis Obispo, CA 93401 | (P) 805-781-5544 | (F) 805-781-4211

[www.slopublichealth.org/ehs](http://www.slopublichealth.org/ehs)