

ARROYO GRANDE

CREEK CHANNEL

FLOODING & EVACUATION

Important Safety Information

*Importante Información De Seguridad
Sobre Inundaciones Y Evacuación Del
Canal De Arroyo Grande*



South Levee Breach
March 2001

Why do I need to be prepared for catastrophic flooding from Arroyo Grande Creek?

- Arroyo Grande Creek, through the community of Oceano, was channelized within levees constructed in 1961. Levees may reduce, but do not eliminate flooding.
- The levee is considered to be safe during smaller rainfall events. Vegetation and sediment are annually maintained within the creek to minimize flood risk. However, it is possible that the levee could fail during a large storm event and cause flooding of areas within one quarter mile of the creek; as indicated by the map on the reverse side of this brochure.
- When levees break or overtop, the flooding can be catastrophic. In 2001, the south levee breached and flooded hundreds of acres of crop-land and several residences.

During an event, prepare to evacuate or get to high ground immediately if you are in the flood zone. The map on the reverse side of this brochure indicates the approximate flood zone for a 100-year storm event.

What is the Plan?

1. The County of San Luis Obispo Flood Control and Water Conservation District maintains an automated flood warning system. This system provides real-time notification of developing flood, rainfall, and weather events throughout the county.
2. In the event of a potential levee failure and/or flooding, an Evacuation Order or Warning will be issued. Emergency officials may use route alerting, Reverse 911, or Early Warning System sirens to alert the affected areas. Residents and visitors may go to the Oceano Community Building at 1425 19th Street. This is a designated safe point where evacuees can wait until a shelter can be opened or the threat has diminished.

Drainage or flooding issues, contact San Luis Obispo County Public Works at (805) 781-5252

Don't Be Scared, Be Prepared!

Plan Ahead: Protect Your Life and Property

Use this map to identify if you live or work within the evacuation area. Pick a safe place on high ground where you and your family can meet and identify the route to there. Establish an out-of-area "family contact" in case you are separated.

If you have special needs or do not have transportation, make evacuation plans with neighbors now.

If you don't have a landline, register your cell phone for Reverse 911 at PrepareSLO.org/Reverse911.

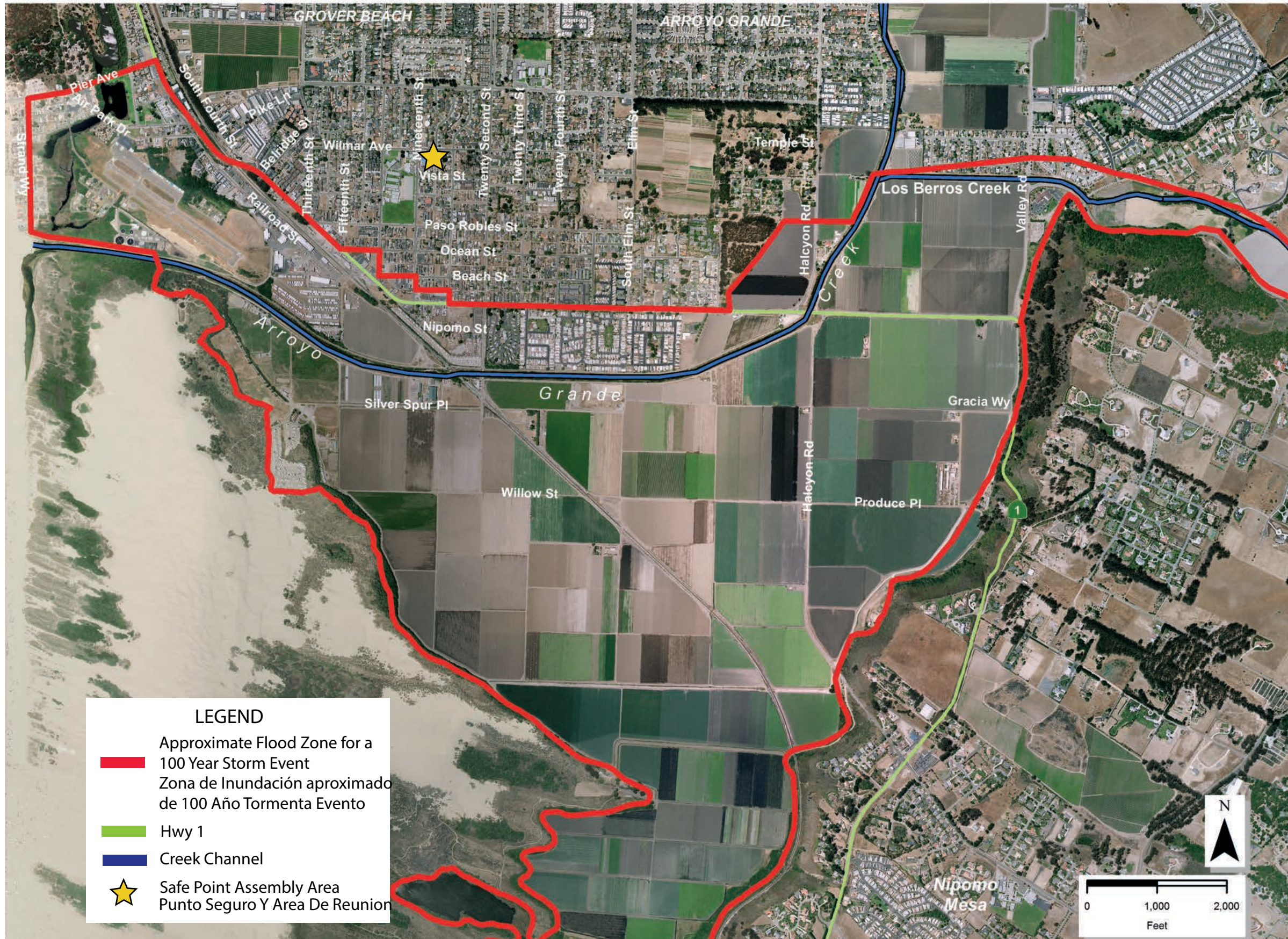
Keep important documents and priceless possessions within your home, as high as possible.

Make a plan to evacuate your pets.

Prepare an emergency kit that includes a flashlight, battery-operated radio, extra batteries, candles, matches, first-aid kit, medication, blankets, water and shelf-stable food.

Know how to shut off your gas at the meter and electricity at the fuse panel.

Keep sandbags, plywood, plastic sheeting, lumber and other emergency building materials handy for water-proofing.



IF AN EVACUATION WARNING OR ORDER IS ISSUED, REMEMBER THESE TIPS:

- Tune your radio/TV to any local station, such as 920 AM, 90.1 FM, or 98.1 FM, or KSBY.
- Always listen to authorities for emergency instructions.
- If directed, gather your family and pets and move to high ground immediately.
- If there is time, take your prepared emergency kit with you. When in doubt, leave all possessions behind. Your life is more important.
- Do not go into an attic to avoid the flood; you could get trapped.
- Never walk or drive through flooded areas; just 6 inches of water can make you fall, and can cause a car to stall.
- Stay away from power lines; electrocution is a frequent cause of death during flooding.
- Use common sense and try to stay calm.

Stay safe and you can help others!

SI UNA ORDEN O ADVERTENCIA DE EVACUACION ES DADA RECUERDE LOS SIGUIENTES CONSEJOS:

- Prenda su radio o televisor a cualquier estación local, como 920 AM, 90.1 FM o 98.1 FM, o KSBY.
- Siempre escuche a las autoridades para recibir instrucciones de emergencia.
- Si la instrucción es evacuar, váyase a una zona más alta inmediatamente.
- Si hay tiempo, llévese su estuche de emergencia preparado y documentos importantes. Si tiene duda, deje todas sus posesiones, porque su vida es más importante.
- No se meta a un ático para escapar de inundación porque puede quedar atrapado.
- Nunca camine o maneje a través de áreas inundadas; solo 6 pulgadas de profundidad en una inundación pueden hacerle caer o hacer que su carro se detenga.
- Manténgase alejado de los cables de electricidad o de corriente eléctrica; electrocución es una causa de muerte frecuente en casos de inundación.
- Use su sentido común y mantenga la calma.

¡Manténgase seguro y podrá ayudar a otros!



ARROYO GRANDE CREEK CHANNEL FLOOD EVACUATION AREA
OCEANO, CA

SAFE POINT ASSEMBLY AREA
PUNTO SEGURO Y AREA DE REUNION
Oceano Community Center
1425 19th Street
Oceano, California