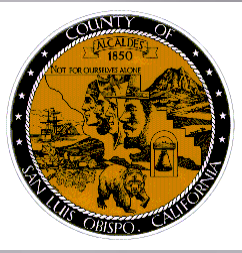


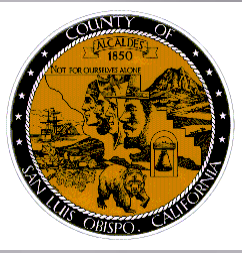
RESOURCE MANAGEMENT SYSTEM REVISIONS PACKAGE

Presented by the
County of San Luis Obispo Department
of Planning and Building
February 5, 2014



Resource Management System

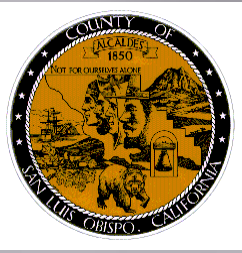
- ▣ What is the RMS?
- ▣ Introduction to the RMS
- ▣ Revisions
- ▣ Status and Next Steps



Resource Management System

What is the Resource Management System?

- 1) An information tool that focuses on collecting data in order to avoid and correct resource deficiencies in:
 - Water Supply
 - Sewage Disposal
 - Roads and Highway Interchanges
 - Schools
 - Air Quality
 - Parks

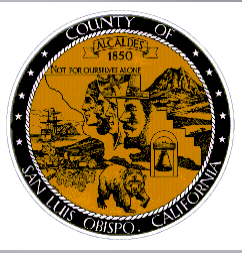


Resource Management System

RMS – How does it fit in?

General Plan, LUO, and RMS work together

- General Plan focuses development in specified communities and land use designations
- LUO sets minimum parcel size, density, other standards
- RMS intended to ensure services and resources available to support development



Resource Management System

Introduction to the RMS

- ▣ Responsible Agency
 - Department of Planning and Building, with input from:
 - County Departments
 - Cities
 - APCD
 - CSDs and other providers
 - WRAC
 - Caltrans
 - SLO COG

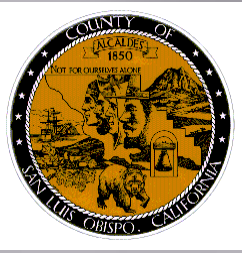


Resource Management System

Introduction to the RMS

▣ Level of Severity

- LOS I – resource use will reach capacity in time required to expand capacity
- LOS II – rate of resource depletion must be decreased to avoid exceeding the resource capacity
- LOS III – capacity of resource has been met or exceeded



Resource Management System

Introduction to the RMS

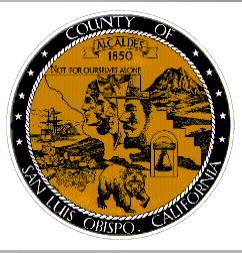
- ▣ Recommended Actions Examples
 - LOS I
 - Funding to address problem
 - Annexations address prior to approval
 - Impose conservation measures



Resource Management System

Introduction to the RMS

- ▣ Recommended Actions Examples
 - LOS II
 - Manage rate of resource depletion
 - Initiate financing mechanisms
 - Use RMS info to evaluate discretionary projects
 - Restrictions on land development
 - Adjustments to land use categories
 - Higher priority to planned areas with adequate resources, streets, infrastructure



Resource Management System

Introduction to the RMS

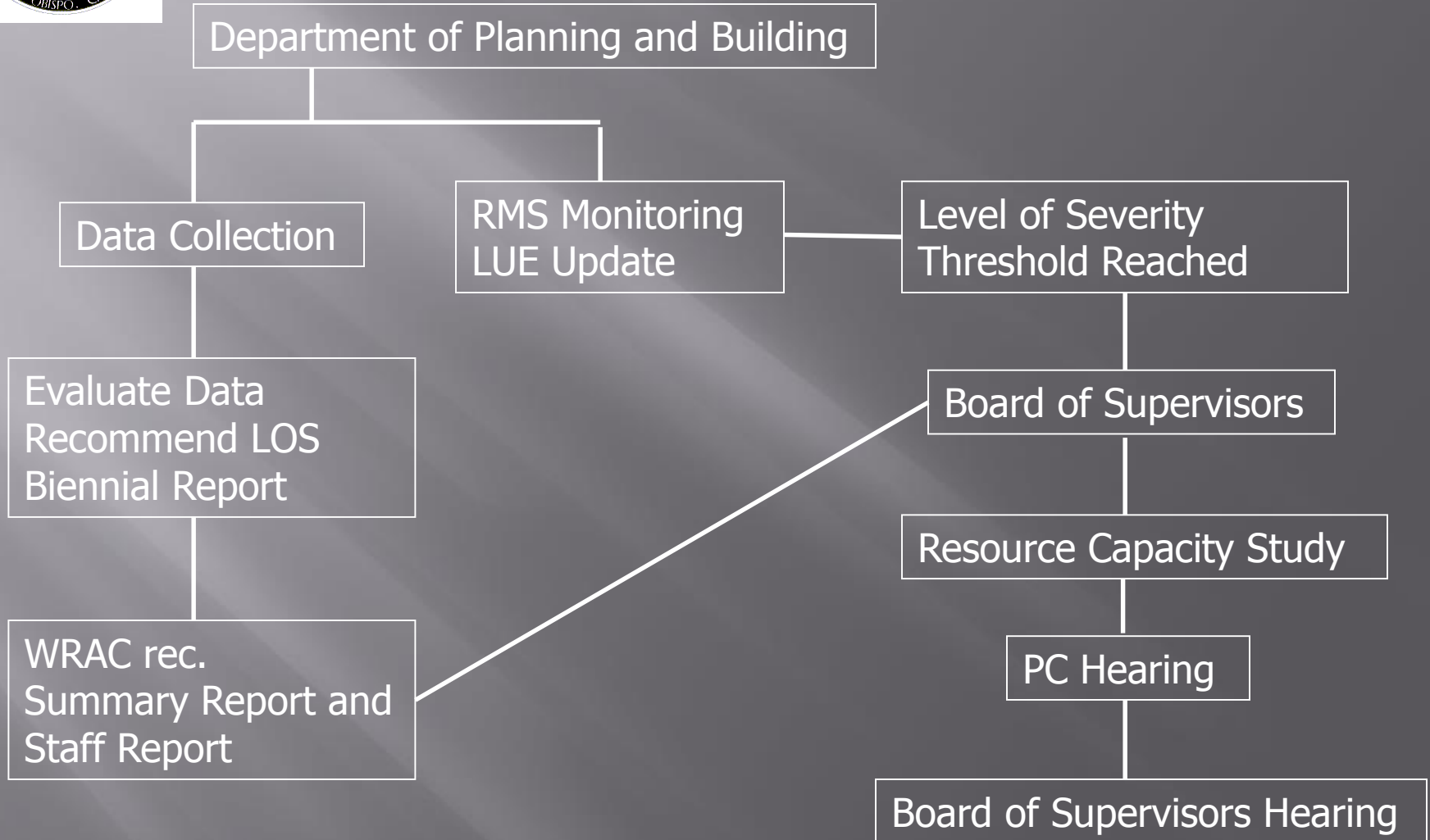
▣ Recommended Actions Examples

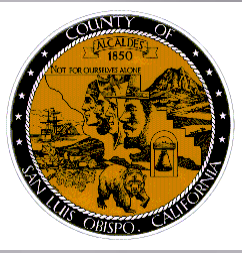
■ LOS III

- Measures to correct deficiency or restore LOS II so that severe restrictions unnecessary
- Growth management or urgency measures
- Moratorium



Resource Management System

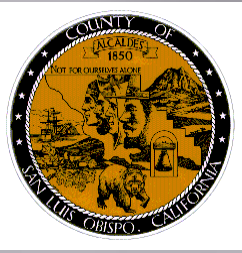




Resource Management System

Board of Supervisors Direction

- ❑ Recalculate lead times for responding to Levels of Severity in cooperation with the Public Works Department, community services districts and Caltrans.
- ❑ Institute mandatory actions to respond to Levels of Severity for all resources tracked by the RMS
- ❑ Include highway interchanges in the RMS .
- ❑ Create incentives for water conservation and cooperative ground water basin management



Resource Management System

Revisions

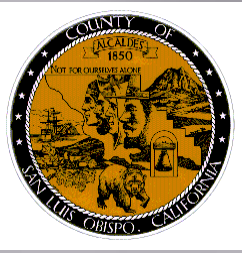
- ▣ Revised action requirements to align with what actions are appropriate and possible by the County.
 - More reporting from outside agencies that already track the stated thresholds (i.e., RWQCB for wastewater)
- ▣ Recalculation of lead times for responding
- ▣ Addition of Freeway Interchanges as a monitored resource
- ▣ Addition of Parks as a monitored resource



Resource Management System

Revisions

- ▣ Significant revisions to Water Resources section including COSE discussion
- ▣ Placing Level of Severity, Criteria, and Recommended Actions in table form
- ▣ Matching Inland and Coastal RMS
- ▣ Addition of photos and text boxes



Resource Management System

Status and Next Steps

- ❑ Public Review Draft released in December 2013.
- ❑ Planning Commission in March 2014.
- ❑ Board of Supervisors in April/May 2014.