

# Infrastructure Investments to Support the Local Economy



Together, Building  
a Better California

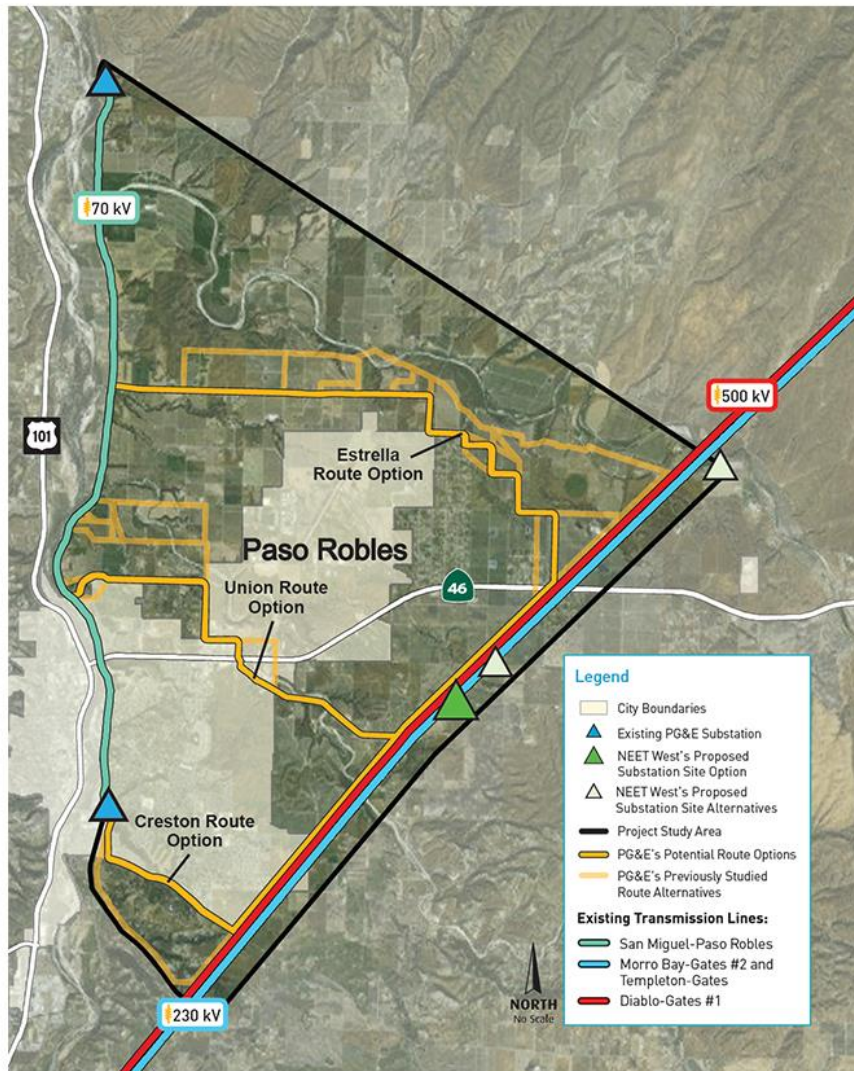
September 2016

# PG&E in the Central Coast Region

- Serves more than **450,000 residents** in San Luis Obispo, Santa Barbara and Monterey counties, with a make up of:
  - Latino: 42%
  - Asian: 4%
  - African American: 2%
  - American Indian/Alaska Native: 0.45%
- Employs more than **1,900 residents** in the local area
- Continues to be the **largest private employer** in San Luis Obispo County
- Supports more than **\$1 billion** in economic activity
- Hosts dozens of local public safety events and workshops



# Paso Robles Area Power Connect Update



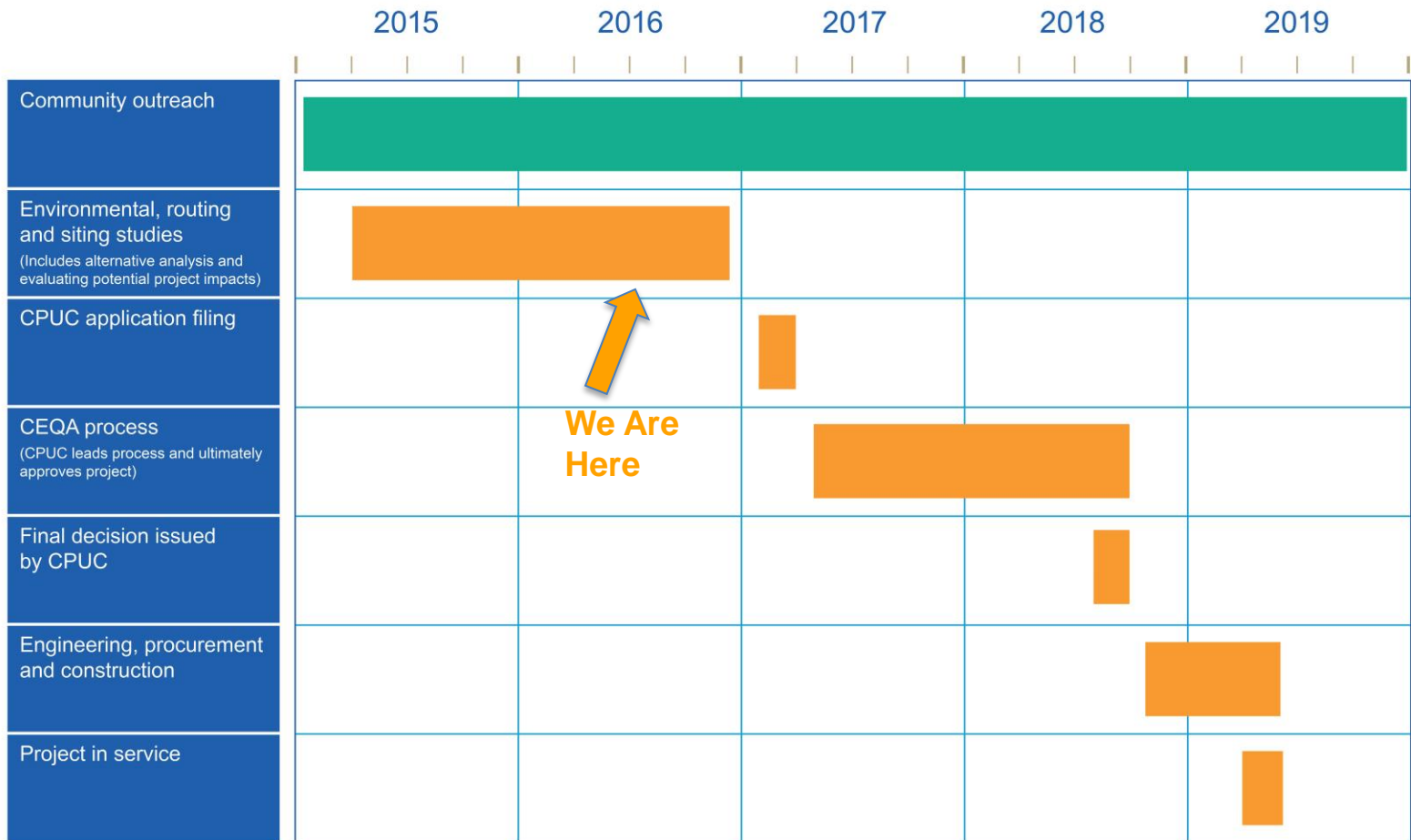
## NEET West - Estrella Substation

- Siting and building the proposed Estrella Substation

## PG&E - Paso Robles Area Power Connect

- Modifying the existing Morro Bay-Gates 230 kV transmission line to connect to the Estrella Substation
- Constructing a new 70 kV transmission line to connect the San Miguel-Paso Robles 70 kV transmission line to the Estrella Substation
- Upgrading a portion of the San Miguel-Paso Robles 70 kV transmission line
- Building additional components at the Estrella Substation site to connect the new substation to the new transmission line and local power grid
- Making reliability upgrades to our existing substations in the area

# Anticipated Project Timeline



\*An application for the project is scheduled to be submitted in early 2017 to the California Public Utilities Commission (CPUC), the state agency responsible for making a final decision on the project.

\*This timeline is specifically based on projections for PG&E project elements.

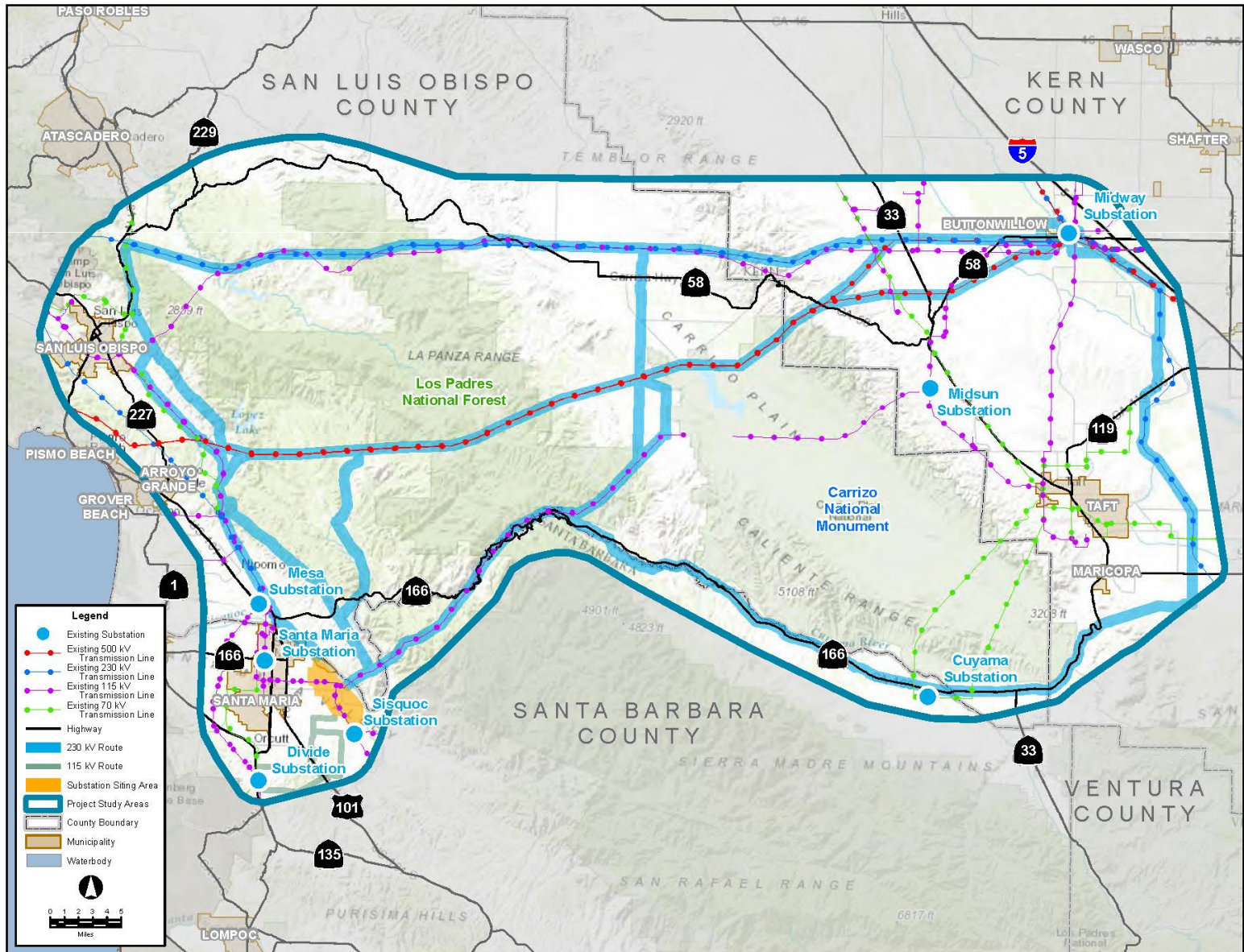


# Central California Power Connect

- Includes construction of a new substation to be located east of Santa Maria
- Proposed new substation to connect with:
  - ✓ a new 230kV transmission line to existing PG&E Midway Substation in Kern County
  - ✓ a new 115kV transmission line to existing PG&E Divide Substation (south of Santa Maria).
- The proposed project needed to prevent potential line overloads in the southern San Luis Obispo and northern Santa Barbara Counties.



# CCPC - Project Map



# CCPC - Project Benefits

- Will help prevent line overloads when outages occur on the area's other 230 kV lines
- Additional redundancy would have helped mitigate the June 23, 2013 outage caused by events affecting the Morro Bay Substation
- Improves PG&E's ability to meet the energy needs of the Central Coast region's 73,000 customers
- Enhances the economic vitality of Central Coast communities



# Anticipated Project Timeline



\*This timeline is specifically based on projections for PG&E project elements.





# Thank You

## Your Feedback Matters

### Paso Robles Area PC

[pge.com/pasoroblesareapc](http://pge.com/pasoroblesareapc)  
[pasoroblesareapc@pge.com](mailto:pasoroblesareapc@pge.com)  
1-888-743-8570

### Central California PC

[pge.com/centralcaliforniapc](http://pge.com/centralcaliforniapc)  
[centralcaliforniapc@pge.com](mailto:centralcaliforniapc@pge.com)  
1-855-831-5853



Together, Building  
a Better California