



Sustainable Groundwater Management Act (SGMA)

October 18, 2017
Paso Basin Cooperative Committee

Angela Ruberto, Water Resources Engineer

www.slocounty.ca.gov

SGMA: The Basics

In all High and Medium Priority Basins...



Mitigate and Prevent “undesirable results”

“Significant” & “Unreasonable”

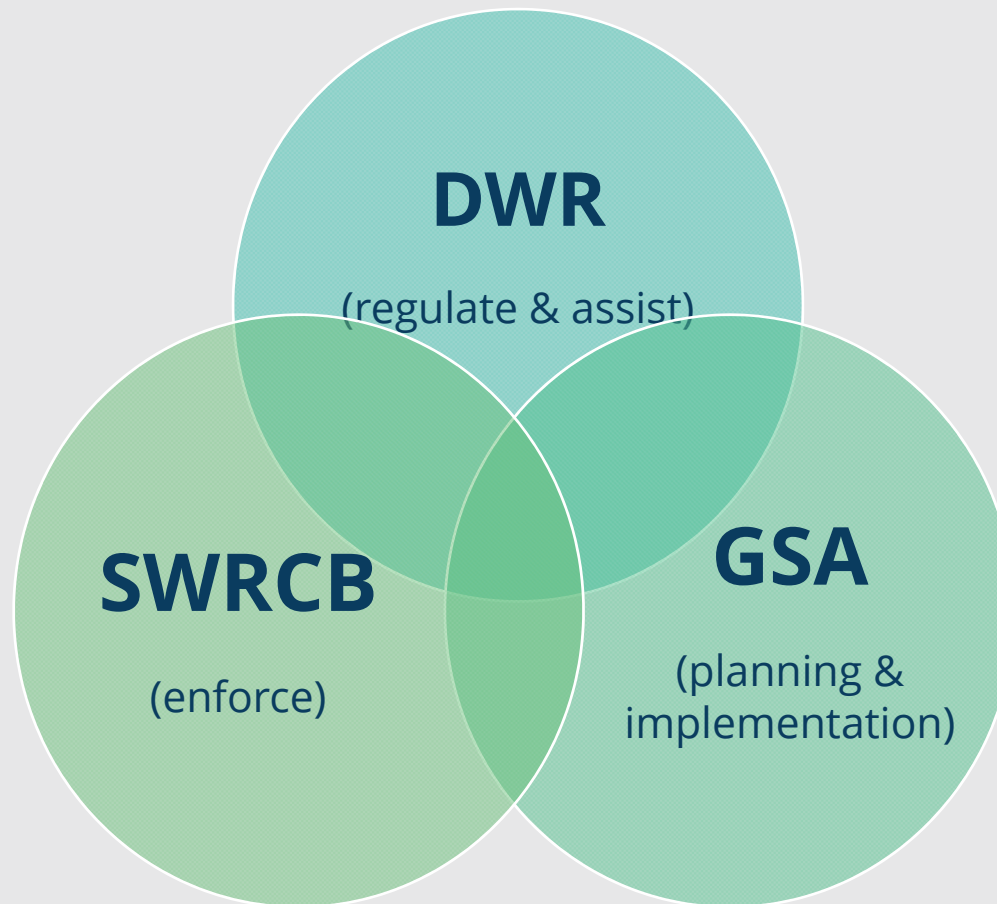
- Lowering of Ground-water Levels
- Reduction in Ground-water in Storage
- Seawater Intrusion
- Water Quality Degradation
- Land Subsidence
- Depletions of Surface Water



SGMA Key Deadlines



General Roles & Responsibilities



General Roles & Responsibilities

GSA must consider the interest of **all beneficial uses and users** of groundwater, including:



Phase I - Governance

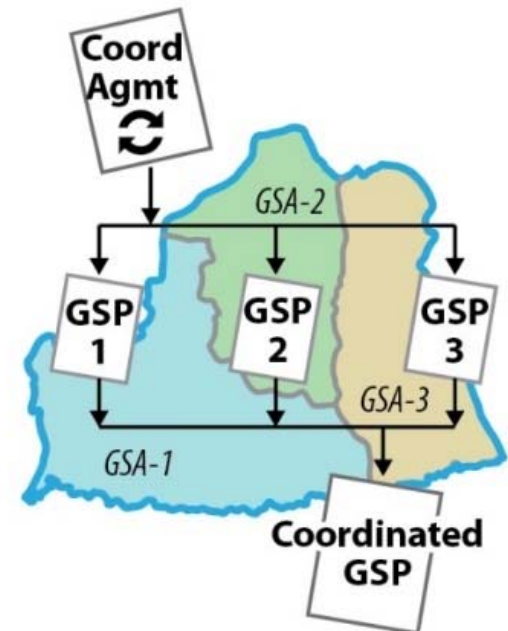
One GSA, One GSP



Multiple GSAs, One GSP with single Coordination Agreement

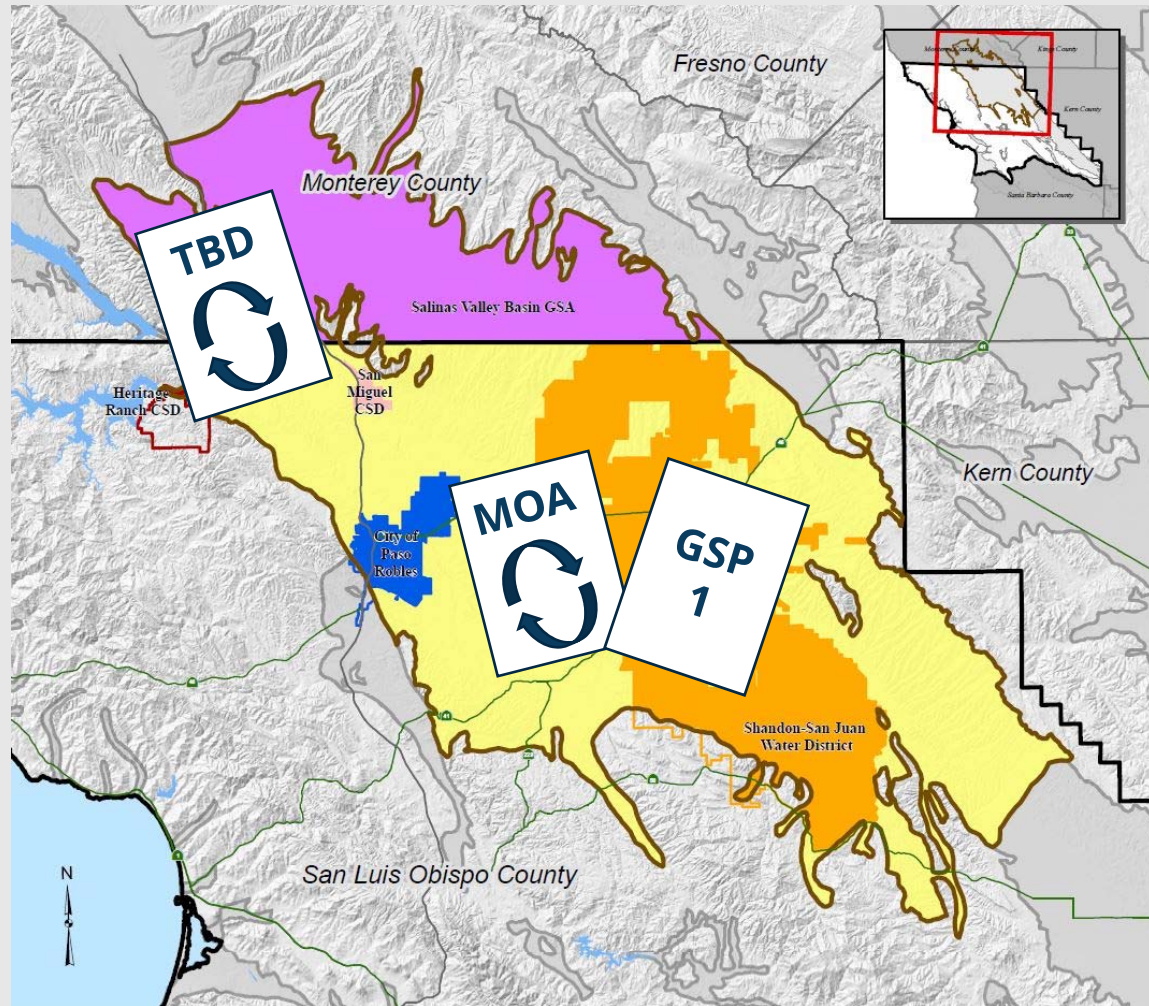


Multiple GSAs, Multiple GSPs with single Coordination Agreement

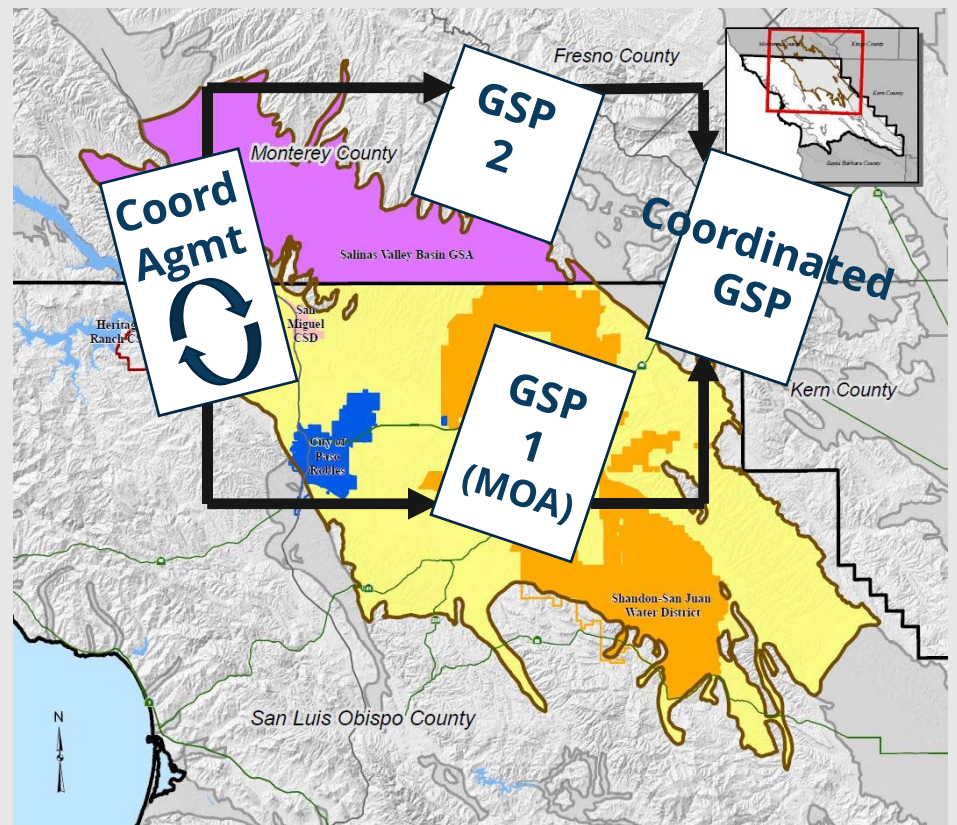
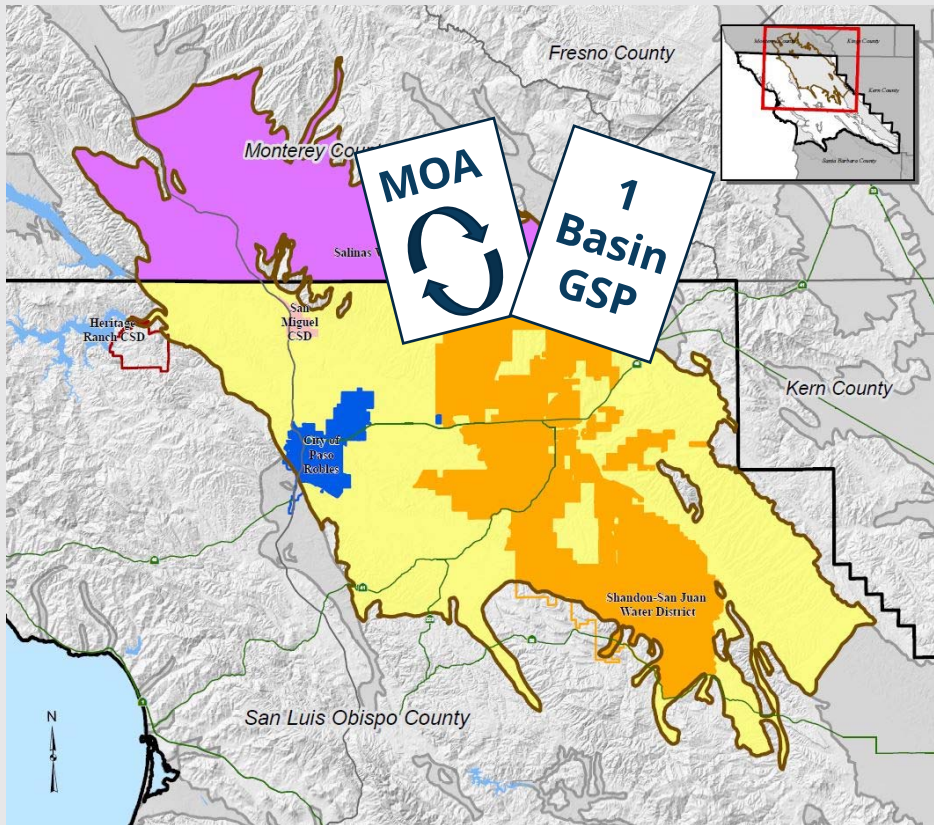


Paso Basin GSAs

-  City of Paso Robles GSA Coverage Area
-  Heritage Ranch CSD GSA Coverage Area
-  Paso Basin – County of San Luis Obispo GSA Coverage Area
-  Salinas Valley Basin GSA- Monterey County Coverage Area
-  San Miguel CSD GSA Service Area
-  Shandon-San Juan Water District GSA Coverage Area



Paso Basin GSAs



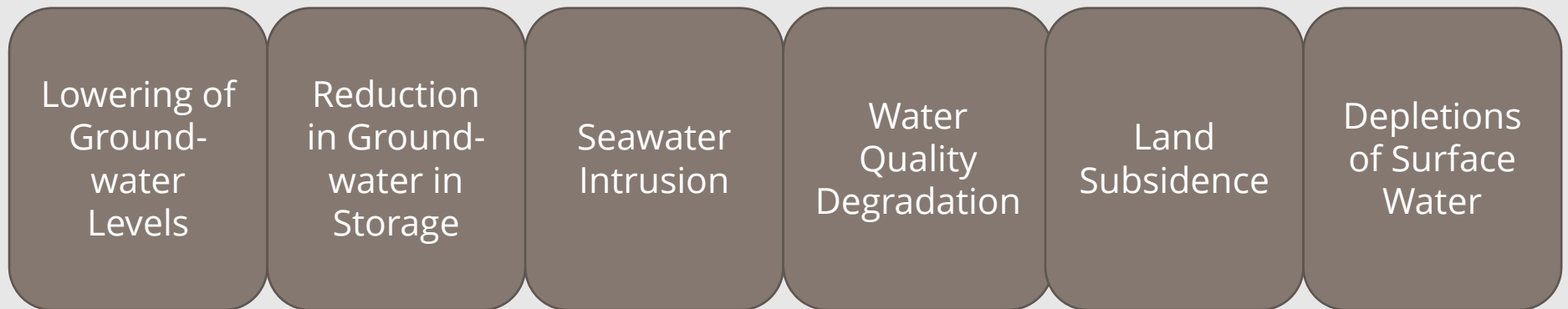
COUNTY OF SAN LUIS OBISPO

www.slocounty.ca.gov

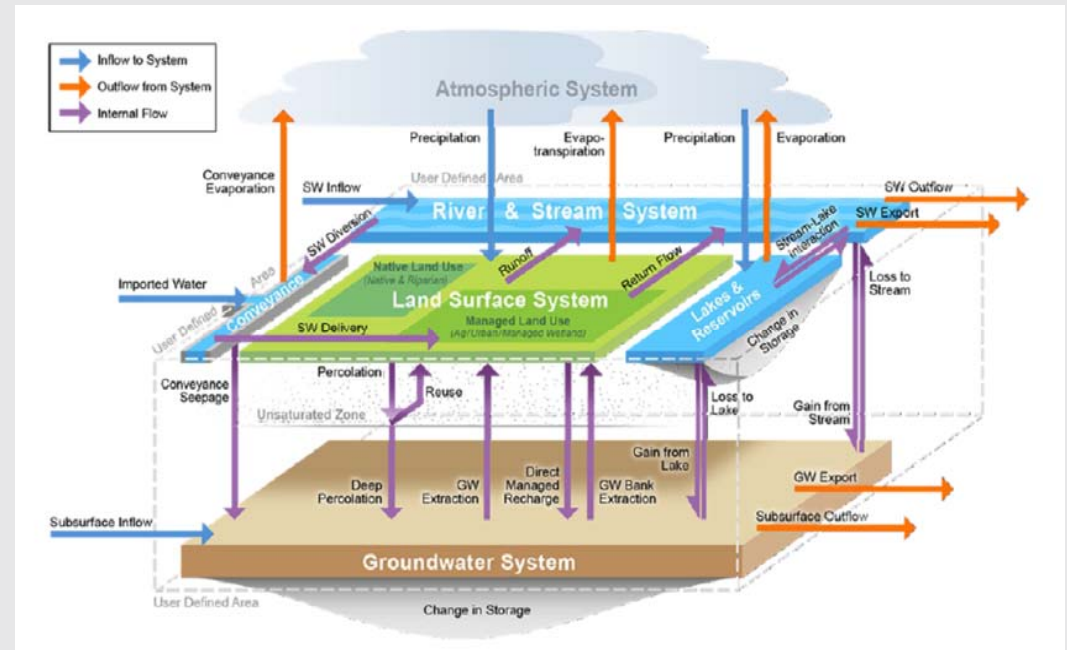
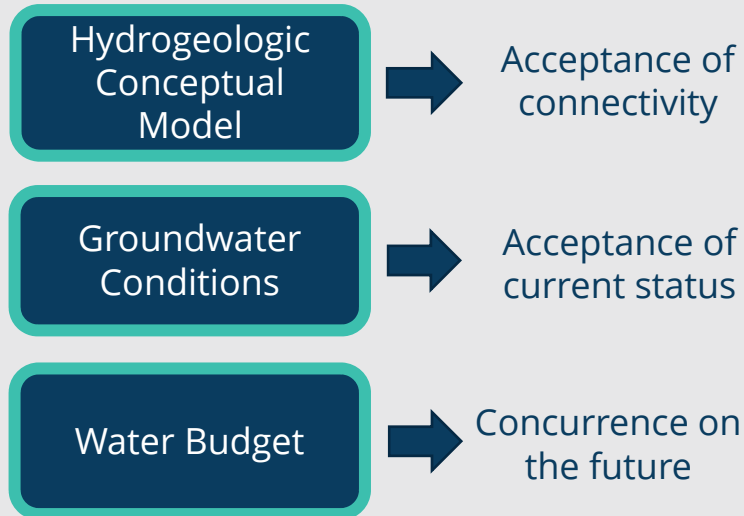
Phase II - Sustainability Planning



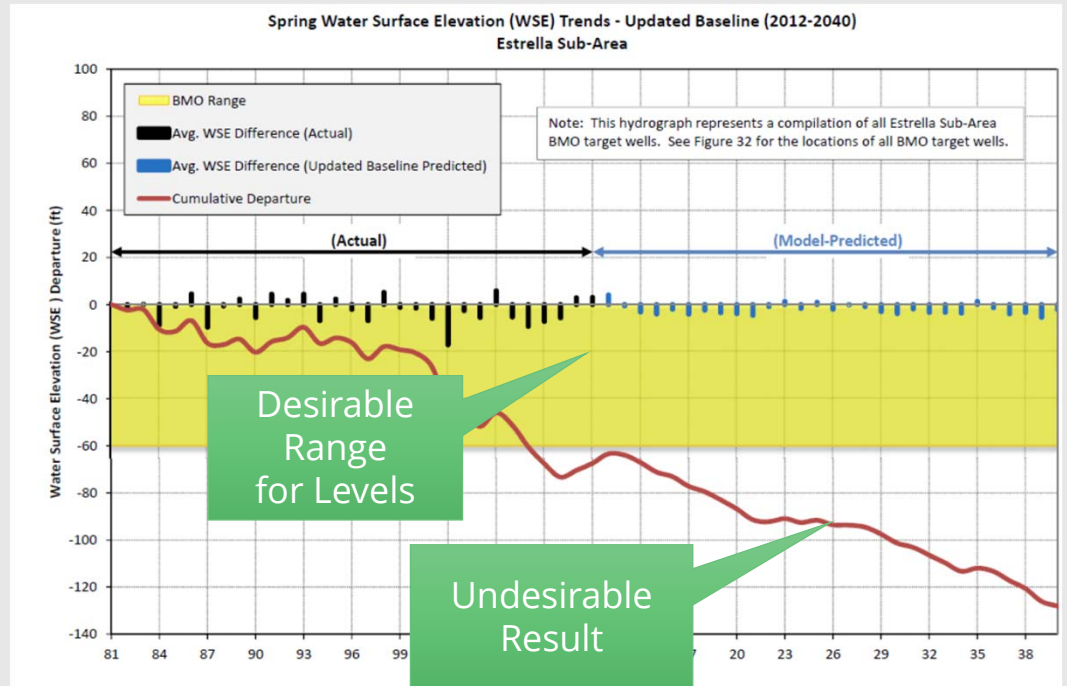
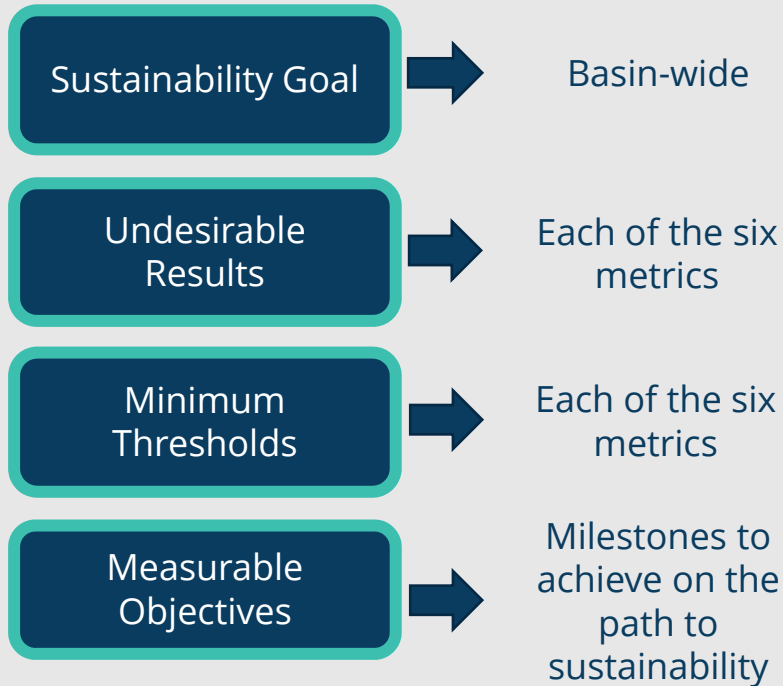
Mitigate and Prevent “undesirable results”
“Significant” & “Unreasonable”



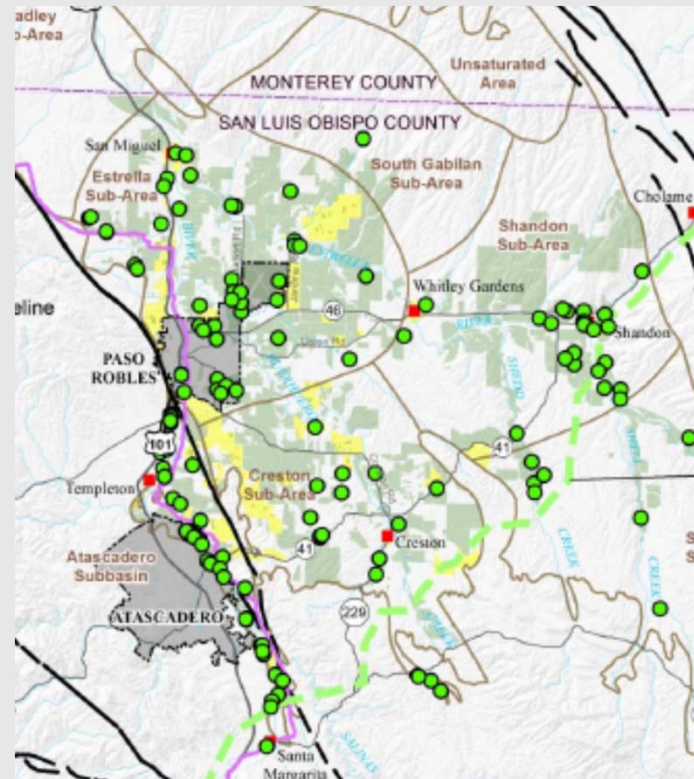
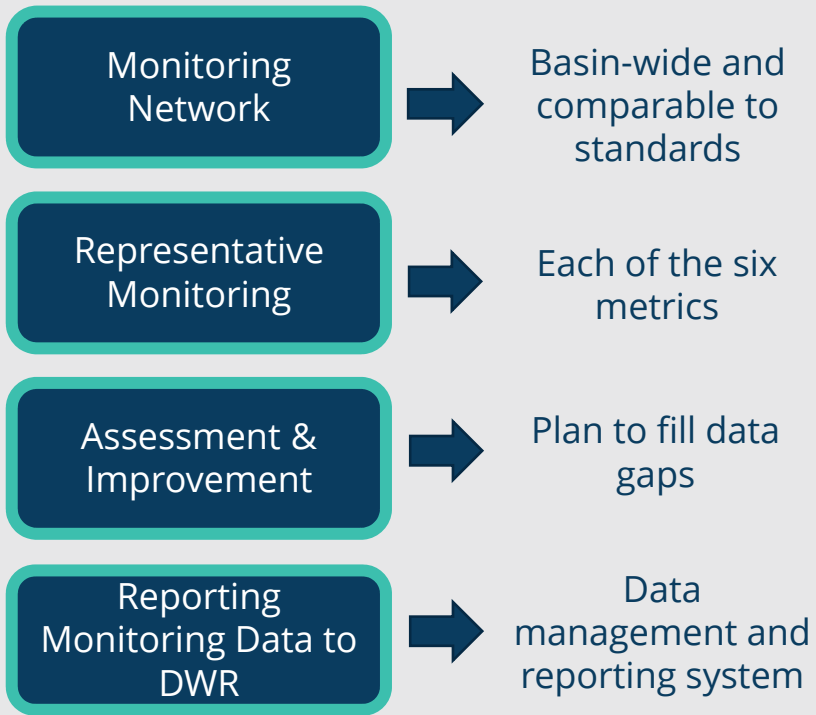
Coordinating on the Basin Setting



Deciding on Sustainable Management Criteria



Establishing a Common Data Network



Deciding what Actions to Take

Management Areas

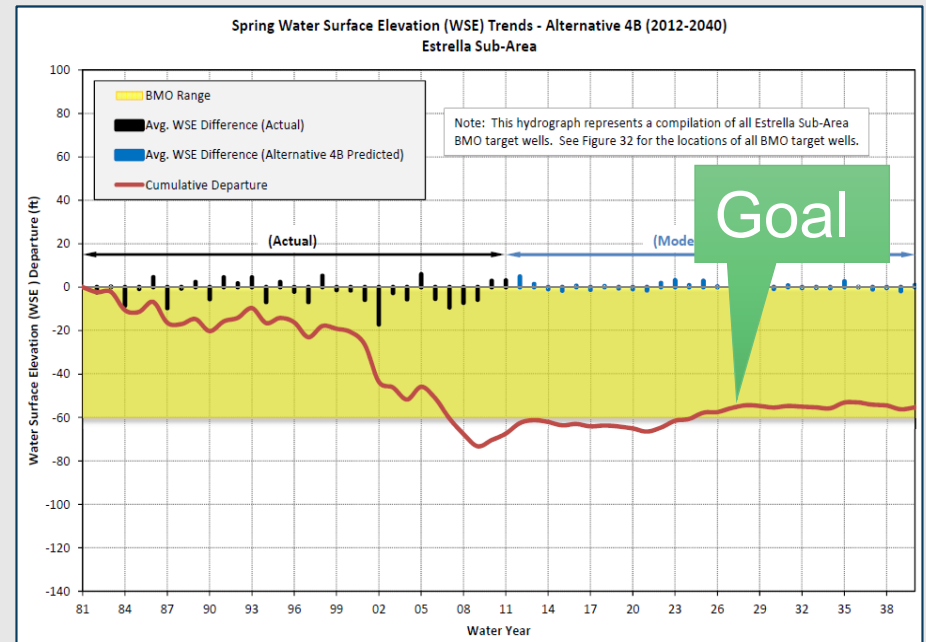


Balancing effective management and autonomy

Projects & Management Actions

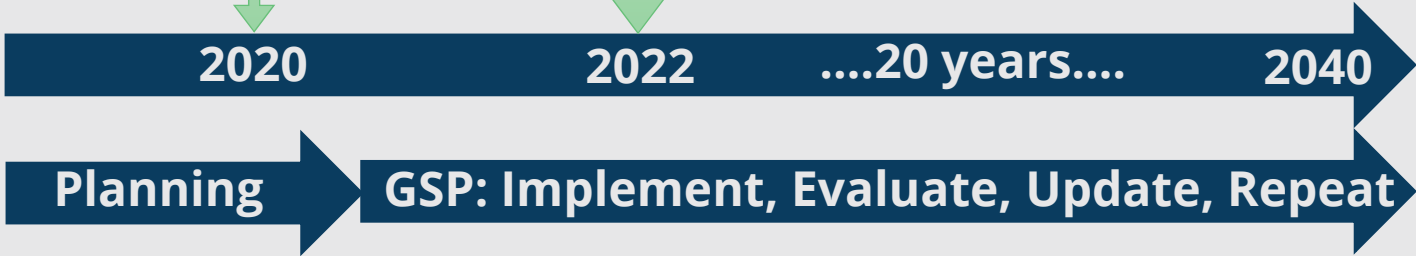
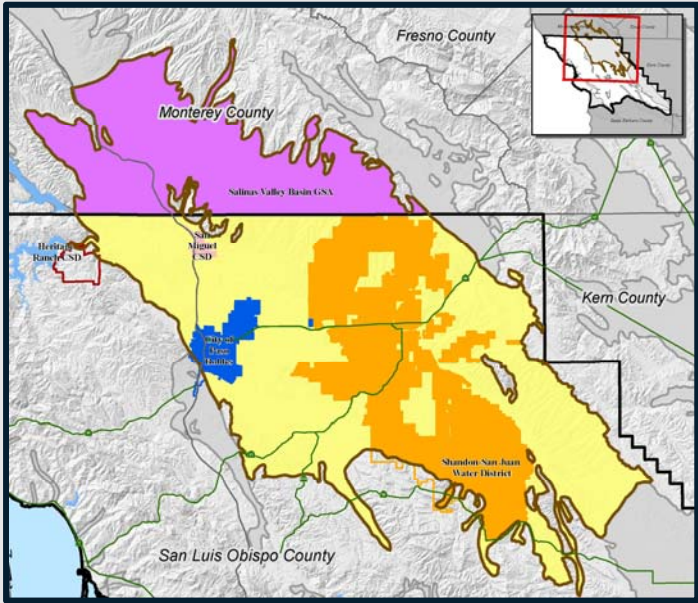


Demand Management
Supply Enhancement



Phase III – Implementation of GSP

Implement Plan & Adapt Management through Continued Collaboration



ACHIEVE SUSTAINABILITY!





Thank you!

For more information, join our email list:
www.slocountywater.org/sgma

www.slocounty.ca.gov