

San Luis Obispo County CARE COURT

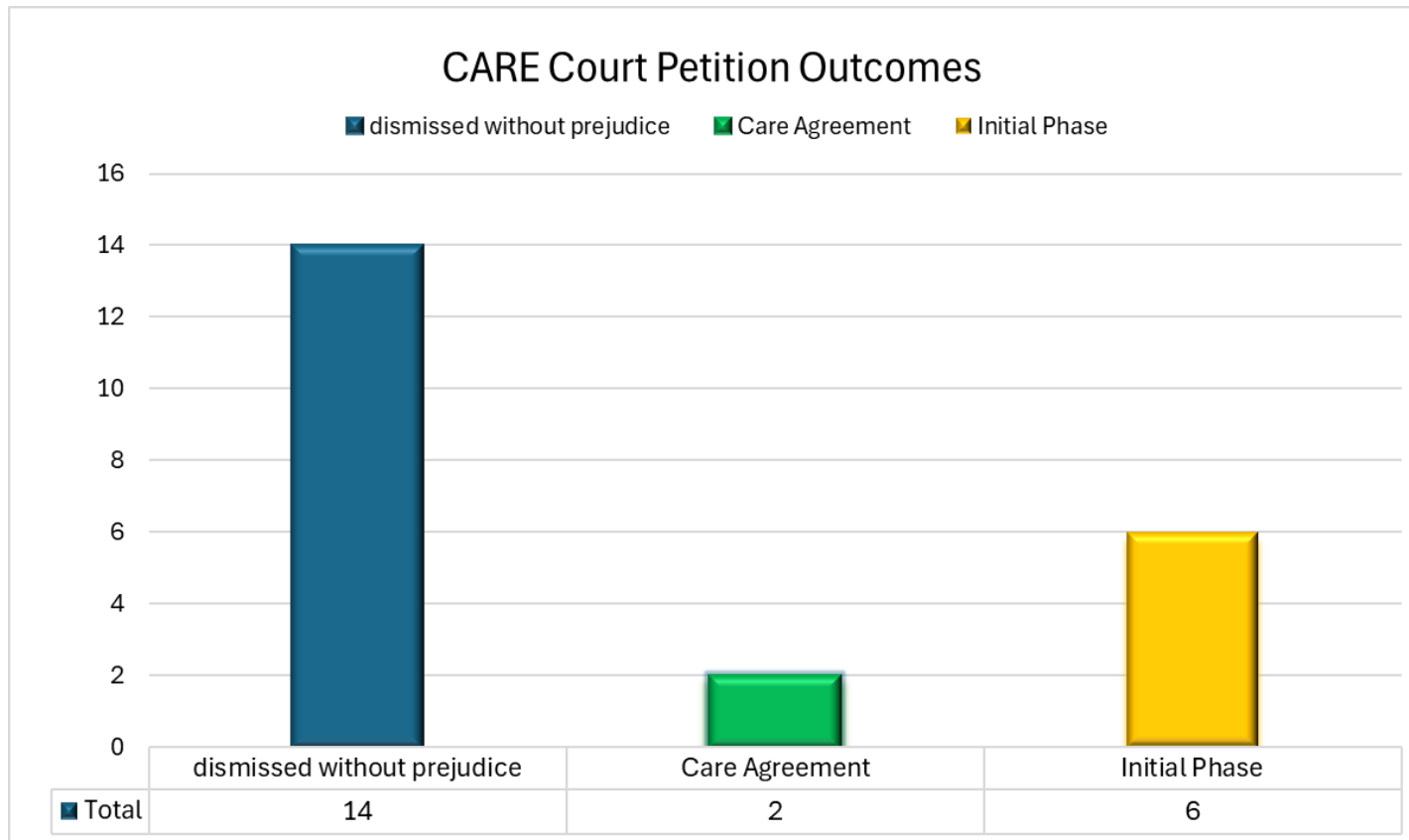
Community Assistance, Recovery, and Empowerment (C.A.R.E.) Court

Joshua Woodbury – Justice Services Division Manager

Katherine Leonard – Justice Services Supervisor

Allyson Woolley – Justice Services ASO II

Community Assistance, Recovery, and Empowerment (CARE) Court



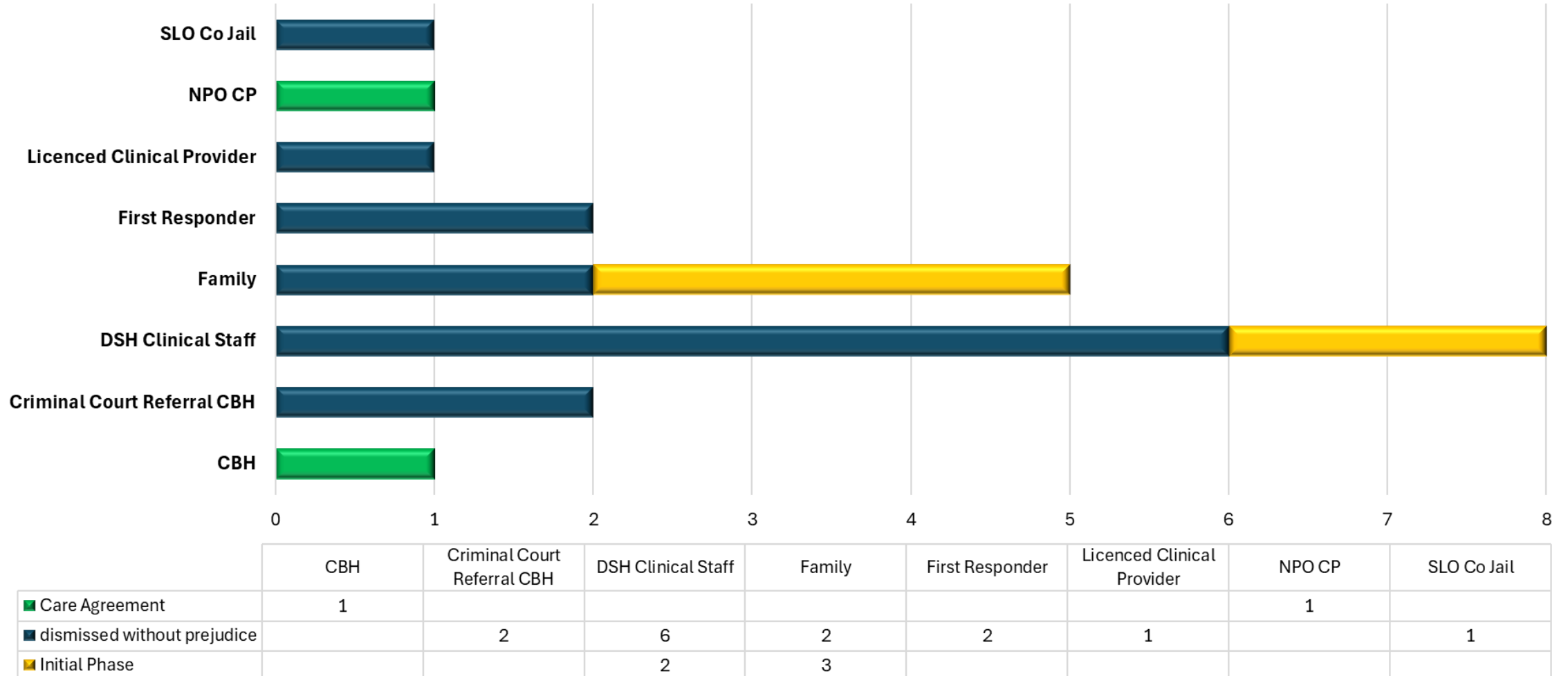
- A new CIVIL COURT PROCESS designed to link individuals who have **specific** mental health diagnoses to county behavioral health services, under the oversight of a judge, for up to 24 consecutive months.
- Meant as a Civil diversion process that could be a step down from conservatorship or alternative to incarceration.
- CARE Court:
 - Is NOT criminal court
 - Does NOT include persons with any/all mental health conditions
 - Is NOT a solution for homelessness
 - No Forced Medication
- Current Progress:
 - **22** petitions since Dec 1, 2024

Eligibility Requirements

- Adults, ages 18 and older.
- Have a severe mental illness AND are diagnosed with schizophrenia spectrum or other psychotic disorder as a PRIMARY diagnosis.
- Not clinically stable with ongoing voluntary outpatient treatment.
- Are either:
 - Unlikely to survive safely in community without supervision and their condition is substantially deteriorating OR
 - Need services and supports to prevent a relapse or deterioration that would likely result in grave disability or serious harm to the person or others (5150)
- CARE Court is the least restrictive option to ensure recovery and stability AND the person will likely benefit from participation

Petition Types

Count of Petitioner by Type of Petitioner and CARE Status



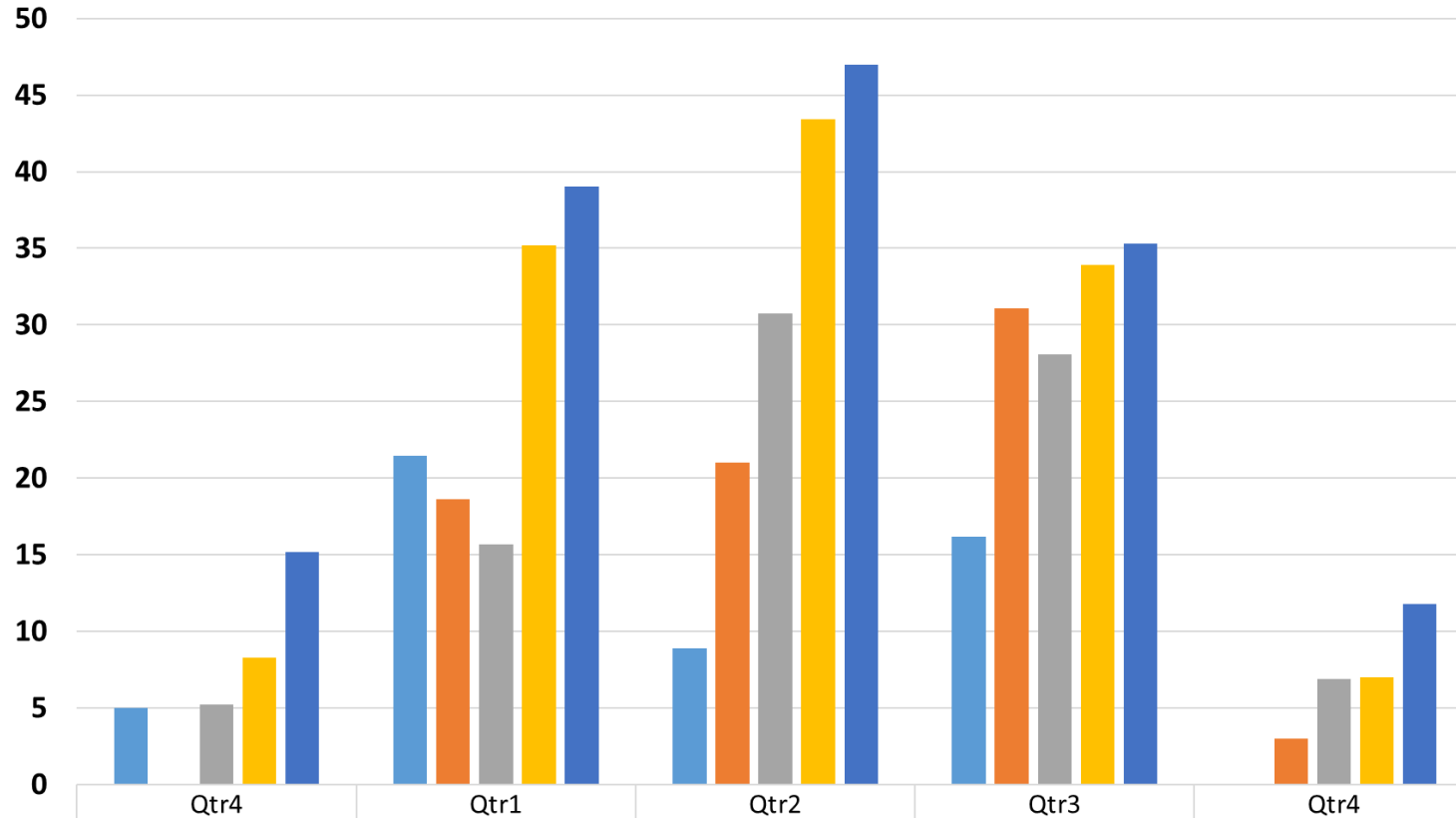
CARE Process Initiation

- A case is initiated when a person petitions the court to determine a respondent's eligibility and begin CARE proceedings.
- Respondent (self-referral)
- Behavioral Health Agency, Adult Protective Services, Public Guardian/Conservator
- First Responders
- Family member (e.g., spouse, child, etc.), adult who lives with respondent
- Hospital Director, Director of Institution where individual lives
- Director of Organization providing Outpatient Services
- Tribal Courts / Indian Health Services



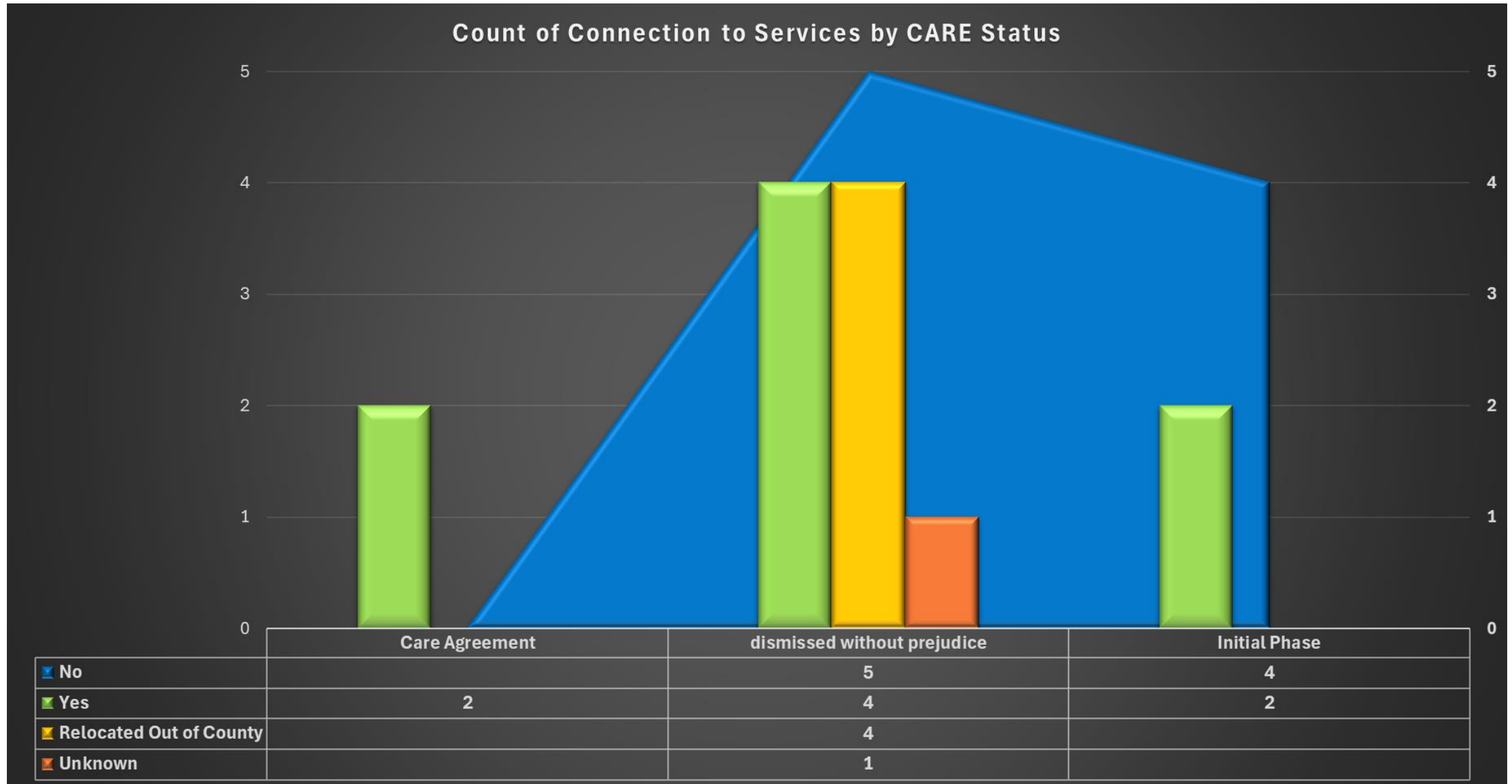
Staff Time Spent on CARE Activities

Total Hours by Quarter/ Calendar Year/ CARE Activity

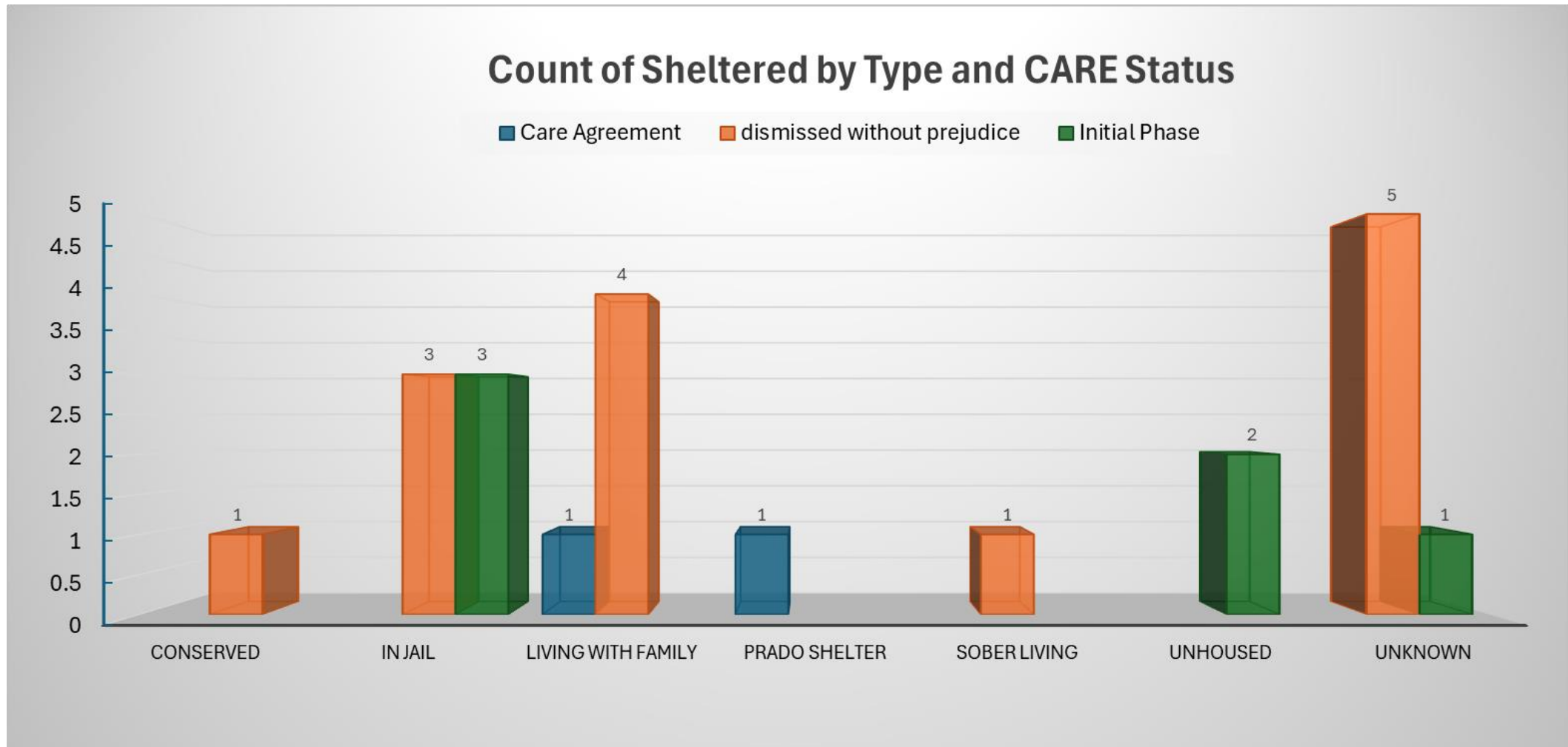


CARE Data	5	21.45	8.88	16.2	
CARE Hearings		18.6	21.02	31.1	3
CARE Notice	5.2	15.65	30.77	28.1	6.9
CARE Outreach and Engagement	8.3	35.22	43.4	33.9	7
CARE Reports	15.2	39.05	47	35.3	11.8

Service Connections



Housing Status



Contacts & Resources

**Justice Services Division Manager,
San Luis Obispo**

Josh Woodbury, LMFT

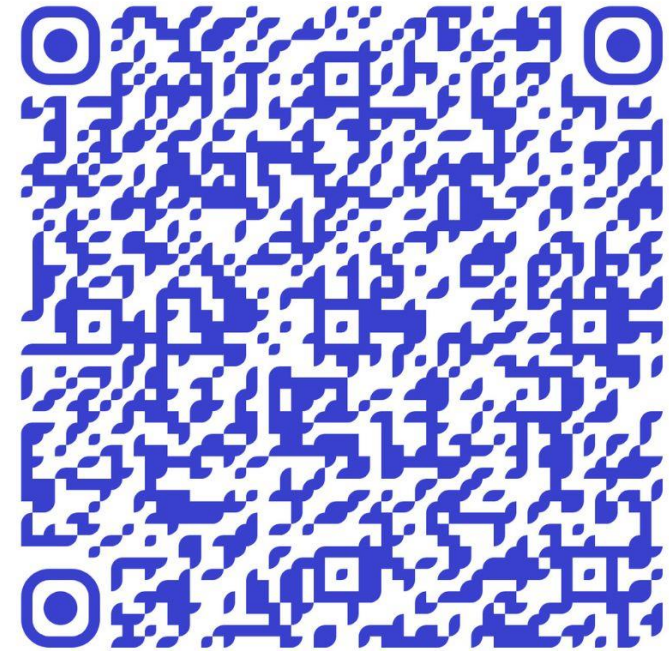
jwoodbury@co.slo.ca.us

**Justice Services Program Supervisor,
San Luis Obispo**

Katherine Leonard, LMFT

kleonard@co.slo.ca.us

SCAN & LEARN



CARE COURT

Or

Visit [Care-Act.org](https://care-act.org)

