
INTRO & OVERVIEW: RESTORATIVE PARTNERS





RESTORATIVE PARTNERS

OUR MISSION:

Transform lives impacted by crime
through healing services and
relationships.



Restorative Partners Volunteer Program Vision Statement



At Restorative Partners, we believe that every person deserves to be treated with dignity and respect.

We strive to provide intentional, inclusive, and trauma-informed services and programs.

We acknowledge that Restorative Partners is situated on the ancestral, traditional, and contemporary lands of the yak tityu tityu yak tiłhini, Northern Chumash tribe. We honor the tribe's connection to these territories and respect the land on which we live and work.

We will continue to center the voices of the most vulnerable and most marginalized members of our community.

And we will continue to stand up and speak out against systems of oppression.



WHAT WE DO:

- RESTORATIVE PARTNERS PROVIDES...

...services and programs for those in-custody and for those released from the San Luis Obispo County Juvenile Hall and California State Prisons (CMC).



- OUR RESTORATIVE JUSTICE APPROACH...

...**focuses on mind, body and spiritual transformation, incorporates trauma-informed care, addresses responsibility & accountability, and offers accompaniment through reentry mentorship.**



- THE GOAL OF RESTORATIVE PARTNER'S WORK...

...is to reduce violence and lower recidivism (reoffending) by providing a continuum of care from incarceration through reincorporation into the community.



RESTORATIVE JUSTICE & PRACTICES: EXPLAINED



WHAT QUESTIONS DO WE ASK WHEN SOMETHING HAPPENS OR WHEN HARM IS DONE?

CRIMINAL JUSTICE SYSTEM:

- 1 What law has been broken?
- 2 Who did it?
- 3 What do they deserve?

RESTORATIVE JUSTICE:

- 1 Who was harmed?
- 2 What are their needs?
- 3 Whose obligations are these?



DEFINITIONS:

- RESTORATIVE JUSTICE:

A way of looking at criminal justice that focuses on repairing the harm done to people and relationships rather than just punishing those who cause harm. This does not mean that people who cause harm should not be held accountable, simply that the needs of those harmed should be centered in the conversation.

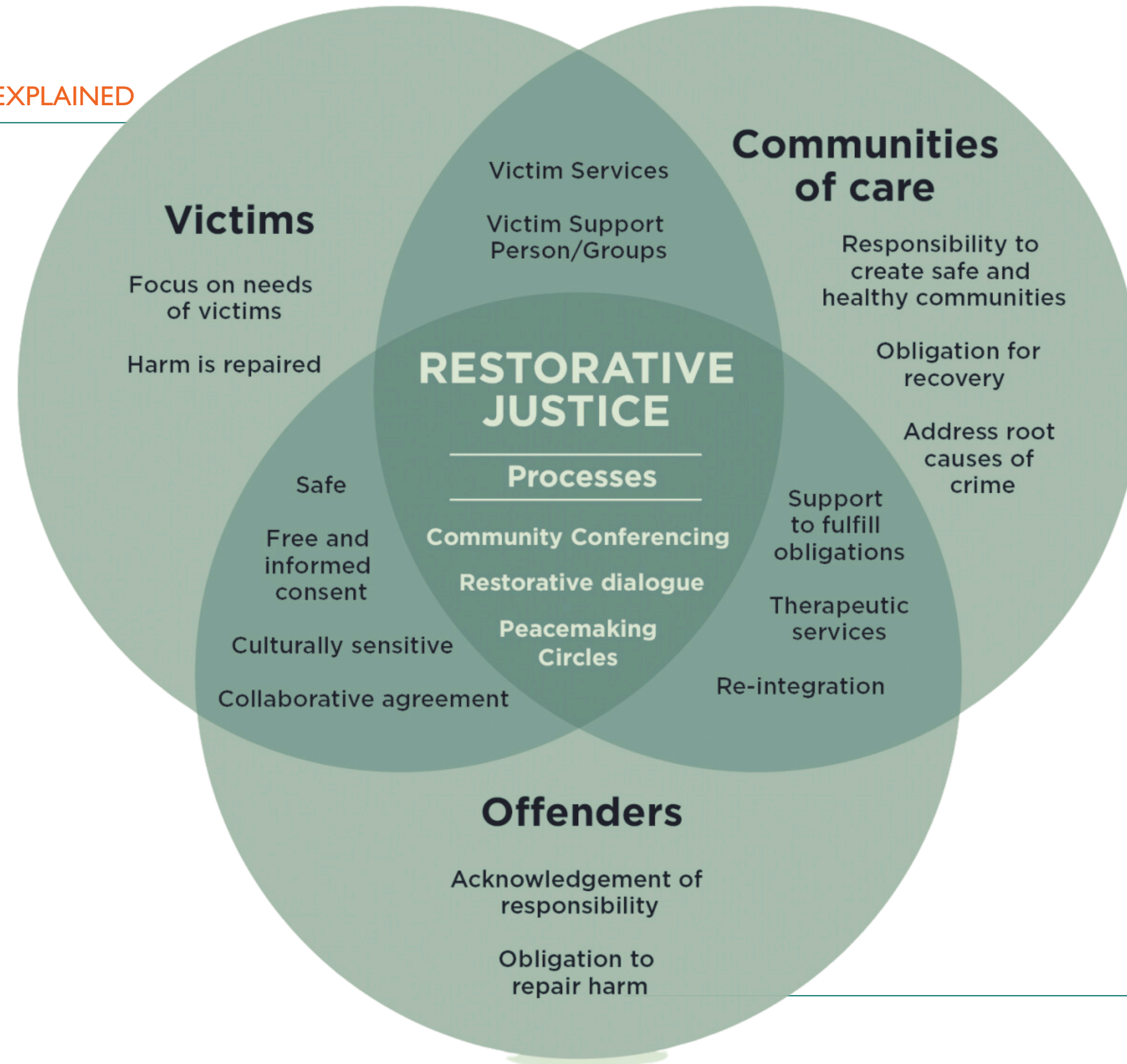
- RESTORATIVE PRACTICES:

According to the International Institute for Restorative Practices (IIRP), **Restorative Practices** is an emerging social science that studies how to strengthen and build relationships between individuals as well as social connections within communities. Though new to the social sciences, restorative practices has deep roots within indigenous communities throughout the world.



RESTORATIVE JUSTICE DISCUSSION:

RESTORATIVE JUSTICE & PRACTICES: EXPLAINED



RESTORATIVE PARTNERS: PROGRAMS & SERVICES




IN-CUSTODY PROGRAMS:

- **VOLUNTEER PROGRAMS:**

Art, Sports, Cooking, Sunday Service, Faith Forward, Music, Ping Pong, Chess, Gardening, AA, Education/Career Prep, Peer Leader Party, Book Club and Birthday Celebrations

- **FACILITATED PROGRAMS:**

Restorative Justice Process Group, Alternatives to Violence Project, Crossroads, Healthy Boundaries, and Healing Dialogue and Action (CMC)

 Have any new
program suggestions?



RE-ENTRY PROGRAMS & SERVICES:

- Drop-In Re-entry Resource Center
- Re-entry System Navigation
- Substance Use Outpatient Treatment
- Thinking for a Change for Adults on Probation
- Culinary & Internship Program



RECOVERY RE-ENTRY HOMES:

- Los Osos Women's Home (9 beds)
- Los Osos Men's Home (8 beds)
- Anna's Home (Upstairs: 3 women and their children; Downstairs: 9 women)
- LyonHeart Place (2 homes/14 beds)



ANNA'S HOME





You're Invited to

Anna's Royal Tea



A Whimsical Afternoon of Tea & Transformation

Saturday, May 31, 2025

Paso Robles | 1:30PM — 4:00PM | 1006 Vista Grande Paso
Robles, California 93446

Purchase your tickets today at

www.restorativepartners.events/annasroyaltea

Enjoy a Taste of Transformation

Catered by The Bridge Cafe, a social enterprise of
Restorative Partners, enjoy:



Fresh tea & crumpets
Delicate finger sandwiches
Petite fours & specialty cakes

Why It Matters

All proceeds support Anna's Home, a recovery home and
program for women and their children—helping families
heal, grow, and thrive in a safe and supportive
environment.

"Alice in Wonderland Theme"



Dress to impress in your finest tea party attire or
Wonderland-inspired look.

Don't forget your hat! Enter our Hat Contest for a chance to
win whimsical prizes.



IN THE COMMUNITY

- RJ Conferencing Program
- Expungement Support
- Education and Training for Partners i.e. Cal Poly; Grizzly Academy; Bridging the Gap Event



SOCIAL ENTERPRISE:

THE BRIDGE CAFE

1074 Higuera Street,
Downtown San Luis Obispo

WWW.THEBRIDGECAFE.ORG





Hope Rising: Transforming Lives, Strengthening Communities



The RP Healing and Restoration Campus will offer permanent and transitional supportive housing and services, job training, for individuals reentering San Luis Obispo County, breaking cycles of homelessness and recidivism to create a stronger, more inclusive community.

THANK YOU.



WWW.RESTORATIVEPARTNERS.ORG