



## COUNTY OF SAN LUIS OBISPO HEALTH AGENCY

### PUBLIC HEALTH DEPARTMENT

**Nicholas Drews** *Health Agency Director*

**Penny Borenstein, MD, MPH** *Health Officer/Public Health Director*

---

## **Subject: Installation Standard for Chemical Dispensers**

May 18, 2022

Effective July 1, 2022, all chemical dispensers installed in custodial closets or any other location in the County of San Luis Obispo shall comply with Section 603.5.21 of the California Plumbing Code:

### **603.5.21 Chemical Dispensers**

The water supply to chemical dispensers shall be protected against [backflow](#). The chemical dispenser shall comply with ASSE 1055 or the water supply shall be protected by one of the following methods:

1. Air gap
2. Atmospheric [vacuum breaker](#) (AVB)
3. [Pressure vacuum breaker backflow](#) prevention assembly (PVB)
4. Spill-resistant [pressure vacuum breaker](#) (SVB)
5. Reduced-[pressure](#) principle [backflow](#) prevention assembly (RP)

Chemical dispensers should be supplied by a dedicated water supply where practicable. In many cases dispensers will be supplied by faucets in custodial closets. Faucets equipped with an ASSE 1001 atmospheric vacuum breaker shall not have Y-valves or other shutoff valves installed downstream of the AVB. Use of a bleed valve device that conforms to IAPMO PS-104-2019, Pressure Relief Connection for Dispensing Equipment, is allowed downstream of an AVB. AVBs shall not be subjected to more than 12 hours of continuous pressure. Chemical dispensers shall not be mounted above the AVB as the elevated piping can create backpressure.

---

#### **Environmental Health Services**

2156 Sierra Way, Suite B | San Luis Obispo, CA 93401 | (P) 805-781-5544 | (F) 805-781-4211  
[www.slocounty.ca.gov/ehs](http://www.slocounty.ca.gov/ehs)

**Examples of incorrect installations:**

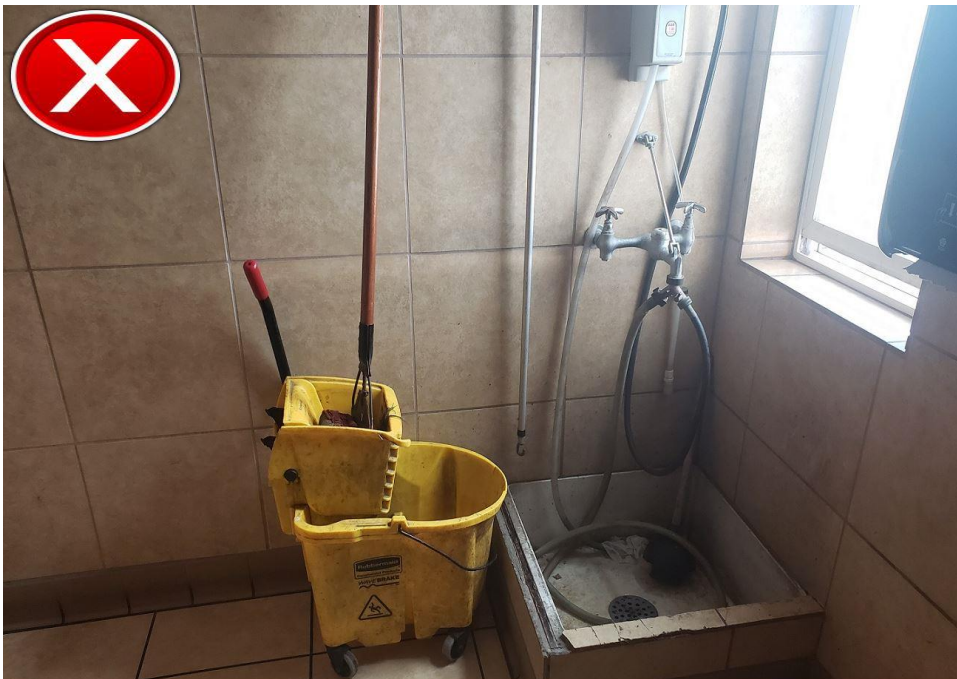
1. Faucet Equipped with an AVB with Y-valve attached.



2. Chemical Dispenser mounted above AVB; Y-valve attached.

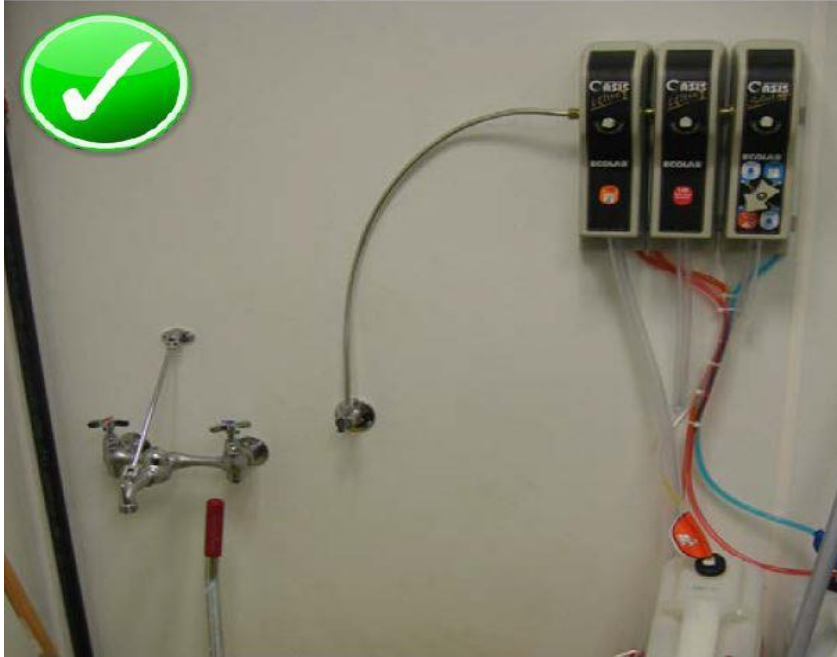


3. Chemical dispenser mounted above AVB; Y-valve attached; hose end below overflow rim of mop sink creating indirect cross-connection.



### Examples of correct installations:

1. Dedicated water supply provided to ASSE 1055 – compliant chemical dispenser; no Y-valve attached to faucet.



2. Pressure Relief Connection conforming to IAPMO PS-104-2019, downstream of the AVB. Chemical dispenser must still be mounted at least six inches below the AVB.



Image courtesy ASSE Int'l.