

## COMPACT MOBILE FOOD OPERATIONS PLUMBING EXAMPLES

The following are some examples of the types of equipment that can be used to accomplish the code requirements.

1. All plumbing lines shall be connected to the tanks with watertight seals.



Watertight seal with attached ball valve on the side wall of a tank



Inside tank view of watertight seal

2. Potable water lines, couplings, and valves shall be listed to NSF standards for drinking water.



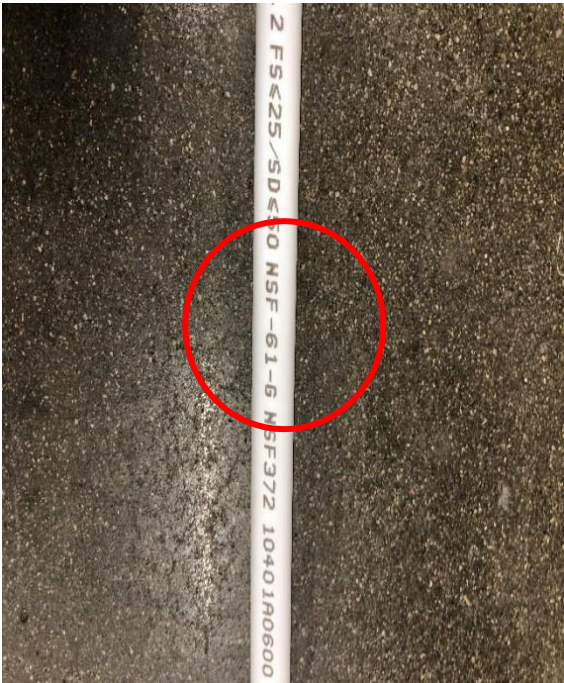
PEX Piping Ball Valve



ANSI/NSF 61 Label on handle



Straight Coupler with ANSI/NSF Label on bag



PEX Potable Water line with NSF- 61 label

3. Potable water tanks and wastewater tanks mounted in the CMFO shall have an air vent overflow installed draining outside of the CMFO in a downward direction covered with 16 mesh per square inch screen.



Pipe with mesh



Typical mesh screens

4. Tanks may be removable. If they are not removable, they must be equipped with a fill line that has a nonthreaded quick disconnect coupler. They must also be installed sloped towards a drainage outlet equipped with a valve.



Fill line to non-portable tank with a quick disconnect coupler



Removable portable tanks



Non-portable tank with connections to vent, fill, drain, and for the water pump



Removable portable tank with quick disconnect for supply or waste water (black lines typically denote waste)

5. Tanks and hose inlets and outlet fittings shall be protected with a quick disconnect



Quick disconnect coupler

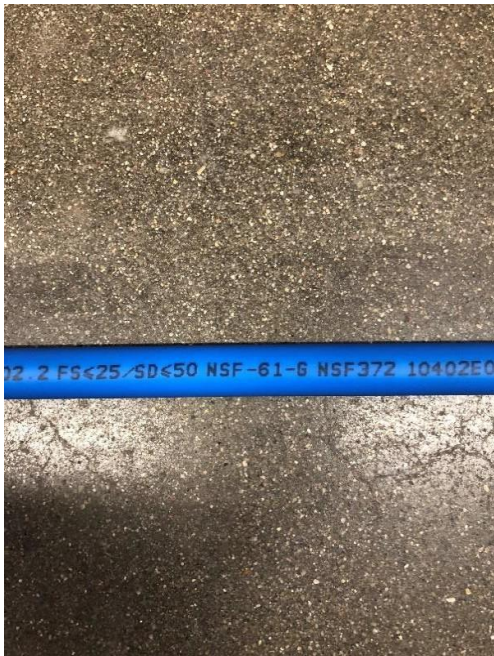
6. Waste lines shall not be the same color as the lines for potable water.



Potable white PVC line with NSF label



Non-potable/wastewater black PVC pipe



Blue potable PEX line with NSF label



Clear potable vinyl line with NSF