



# COUNTY OF SAN LUIS OBISPO HEALTH AGENCY PUBLIC HEALTH LABORATORY

Phone: (805) 781-5507 | Fax: (805) 781-1023  
www.sloPublicHealth.org/Lab

## SPECIMEN COLLECTION & TRANSPORT INSTRUCTIONS

### Mumps virus PCR Specimen Collection Kit

#### SPECIMEN STORAGE & TRANSPORT

Temperature: refrigerated (2 °C – 8 °C / 35.6 °F – 46.4 °F)

Maximum Holding Time: 24 hours at refrigerator temperature (time from collection to test set-up in laboratory (if the specimen cannot be transported to the laboratory within 24 hrs, freeze the specimen at the lowest temperature available)

Exceptions: for any exceptions to collection, storage or transport conditions, please call lab first to discuss.

#### KIT STORAGE

Temperature: room temperature (5 °C – 25 °C / 41 °F – 77 °F)

Expiration: kit must be used prior to expiration date listed on kit label

#### ACCEPTABLE SPECIMEN TYPES

Buccal Swab or Throat Swab in Viral Transport Medium

Urine not recommended

#### TEST ORDER OPTIONS FOR THIS KIT

6170: Mumps PCR

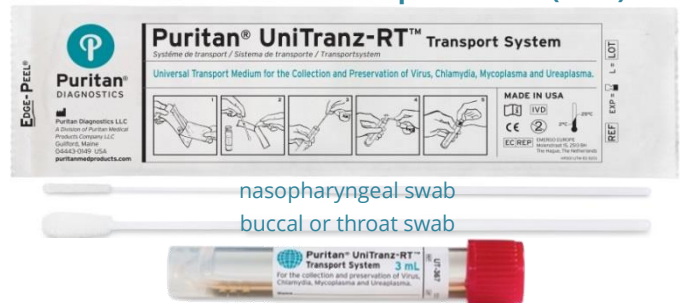
#### REJECTION CRITERIA

- holding time greater than 24 hours for refrigerated VTM
- specimen container not labeled
- specimen container not sealed properly

#### SPECIMEN COLLECTION

1. Collect buccal swab or oropharyngeal swab samples as soon as mumps disease is suspected. RT-PCR has the greatest diagnostic sensitivity when samples collected at first contact with a suspected case.
  - a. The buccal or oral swab specimens are obtained by massaging the parotid gland area for 30 seconds prior to swabbing the area around Stensen's duct. A commercial product designed for the collection of throat specimens or a flocked polyester fiber swab can be used. Dacron or other synthetic swabs are required. Cotton swabs, or wood shafted swabs are unacceptable may contain substances that are inhibitory to enzymes used in RT-PCR. Flocked synthetic swabs appear to be more absorbent and elute samples more efficiently.
  - b. Processing the swabs within 24 hours of collection will enhance the sensitivity of both the RT-PCR and virus isolation techniques.
  - c. Swabs should be placed in 2 ml of standard viral transport medium (VTM). Swirl the swab VTM thoroughly and then ream the swab around the rim of the tube to retain cells and fluid in the tube. The swab can be broken off and left in the tube or discarded.

#### Collection Swabs & Viral Transport Media (VTM) tube

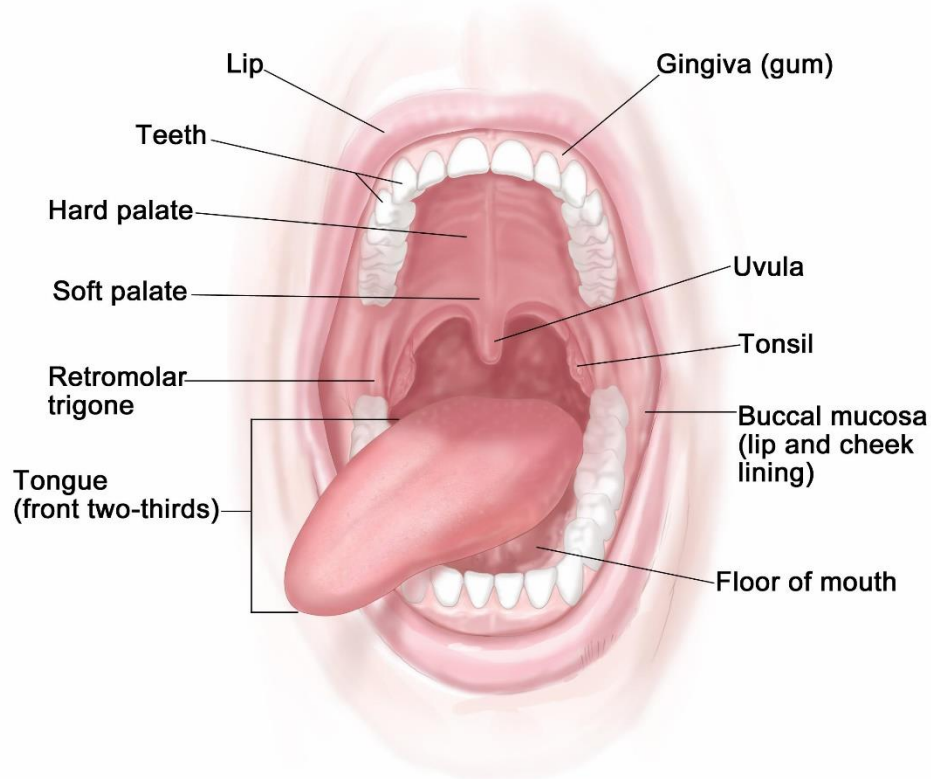


# SPECIMEN COLLECTION & TRANSPORT INSTRUCTIONS

## Mumps virus PCR Specimen Collection Kit

- d. Storage and shipment: Following collection, samples should be maintained at 4°C and shipped on cold packs (4°C) within 24 hours. If there is a delay in shipment, the sample is best preserved by freezing at -70°C. Frozen samples should be shipped on dry ice.
2. Urine samples have not been as useful as buccal and oral specimens for virus isolation or detection of mumps RNA. Unlike buccal and oral specimens, urine samples may not be positive for mumps virus until >4 days after symptom onset.
  - a. A minimum volume of 50 ml of urine should be collected in a sterile container and then processed by centrifuging at 2500 × g for 15 minutes at 4°C.
  - b. The sediment should be resuspended in 2 ml of VTM. Storage and Shipment: Store urine sediment in VTM at 4°C and, if possible, ship on cold packs within 24 hours.
  - c. The best method for preserving mumps virus in processed (centrifuged) urine is to freeze the sample at -70°C and ship on dry ice.

### Anatomy of the Oral Cavity



© 2012 Terese Winslow LLC  
U.S. Govt. has certain rights