



What do YOU need to know? STORMS AND FLOODS

Your home may be located in a flood zone, please read the following flood preparation information and save this information for future reference!



ARE YOU PREPARED?

Floods are one of the most common natural disasters causing more damage and loss of life than any other weather event. Properties in low lying areas and in floodplains are especially vulnerable.

It is important to understand how floods can affect your home, workplace and children's schools.

Get familiar with the alert and notification systems that may be used to alert you, and know what actions to take when an evacuation is ordered.

Knowledge is power!

Visit ReadySLO.org/storms to learn more.

BEFORE A STORM OR FLOOD:

- Locate the Safe Point Assembly Area on the back of this flyer.
- Create a family plan and discuss how you will communicate during an emergency.
- Make a "Grab and Go" bag of emergency materials in case you need to evacuate. Keep ID, insurance cards, cash, and contact phone numbers with you.
- Charge phones and ensure your vehicle has fuel.
- Keep sandbags, plywood, plastic sheeting, lumber and other emergency building materials handy for water-proofing.
- Sign up now to receive alerts at AlertSLO.org

DURING A STORM OR FLOOD:

- Listen to instructions from public officials broadcast on local TV / radio and alert and notification systems such as wireless Emergency Alerts and Reverse 911.
- Pay attention to Evacuation Warnings and Orders, know the difference.
- Don't drive through flooded areas, creek crossings or road closures. Even a few inches of moving water is dangerous.
- Stay away from power lines; electrocution is a frequent cause of death during flooding.
- Use common sense and try to stay calm.

If you are experiencing an emergency, call 911

For drainage or flooding issues during business hours, call the County of San Luis Obispo Public Works Department: (805) 781-5252

ARROYO GRANDE CREEK CHANNEL FLOODING AND EVACUATION INFORMATION

Why do I need to be prepared?

- Arroyo Grande Creek, through the community of Oceano, was channelized within levees constructed in 1961. **Levees do not completely eliminate the risk of flooding.**
- Vegetation and sediment are annually maintained within the creek to minimize flood risk. However, **the levee could still potentially fail during a large storm event and cause flooding** in areas within one quarter mile of the creek; as indicated by the map below.
- **When levees break or overtop, flooding has catastrophic potential.** In 2023, the south levee breached and flooded hundreds of acres of crop-land and several residences.

What is the Plan?

- The County's automated flood warning system provides real-time updates on developing flood, rainfall, and weather conditions. You can view the system at wr.slocountywater.org
- In the event of a potential levee failure or flood, an **Evacuation Warning** or **Evacuation Order** will be issued based on pre-designated areas.
- You are located in:
 - **Evacuation Zone** [REDACTED]
- Get informed, join our mailing list! For more information about the Arroyo Grande Creek Levee and Flood Evacuation Areas, visit slocounty.ca.gov/zone1-1a or **scan the QR code here:**



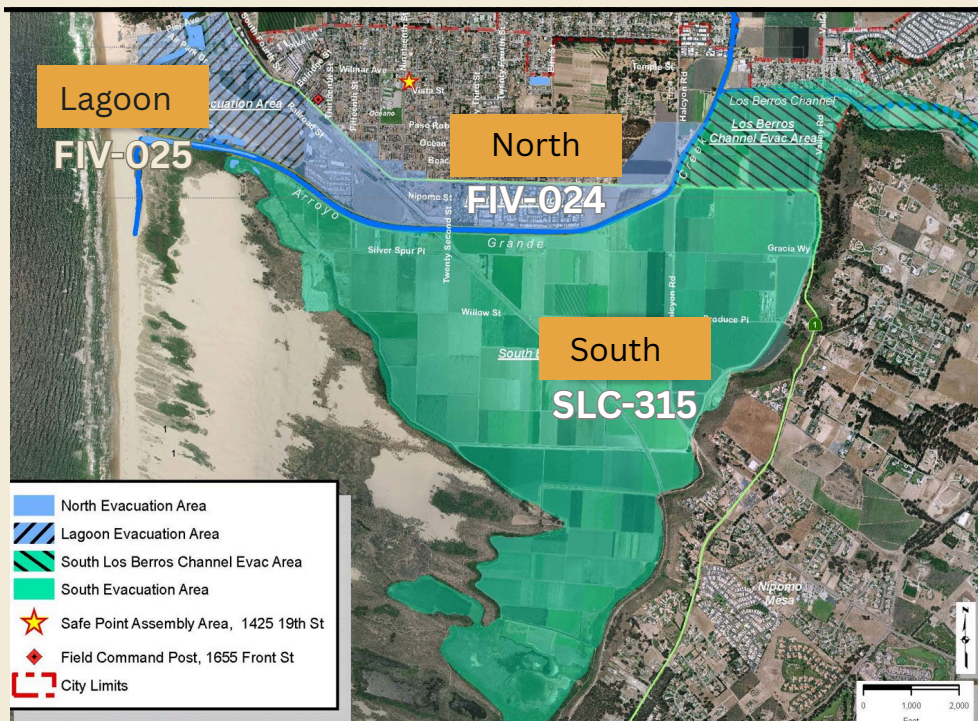
ARROYO GRANDE CREEK LEVEE FLOOD EVACUATION AREAS

Evacuation Warning

- **PREPARE TO LEAVE** - An Evacuation Warning is issued to alert community members of a potential threat to life and property from an emergency incident.
- Gather your family, pets, and emergency supply kit.
- If you know that you won't be able to evacuate quickly, consider leaving when an evacuation warning is issued.

Evacuation Order

- **LEAVE NOW** - An Evacuation Order is issued to move community members out of an area due to an immediate threat to life and property from an emergency incident.
- Load your family, pets, and emergency supply kit.
- Take essential documents and records.



The Oceano Community Center (1425 19th Street), identified on the map above as the Safe Point Assembly Area, serves as a designated Safe Point and Temporary Evacuation Point.