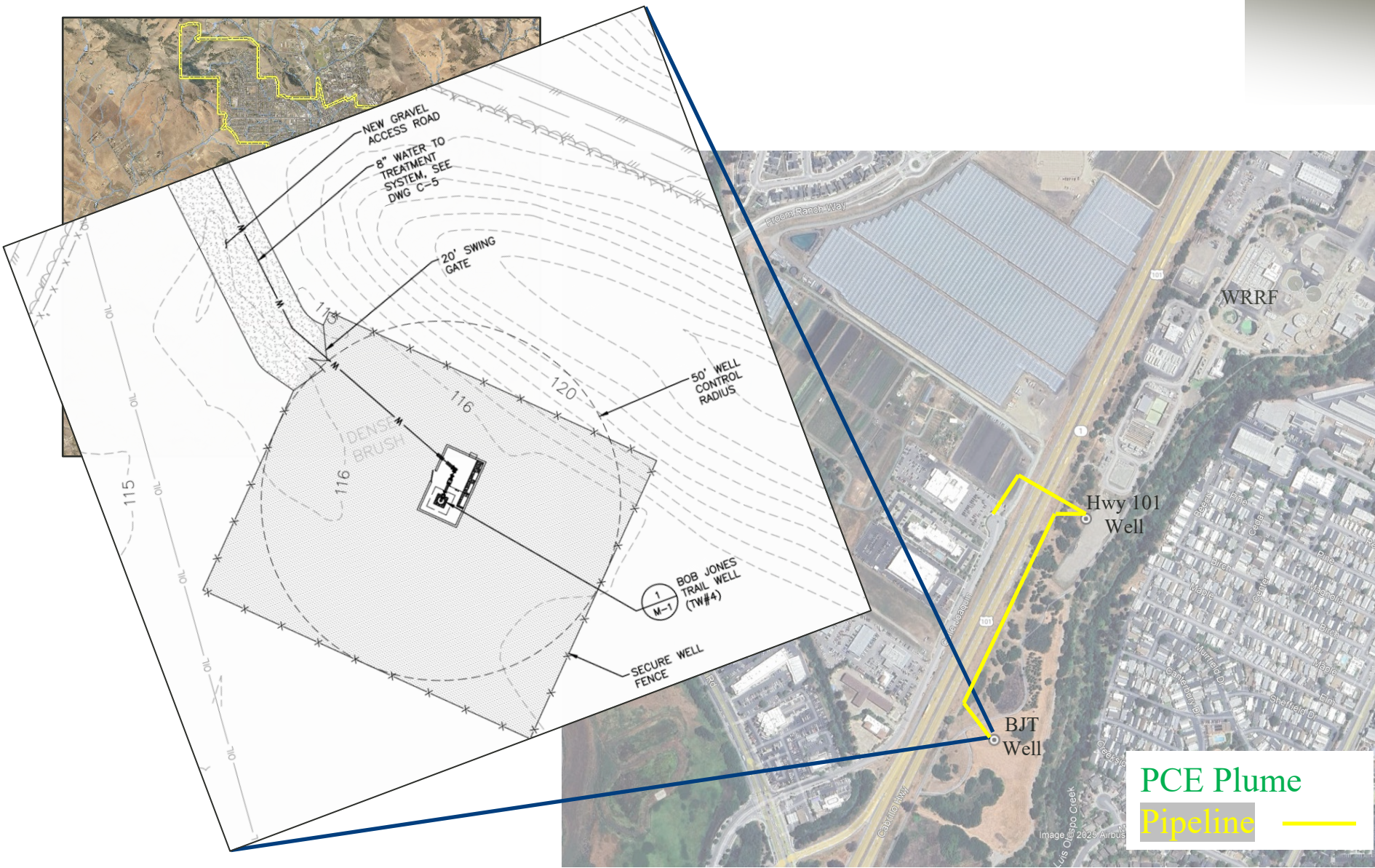


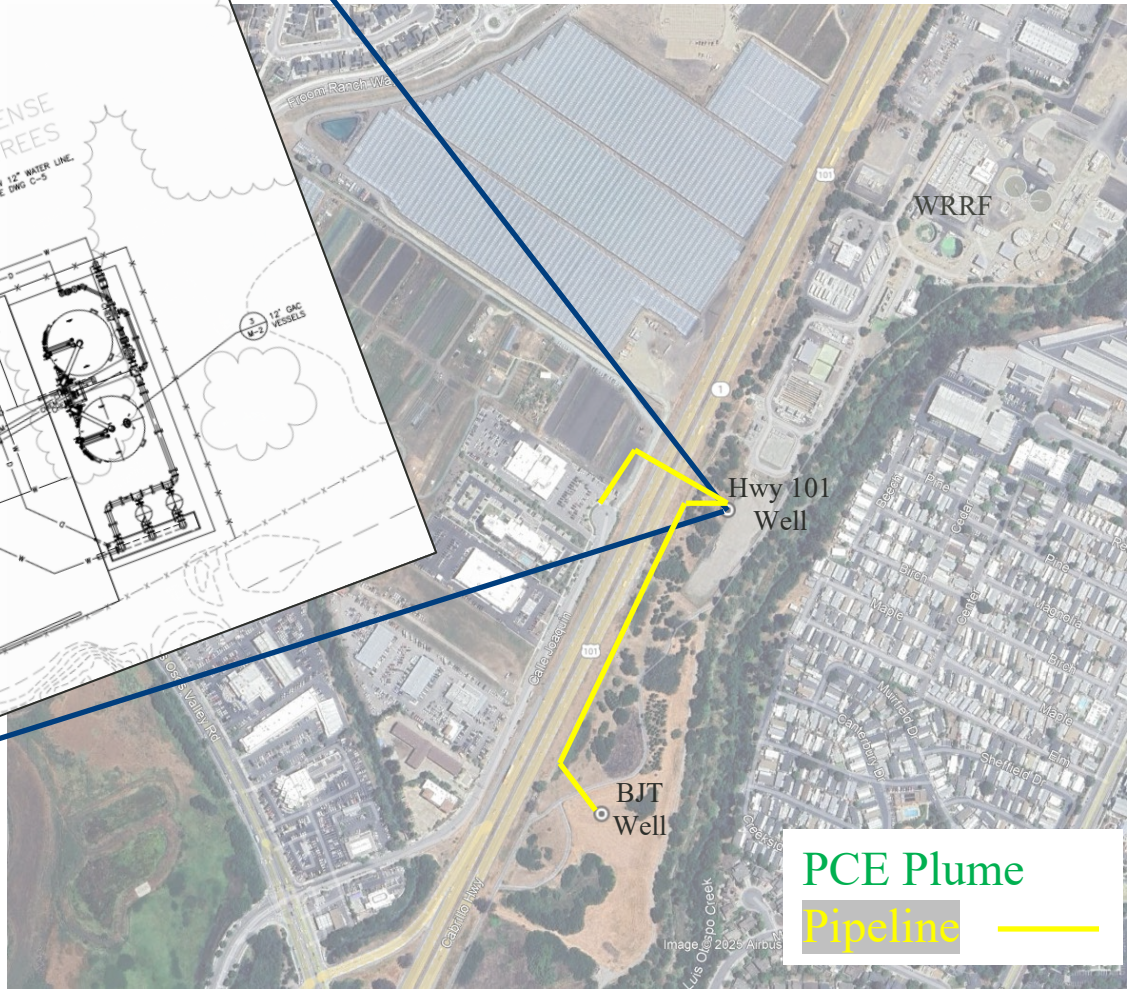
CITY OF SAN LUIS OBISPO

Groundwater Cleanup Project



CITY OF SAN LUIS OBISPO

Groundwater Cleanup Project



**PCE Plume
Pipeline** —



CITY OF SAN LUIS OBISPO

Groundwater Cleanup Project

City of San Luis Obispo Groundwater Cleanup Project



Improve water quality in the San Luis Valley Groundwater Basin

Reduce PCE concentrations in groundwater from >12 ug/L to less than 5 ug/L (MCL)

Cleaner water for other groundwater users and cleaner water discharged to the Creek



Expand the City's water supply reliability

600 acre-feet/year, or about 12 percent of the City's current demand

Local source of supply, not reliant on the City's Water Treatment Plant



Utilizes grant funding to provide additional drinking water to the City

Funding includes City funds and Proposition 1 Groundwater Grant Program funds

Grant funding defers the costs for ratepayers and helps to prevent increases in water bills

We are here

Fate & transport modeling

Locate extraction & monitoring wells

Install wells & treatment system

Pump, treat, test, & distribute groundwater



CITY OF SAN LUIS OBISPO