

# County of San Luis Obispo

## SB552

**WRAC Meeting**  
**April 2, 2025**



Source: County of San Luis Obispo



# Agenda

- 1. Introductions
- 2. Project Introduction by County
- 3. Water System Consolidation Method
- 4. Consolidation Method Questions



# Existing Wells

Existing wells over the prioritized groundwater basins

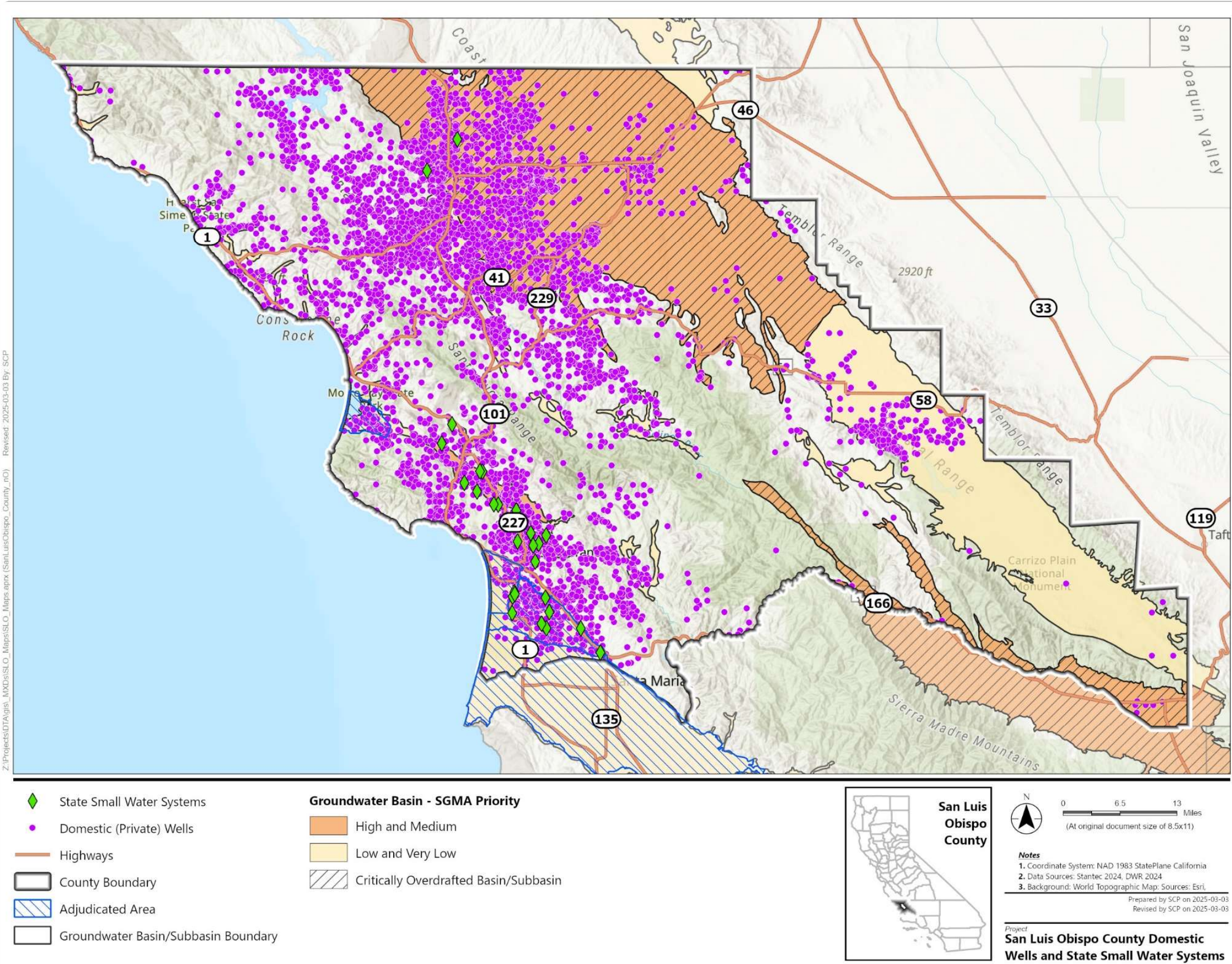
Well information provided by the County

15,178 domestic (private wells)

27 State Small Water Systems

Map for Reference Purposes Only:

Data is provisional and has not been verified for accuracy. The County of San Luis Obispo does not warrant the accuracy of the data and is not responsible for damages resulting from its use.





# Water Systems

- Cities
- Community services districts  
county service areas
- Special districts that serve water
- Mutual water companies
- Nontransient noncommunity water systems that serve schools
- Water companies
- Total of 83 systems fully within SLO County

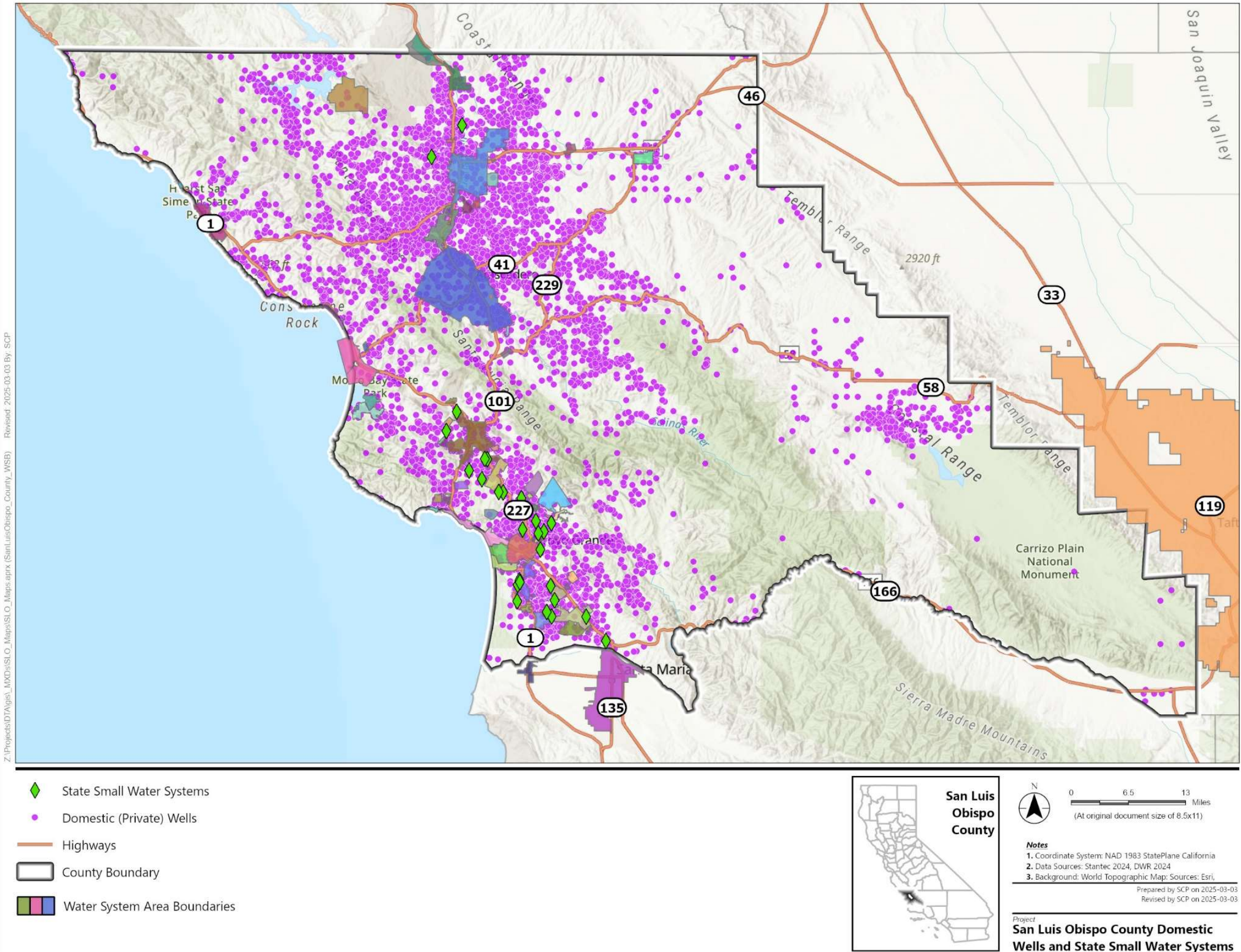




# Wells and Agencies

Map for Reference Purposes Only:

Data is provisional and has not been verified for accuracy. The County of San Luis Obispo does not warrant the accuracy of the data and is not responsible for damages resulting from its use.



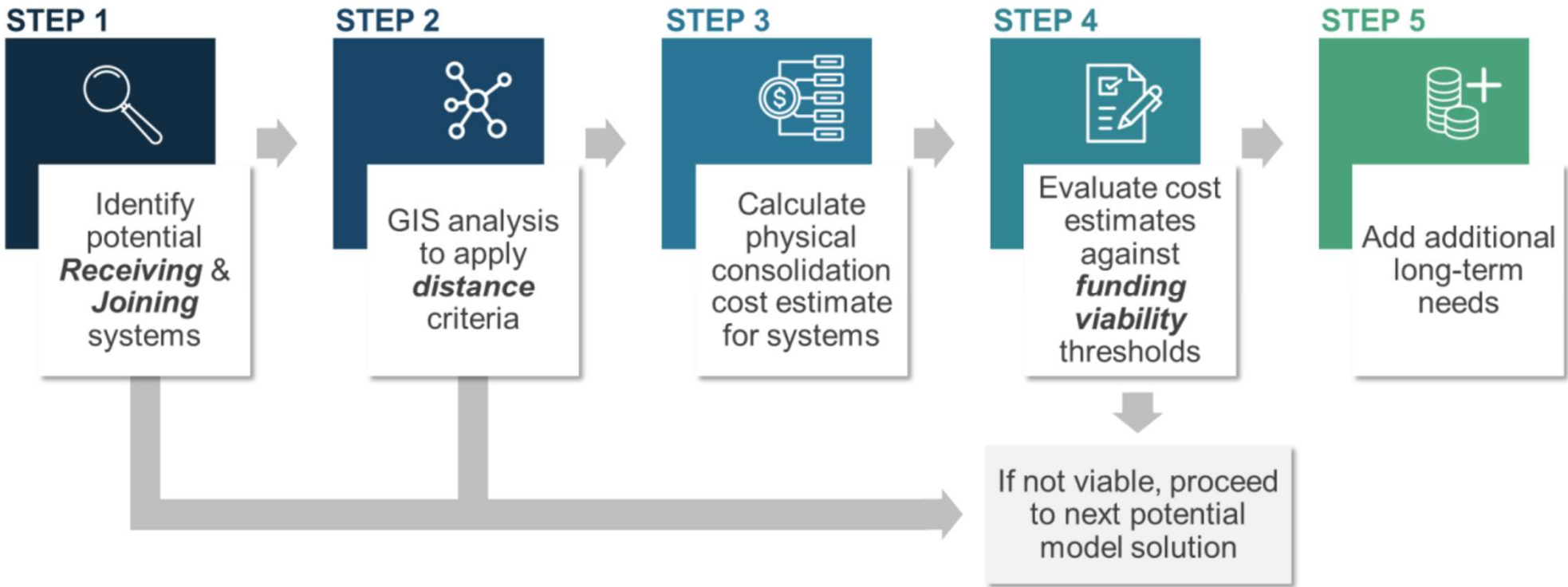


# Method

- Water Boards Physical Consolidation Cost Estimate Methodology- Last Updated June 2024
- Five Step Process



## SUPPLEMENTAL APPENDIX: PHYSICAL CONSOLIDATION COST ESTIMATE METHODOLOGY



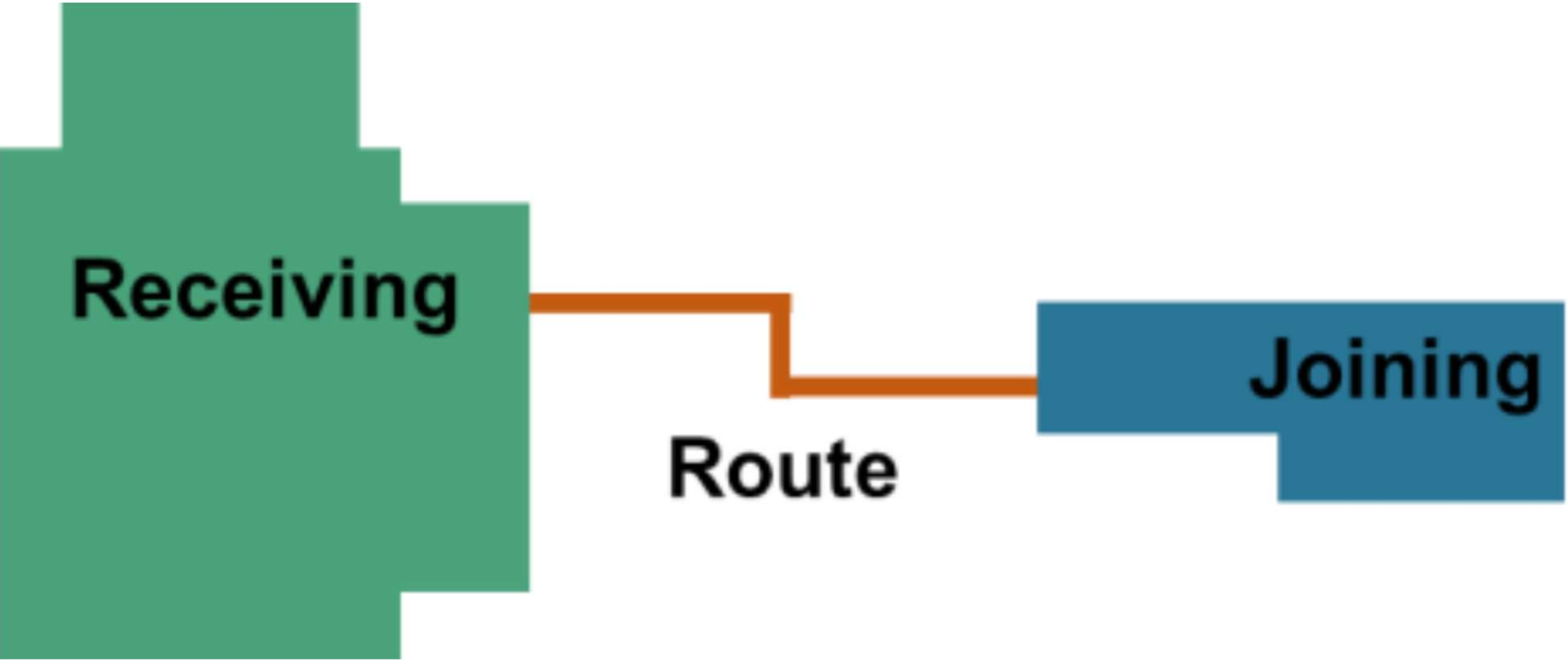


# Step 1: Receiving and Joining

First, identify potential one-to-one physical consolidations between two different systems

**Receiving Systems:** Commonly larger public water systems that expand to subsume Joining systems and provide water supply to both of their customers.

**Joining Systems:** Commonly smaller public water systems, state small water systems, and domestic wells that are dissolved into existing receiving public water systems and are no longer responsible for providing water to their own customers.





# Step 1: Joining Criteria

Per the IWG, we will consider public water systems and State Smalls to be included regardless of their status. However, there may be little incentive to consolidate if not at risk.

## Joining Systems:

Failing Public Water Systems	≤ 1,000 service connections.
At-Risk Public Water Systems	≤ 500 service connections.
Potentially At-Risk, Not At-Risk, & Not Assessed Public Water Systems	<del>Excluded</del> ≤ 500 service connections
State Small Water Systems & Domestic Wells	<del>High Risk in the Water Quality and/or Water Shortage categories in the Risk Assessment.</del>



# Step 1: Receiving Criteria

State small and domestic systems are not considered receiving systems.

This criteria means that the receiving system could be failing or at-risk public water systems.

## Receiving Systems for Joining Public Water Systems:

Failing Public Water Systems	<i>Largest System &gt; 1,000 service connections.</i>
At-Risk Public Water Systems	<i>Largest System &gt; 500 service connections.</i>
Potentially At-Risk, Not At-Risk, Not Assessed Public Water Systems	<i>Largest System &gt; 500 service connections.</i>
State Small Water Systems & Domestic Wells	<i>Excluded</i>

## Receiving Systems for Joining State Small Water Systems & Domestic Wells:

Failing Public Water Systems	<i>Largest Nearby System</i>
At-Risk Public Water Systems	<i>Largest Nearby System</i>
Potentially At-Risk, Not At-Risk, Not Assessed Public Water Systems	<i>Largest Nearby System</i>
State Small Water Systems & Domestic Wells	<i>Excluded</i>



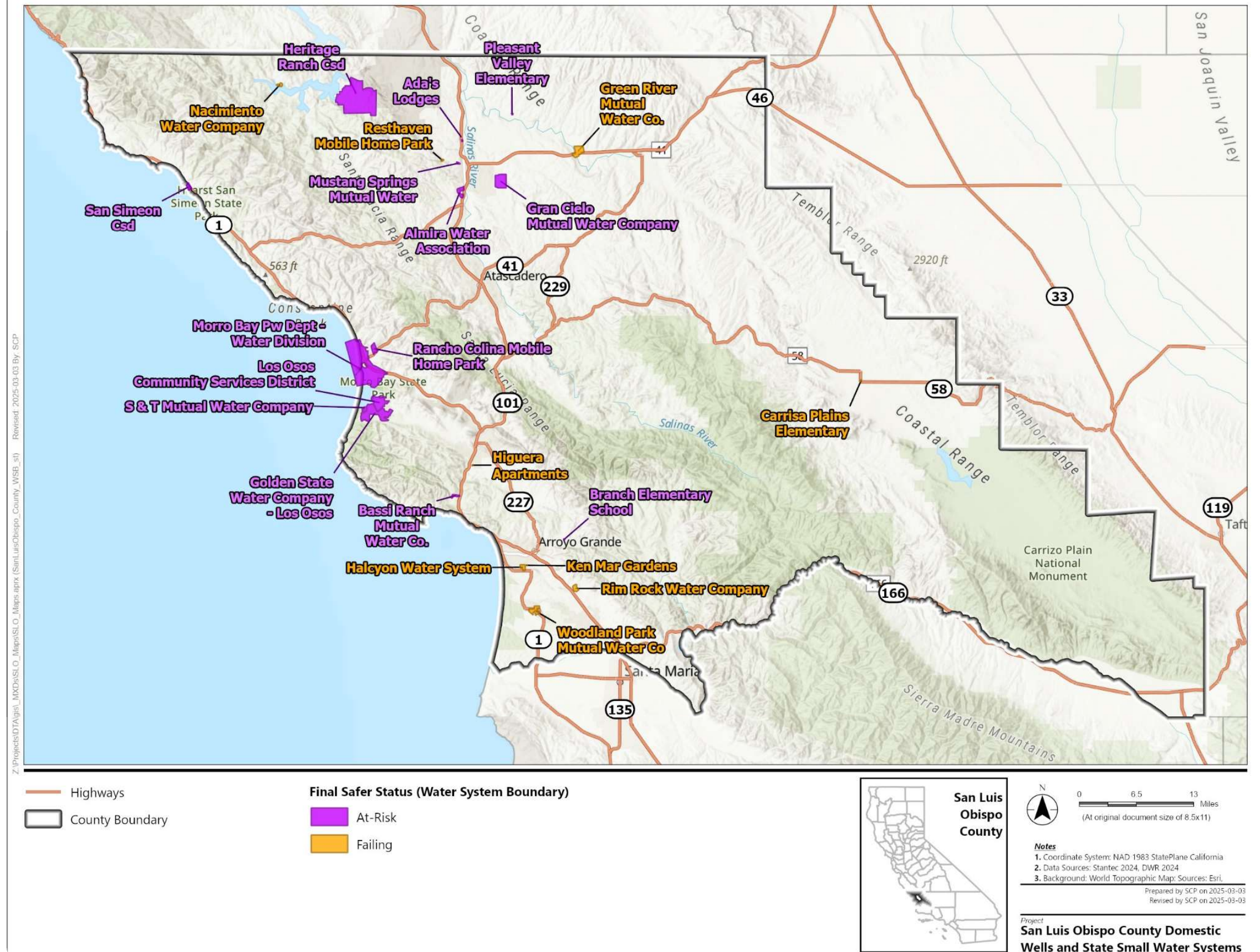
# Receiving System Exclusions?

Should failing and as-risk systems be excluded from being a receiving system?

IWG said to follow the State methodology.

## System Changes:

- San Simeon CSD applied for dissolution and various options are being considered
- Higuera Apartments annexation was approved by SLO City Council in July 2024.



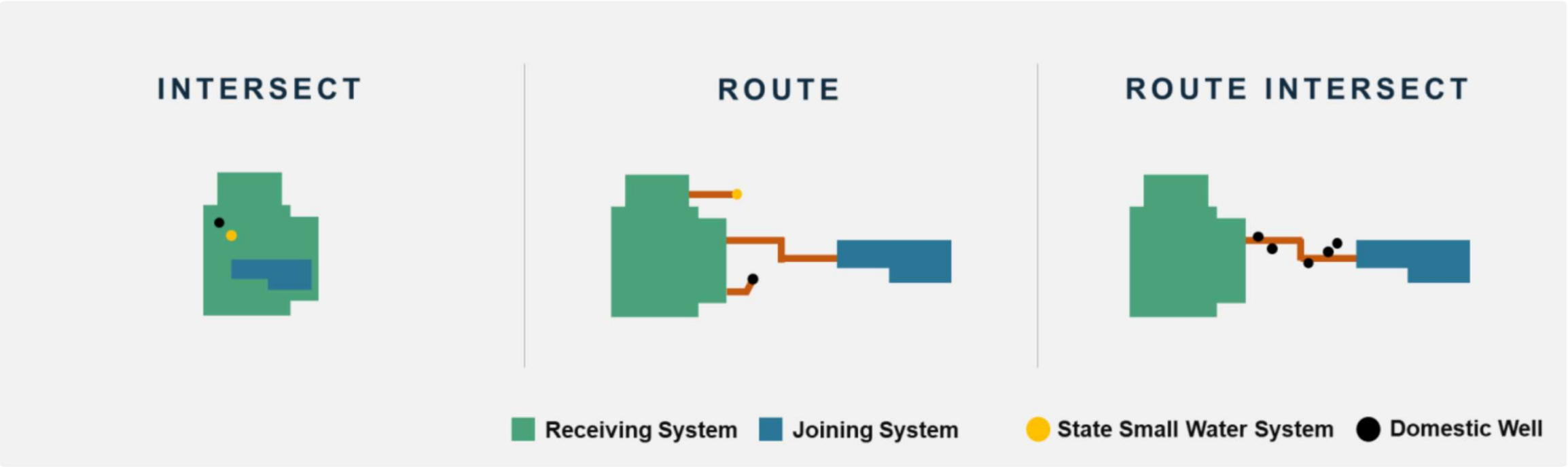


# Step 2: Distance Criteria

**Intersect:** Where the Joining system, state small water system, or domestic well is physically located within the service area boundary of a potential Receiving system.

**Route:** Where the Joining system is physically located within a maximum distance from the service area boundary of a potential Receiving system along a street.

**Route Intersect:** Where the Joining state small water system or domestic well is along the modeled route of a potential public water system physical consolidation.



Viability Criteria	
Public Water Systems	<ul style="list-style-type: none"><li>Intersect</li><li>Route: Maximum route distance = 3 miles</li></ul>
State Small Water Systems	<ul style="list-style-type: none"><li>Intersect</li><li>Route: Maximum route distance = 0.38 miles</li><li>Route Intersect: Systems that intersect a viable public water system's modeled physical consolidation route.</li></ul>
Domestic Wells	<ul style="list-style-type: none"><li>Intersect</li><li>Route: Maximum distance = 0.38 miles</li><li>Route Intersect: Domestic wells located within a 1-mile section that intersects a viable public water system's modeled physical consolidation route.</li></ul>



# Step 3: Cost Estimate

Cost Component	Application	Cost Estimate (\$)
Pipeline (\$/Lf)	Based on modeled route.	\$220
Connection Fees (\$/Joining system service connection)	Averaging connection fees for Receiving systems for each scenario	<ul style="list-style-type: none"><li>Public Water Systems = \$5,437</li><li>SSWS = \$2,600</li><li>DW = \$3,342</li></ul>
Service Line Cost (\$/Project)	Included for both intersect and route Joining systems	\$6,200
Administrative Cost (\$/Project)	Included for all Failing and At-Risk systems, except At-Risk Domestic wells	15% of total construction cost.
CEQA Cost (\$/Project)	<ul style="list-style-type: none"><li>Included for all Failing and At-Risk systems, except At-Risk DWs</li></ul>	<ul style="list-style-type: none"><li>Intersect systems = \$25,000</li><li>Route systems = \$100,000</li></ul>

Pipelines are designed to convey treated water from receiving systems to Joining systems’ customers by connecting to the Receiving system’s existing distribution system. Pipelines are assumed to be 12-inch diameter to ensure delivery of water at adequate pressure throughout the system.

Material cost for 12” PVC C900 = \$55 per linear foot

Installation Cost = \$165 per linear foot

Pipeline Cost/lf= Material (\$55) + Installation (\$165) = \$220 /lf



# Step 3: Cost Estimate

Should we include a contingency for all systems regardless of status?

Inflation is forecast between April 2023 to April 2024. Inflation will need to be increased.

SLO is a Suburban County

Cost Component	Application	Cost Estimate (\$)
Treatment Cost	Included for Failing Receiving systems due to water quality issues	Apply BAT <sup>27</sup> Capital and O&M <sup>28</sup> per failing analyte. <i>(excluded from physical consolidation funding viability determination)</i>
Additional Source	Included for Receiving systems with single source of water supply.	Additional cost for well if system relies on one source. <i>(excluded from physical consolidation funding viability determination)</i>
Contingency	Included for all Failing and At-Risk systems, except At-Risk DWs	20% Total cost
Inflation	Included for all systems regardless of size and type	3.1% Total cost
Planning & Construction	Included for all systems regardless of size and type	10% Total cost
Engineering Services	Included for all systems regardless of size and type	15% Total cost
Regional Multiplier	Included for all systems regardless of size and type	<ul style="list-style-type: none"><li>Rural Counties (0%)</li><li>Urban Counties (+32%)</li><li>Suburban Counties (+30%)</li></ul>



# Step 4: Funding Viability

Funding viability thresholds from 2023-24 Clean Water State Revolving Fund Intended Use Plan, then inflated by 20% per DDW and DFA.

The Division of Financial Assistance does not currently employ funding viability thresholds for consolidation projects for state small water systems and domestic wells. Funding decisions are made on a case-by-case basis.

## Funding Viability Criteria

Public Water System	Estimated Capital Cost per Connection < \$96,000
> 75 service connections	
Public Water System	Estimated Total Capital Cost < \$7.2 million
< 75 service connections	
State Small Water System	Estimated Total Capital Cost < \$2 million
Domestic Well	Estimated Total Capital Cost < \$150,000



# Step 5: Model Additional Infrastructure/Admin Needs for Receiving Systems

**Treatment Cost:** If failing due to water quality issues, then add treatment replacement

**Additional Source (Well Cost):** If single source of water supply, then add backup public supply well.

**Other Essential Infrastructure (OEI):** If aging infrastructure, then add costs for upgrades and replacements. Need to follow the Supplemental Appendix: Additional Long- Term Modeled Solutions Cost Estimate Methodology.

**Additional Costs:** May include technical assistance and/or administrator assistance per Supplemental Appendix.



# Receiving Systems

83 Water Systems Total  
25 Water Systems meet “Receiving System” criteria:  
• > 500 services connections

Safer Status

0 systems Failing  
3 systems Potentially At-Risk per SAFER status  
4 systems At-Risk per SAFER status

System ID	Receiving System Name	Safer Status	Service Connections	Population Served
CA4010024	SLO CWWWD NO. 23 - SANTA MARGARITA	Not At-Risk	506	1291
CA4010002	ATASCADERO MUTUAL WATER CO	Not At-Risk	10961	30618
CA4010015	MORRO ROCK MUTUAL WATER CO	Not At-Risk	650	1874
CA4010008	PISMO BEACH WATER DEPARTMENT	Not At-Risk	5335	8036
CA4010009	SAN LUIS OBISPO WATER DEPARTMENT	Not At-Risk	17012	47788
CA4010003	SAN MIGUELITO MWC	Not At-Risk	685	1600
CA4010005	OCEANO COMM SERVICES DIST.	Not At-Risk	2207	7601
CA4010014	CAMBRIA COMM SERVICES DIST	Not At-Risk	4034	5532
CA4010010	SAN MIGUEL COMMUNITY SERVICES DISTRICT	Potentially At-Risk	907	2600
CA4010006	CAYUCOS BEACH MUTUAL WATER COMPANY	Not At-Risk	778	2369
CA4010019	TEMPLETON CSD	Not At-Risk	3004	8011
CA4010832	ATASCADERO STATE HOSPITAL	Not At-Risk	875	4100
CA4010023	GOLDEN STATE WATER COMPANY - EDNA	Potentially At-Risk	602	1477
CA4010001	CITY OF ARROYO GRANDE UTILITIES DIVISION	Not At-Risk	6854	17963
CA4010012	HERITAGE RANCH CSD	At-Risk	1963	2956
CA4010901	SLOCSA #10A - CAYUCOS	Potentially At-Risk	784	1200
CA4010026	NIPOMO COMM SERVICES DIST	Not At-Risk	4512	13771
CA4010004	CITY OF GROVER BEACH PUBLIC WORKS DEPT	Not At-Risk	4999	12701
CA4010016	LOS OSOS COMMUNITY SERVICES DISTRICT	At-Risk	2776	7086
CA4010017	GOLDEN STATE WATER COMPANY - LOS OSOS	At-Risk	2683	5949
CA4010018	GOLDEN STATE WATER COMPANY - NIPOMO	Not At-Risk	1492	4506
CA4010040	GOLDEN STATE WATER COMPANY-CYPRESS RIDGE	Not At-Risk	966	2026
CA4010081	WOODLANDS DEVELOPMENT	Not At-Risk	1544	3862
CA4010011	MORRO BAY PW DEPT - WATER DIVISION	At-Risk	5892	13757
CA4010007	CITY OF PASO ROBLES WATER DIVISION	Not At-Risk	10822	31176



# Joining System

- 83 Water Systems Total
- 58 Water Systems meet the “Joining” criteria:
- Less than < 500 connections
- 45 Water Systems met the “Joining” criteria due to distance
- Less < 3 miles
  - intersect (distance of 0)
  - route <0.38 miles

JOINING SYSTEM INFORMATION					RECEIVING SYSTEM INFORMATION	
Joining Water System Name	Population	Service Connections	Safer Status	Analysis Results Category	Receiving Water System Name	Safer Status
ADA'S LODGES	25	1	At-Risk	Routed	CITY OF PASO ROBLES WATER DIVISION	Not At-Risk
AFUERA DE CHORRO WATER COMPANY	79	25	Potentially At-Risk	Routed	SAN LUIS OBISPO WATER DEPARTMENT	Not At-Risk
ALMIRA WATER ASSOCIATION	40	20	At-Risk	Routed	CITY OF PASO ROBLES WATER DIVISION	Not At-Risk
ANZA VINEYARD ESTATES MUTUAL WATER CO	60	6	Not At-Risk	> 3 Miles		
AVILA BEACH COMMUNITY SERVICES DISTRICT	1630	388	Not At-Risk	Routed	SAN MIGUELITO MWC	Not At-Risk
AVILA VALLEY MUTUAL WATER CO	75	28	Not At-Risk	Routed	SAN MIGUELITO MWC	Not At-Risk
BARON CANYON MUTUAL WATER CO.	81	25	Not At-Risk	Routed	SAN MIGUELITO MWC	Not At-Risk
BASSI RANCH MUTUAL WATER CO.	85	27	At-Risk	Routed	SAN MIGUELITO MWC	Not At-Risk
BEAR VALLEY WATER COMPANY	45	18	Not At-Risk	Routed	SAN LUIS OBISPO WATER DEPARTMENT	Not At-Risk
BRANCH ELEMENTARY SCHOOL	253	1	At-Risk	Routed	CITY OF ARROYO GRANDE UTILITIES DIVISION	Not At-Risk
CALIFORNIA MENS COLONY	15000	12	Not At-Risk	Routed	SAN LUIS OBISPO WATER DEPARTMENT	Not At-Risk
CALLENDER GROVE MUTUAL WATER	126	37	Not At-Risk	Routed	GOLDEN STATE WATER COMPANY-CYPRESS RIDGE	Not At-Risk
CANYON CREST MUTUAL BENEFIT WC	133	54	Not At-Risk	Routed	CITY OF ARROYO GRANDE UTILITIES DIVISION	Not At-Risk
CARRISA PLAINS ELEMENTARY	65	1	Failing	> 3 Miles		
CHAMISAL VINEYARDS	40	2		> 3 Miles		
COASTAL CHRISTIAN SCHOOL	650	1	Not At-Risk	Routed	PISMO BEACH WATER DEPARTMENT	Not At-Risk
COUNTRY HILLS ESTATES	60	26	Not At-Risk	Routed	CITY OF ARROYO GRANDE UTILITIES DIVISION	Not At-Risk
CRESTON ELEMENTARY SCHOOL	100	1	Not At-Risk	> 3 Miles		
EDNA VALLEY RANCH EAST	132	40	Not At-Risk	> 3 Miles		
GARDEN FARMS C.W.D.	440	117	Not At-Risk	Routed	ATASCADERO MUTUAL WATER CO	Not At-Risk
GRAN CIELO MUTUAL WATER COMPANY	160	42	At-Risk	Routed	CITY OF PASO ROBLES WATER DIVISION	Not At-Risk
GREEN RIVER MUTUAL WATER CO.	350	124	Failing	> 3 Miles		
H2O, INC	70	25	Not At-Risk	> 3 Miles		
HALCYON WATER SYSTEM	105	46	Failing	Intersects with Receiving System	OCEANO COMM SERVICES DIST.	Not At-Risk
HIGUERA APARTMENTS	30	24	Failing	Routed	SAN LUIS OBISPO WATER DEPARTMENT	Not At-Risk
IRISH HILLS MUTUAL WATER CO	135	58	Not At-Risk	Routed	SAN LUIS OBISPO WATER DEPARTMENT	Not At-Risk
KEN MAR GARDENS	84	49	Failing	Intersects with Receiving System	OCEANO COMM SERVICES DIST.	Not At-Risk
LAGUNA NEGRA MUTUAL WATER CO.	80	29	Not At-Risk	Routed	WOODLANDS DEVELOPMENT	Not At-Risk
LAS VENTANAS RANCH	108	36	Not At-Risk	> 3 Miles		
LAUREATE WATER COMPANY	700	7	Not At-Risk	Routed	SAN LUIS OBISPO WATER DEPARTMENT	Not At-Risk
LOS ROBLES MOBILE HOME ESTATES	420	160	Not At-Risk	Routed	TEMPLETON CSD	Not At-Risk
MESA DUNES MOBILE HOME ESTATES	600	313	Not At-Risk	Routed	GOLDEN STATE WATER COMPANY-CYPRESS RIDGE	Not At-Risk
MONTE SERENO MUTUAL BENEFIT WATER	65	26	Not At-Risk	> 3 Miles		
MUSTANG SPRINGS MUTUAL WATER	30	16	At-Risk	Routed	CITY OF PASO ROBLES WATER DIVISION	Not At-Risk
NACIMIENTO WATER COMPANY	2181	663	Failing	> 3 Miles		
PACIFIC DUNES RANCH	536	1		Routed	OCEANO COMM SERVICES DIST.	Not At-Risk
PLAYA DULCE	35	1	Not Assessed	Routed	PISMO BEACH WATER DEPARTMENT	Not At-Risk
PLEASANT VALLEY ELEMENTARY	100	1	At-Risk	Routed	CITY OF PASO ROBLES WATER DIVISION	Not At-Risk
RANCHO COLINA MOBILE HOME PARK	250	127	At-Risk	Routed	MORRO BAY PW DEPT - WATER DIVISION	At-Risk
RANCHO NIPOMO WATER COMPANY	44	45	Not At-Risk	Routed	NIPOMO COMM SERVICES DIST	Not At-Risk
RANCHO SALINAS MBWC	50	20	Not At-Risk	Routed	CITY OF PASO ROBLES WATER DIVISION	Not At-Risk
RESTHAVEN MOBILE HOME PARK	99	80	Failing	Routed	CITY OF PASO ROBLES WATER DIVISION	Not At-Risk
RIM ROCK WATER COMPANY	55	25	Failing	Routed	NIPOMO COMM SERVICES DIST	Not At-Risk
S & T MUTUAL WATER COMPANY	591	179	At-Risk	Intersects with Receiving System	GOLDEN STATE WATER COMPANY - LOS OSOS	At-Risk
SAN SIMEON CSD	462	206	At-Risk	Routed	CAMBRIA COMM SERVICES DIST	Not At-Risk
SANTA YSABEL RANCH MWC	238	152	Not At-Risk	Routed	CITY OF PASO ROBLES WATER DIVISION	Not At-Risk
SLO CSA NO. 12 - AVILA BEACH	0	20		Routed	SAN MIGUELITO MWC	Not At-Risk
SLO CSA NO. 16 - SHANDON	1085	362	Potentially At-Risk	> 3 Miles		
SLO CWD NO. 10 - CAYUCOS WTP	0	3	Not Assessed	Intersects with Receiving System	MORRO ROCK MUTUAL WATER CO	Not At-Risk
SPANISH LAKES MUTUAL WATER CO	125	45	Not At-Risk	Routed	CITY OF PASO ROBLES WATER DIVISION	Not At-Risk
STRASBAUGH, INC	200	1		Routed	GOLDEN STATE WATER COMPANY - EDNA	Potentially At-Risk
TALLEY FARMS LABOR HOUSING	75	22		> 3 Miles		
TERRA DE ORO WATER COMPANY	38	17	Not At-Risk	Routed	CITY OF ARROYO GRANDE UTILITIES DIVISION	Not At-Risk
TIGER WATER SUPPLY	1600	3	Potentially At-Risk	Intersects with Receiving System	SAN LUIS OBISPO WATER DEPARTMENT	Not At-Risk
TOYOTA SAN LUIS OBISPO	57	1		Intersects with Receiving System	SAN LUIS OBISPO WATER DEPARTMENT	Not At-Risk
VARIAN RANCH MUTUAL WATER	106	49	Not At-Risk	> 3 Miles		
WALNUT HILLS MUTUAL WATER CO	486	23	Not At-Risk	Routed	CITY OF PASO ROBLES WATER DIVISION	Not At-Risk
WOODLAND PARK MUTUAL WATER CO	488	163	Failing	Routed	WOODLANDS DEVELOPMENT	Not At-Risk



# SSWS- Joining Systems

27 State Small Water Systems

8 SSWS meet “Joining System” criteria-

- intersect
- route <0.38 miles
- route intersect <0.25 miles

JOINING SMALL WATER SYSTEM INFORMATION				RECEIVING SYSTEM INFORMATION	
Joining State Small Water System Name	Population Served	Service Connections	Analysis Results Category	Receiving Water System Name	Safer Status
ADELAIDE ESTATES	15	5	> 0.38 Miles		
BLACK LAKE CANYON WATER SUPPLY	20	8	> 0.38 Miles		
BLUE SKY WATER ASSOCIATION	24	13	> 0.38 Miles		
CALLENDER WATER ASSOCIATION	18	7	Near to Joining/Receiving System Route (0.25mi)	GOLDEN STATE WATER COMPANY-CYPRESS RIDGE	Not At-Risk
CIRCLE II	0	10	> 0.38 Miles		
DEER VALLEY	24	8	> 0.38 Miles		
EDNA RANCH - WEST	0	12	> 0.38 Miles		
HERITAGE LANE WATER ASSOCIATION	0	8	> 0.38 Miles		
HIDDEN HILLS MOBILODGE	22	12	Near to Joining/Receiving System Route (0.25mi)	SAN LUIS OBISPO WATER DEPARTMENT	Not At-Risk
JESPERSEN RANCH	20	0	> 0.38 Miles		
KANAWYER, RAYMOND	1	4	Routed	NIPOMO COMM SERVICES DIST	Not At-Risk
LA COLONIA WATER ASSOCIATION	0	6	> 0.38 Miles		
LA MESA WATER COMPANY	18	6	Intersects with Receiving System	GOLDEN STATE WATER COMPANY-CYPRESS RIDGE	Not At-Risk
MAXWELLTON MUTUAL WATER	24	9	> 0.38 Miles		
MUTUAL WATER COMPANY INC AKA: SLO TRIO	0	8	> 0.38 Miles		
NEWSOM SPRINGS MUTUAL WATER CO	24	10	> 0.38 Miles		
NORTH RIVER ROAD WATER SYSTEM	0	5	> 0.38 Miles		
NUNES WATER COMPANY	24	12	Intersects with Receiving System	GOLDEN STATE WATER COMPANY-CYPRESS RIDGE	Not At-Risk
POLY RANCH WATER SUPPLY	0	7	> 0.38 Miles		
QUIET OAKS WATER CO	0	8	> 0.38 Miles		
RANCHO CABALLO MBWC	0	13	Near to Joining/Receiving System Route (0.25mi)	SAN LUIS OBISPO WATER DEPARTMENT	Not At-Risk
RANCHO OAKS MOBILE PARK	19	10	> 0.38 Miles		
Rhodes Rancho	0	7	> 0.38 Miles		
SAN LUIS WATER & POWER	24	12	> 0.38 Miles		
SWEET SPRINGS MOBILE PARK	24	14	> 0.38 Miles		
True Water Supply	0	7	Routed	WOODLANDS DEVELOPMENT	Not At-Risk
VISTA DE LAS FLORES WATER	24	12	Intersects with Receiving System	GOLDEN STATE WATER COMPANY-CYPRESS RIDGE	Not At-Risk



# Domestic Wells

15,178 total domestic wells

13,550 domestic wells not within a grouping

- 1,531 wells that intersect with receiving system (green)
- 1,609 wells that are within 0.38 miles of receiving system
- 493 wells that are within 0.38 miles route to a receiving system

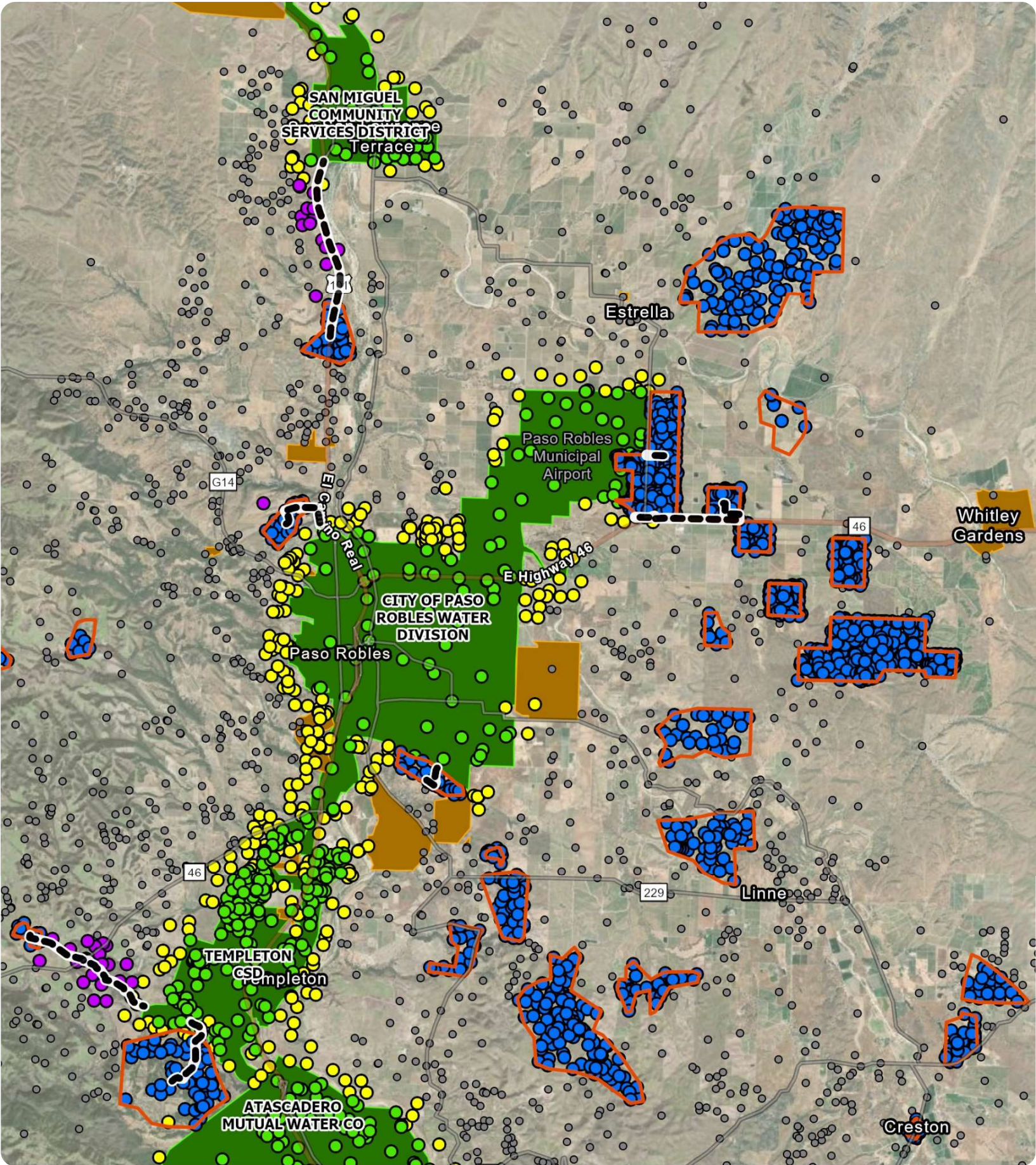
1,628 wells that are in groups that could be routed <3 miles to a “Receiving” system

13 groupings route connect; 4 routes connect additional wells

*Map for Reference Purposes Only:*

*Data is provisional and has not been verified for accuracy. The County of San Luis Obispo does not warrant the accuracy of the data and is not responsible for damages resulting from its use.*

- Potential New Systems Made by Domestic Wells
- Domestic Wells Intersecting with Receiving System
- Domestic Wells Near Receiving System (0.38 mi)
- Domestic Wells Near Route to Receiving System (0.38 mi)
- Other Domestic Wells
- Potential Domestic Well Aggregated System
- Potential Receiving System Area Boundaries
- Potential Joining System Area Boundaries
- Potential Routes to Receiving System





# Next Steps

- Prioritize Consolidation
- 1. Meets Physical Criteria (Distance)
  - 2. Meets Funding Viability Criteria (Cost)
  - 3. Interested Water Systems
  - 4. Interested Private Well Owners
  - 5. Wells within Priority Groundwater Basins

- Next Steps:
- 1. LAFCO workshop #2- April
  - 2. Draft System Consolidation Plan- June
  - 3. WRAC Meeting #2- June

	Jan-25	Feb-25	Mar-25	Apr-25	May-25	Jun-25	Jul-25	Aug-25	Sep-25
Risk Assessment									
Baseline Risk Assessment									
PWD/IWG Meeting #1: Risk Assessment									
Revised Baseline Risk Assessment									
SLO SB552 System Consolidation Plan									
PWD/IWG Meeting #2: Vision and Mission Workshop									
LaFCO Workshop									
WRAC Meeting #1: Vision and Mission Confirmation									
GIS Analysis									
WRAC Meeting #2: Draft SB552 SCP									
SB552 System Consolidation Plan Summary									
SB552 System Consolidation Plan									
County DRP Support									
Public Works Department Meetings									
2024 MJHMP/County DRP Support									
Task 4. CSP Administration									

Legend:  
▲ = Draft SB552 SCP  
★ = Final SB552 SCP



---

# Thank you

---