

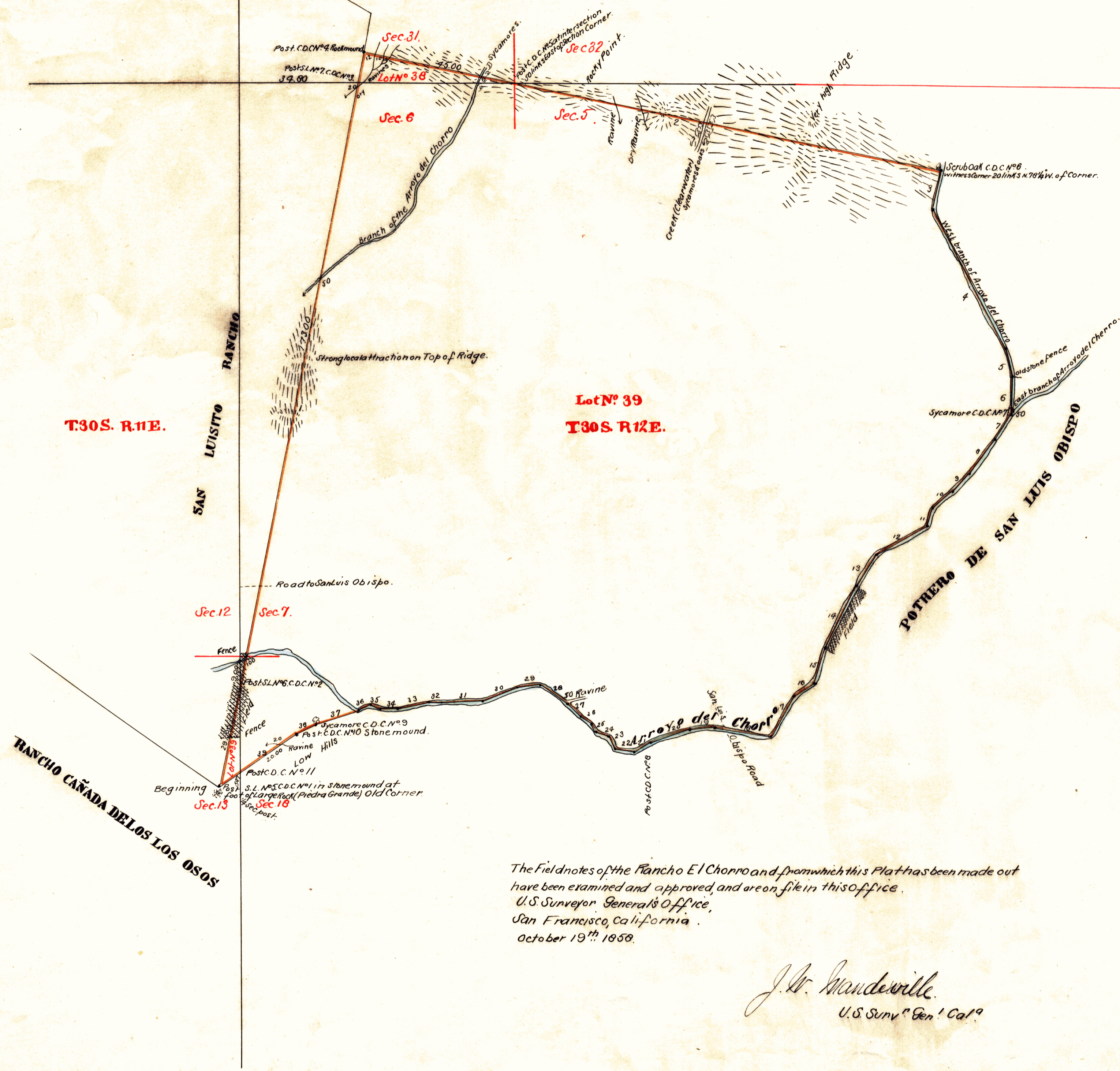
G.J.
O.K.
T.A.B.

T29S. R.12E.

T30S. R.11E.

Lot N° 39
T30S. R.12E.

PLAT
of the
RANCHO EL CHORRO
Finally confirmed to
JUAN WILSON
Surveyed under Instructions from the
U. S. SURVEYOR GENERAL
by
Brice M. Henry Dep. Surv.
March 1858.
Containing 3,166²⁹/₁₀₀ Acres.
Scale 20 Chains to 1 Inch
Variation 14° 5' East.



Boundaries.

N°	Course	Distance	N°	Course	Distance
1	N. 11 1/4° E.	210.70	21	S. 60° W.	5.50
2	S. 78 1/4° E.	170.00	22	N. 78 1/2° W.	6.00
3	S. 11 3/4° W.	12.10	23	N. 20° 20' W.	2.95
4	S. 28° E.	44.00	24	N. 70° W.	4.15
5	S. 14° E.	9.00	25	N. 28 1/4° W.	2.88
6	S. 0 1/4° E.	11.00	26	N. 54 1/2° W.	4.57
7	S. 28° W.	7.90	27	N. 50° 50' W.	6.48
8	S. 40° 50' W.	13.00	28	N. 52° 50' W.	6.78
9	S. 43 1/4° W.	7.00	29	S. 90° 40' W.	6.60
10	S. 47° 40' W.	7.44	30	S. 71° W.	11.67
11	S. 18 1/4° W.	6.00	31	S. 87 1/4° W.	11.64
12	S. 61° 50' W.	17.00	32	S. 87 1/2° W.	3.84
13	S. 29° W.	10.08	33	S. 75° 20' W.	8.32
14	S. 28° 5' W.	20.00	34	N. 69 1/2° W.	5.65
15	S. 16° W.	9.39	35	N. 84 1/2° W.	3.00
16	S. 52 1/2° W.	7.40	36	S. 60° W.	3.72
17	S. 27° W.	14.00	37	S. 72° W.	12.90
18	N. 78° W.	17.00	38	S. 59 1/4° W.	5.90
19	S. 82° W.	7.80	39	S. 56 1/4° W.	2.685
20	S. 72 1/4° W.	12.00			

The field notes of the Rancho El Chorro and from which this Plat has been made out have been examined and approved, and are on file in this office.
U. S. Surveyor General's Office,
San Francisco, California.
October 19th 1858.

J. W. Mandeville.
U. S. Survey Gen. Cal.

DEPARTMENT OF THE INTERIOR,
GENERAL LAND OFFICE,
Washington, D. C., Dec. 20, 1910.
I hereby certify that this is a true copy
of the plat of official survey of the lands
to which it relates, on file in this office.

H. W. [Signature]
Recorder, General Land Office.

O 402

K-13
328