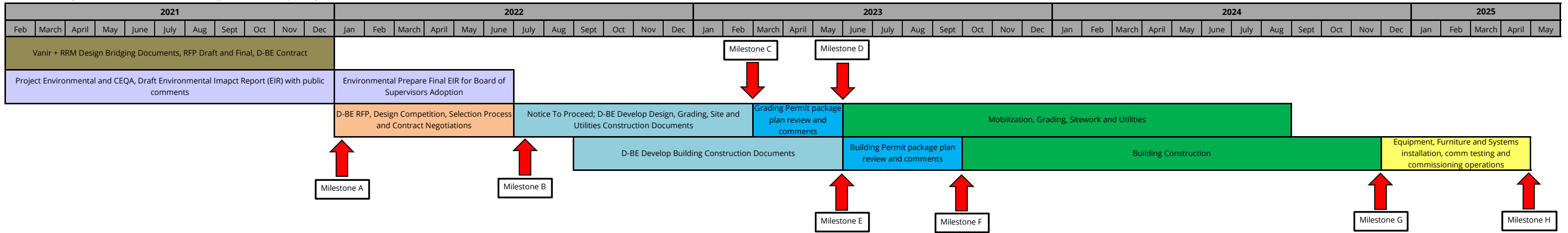
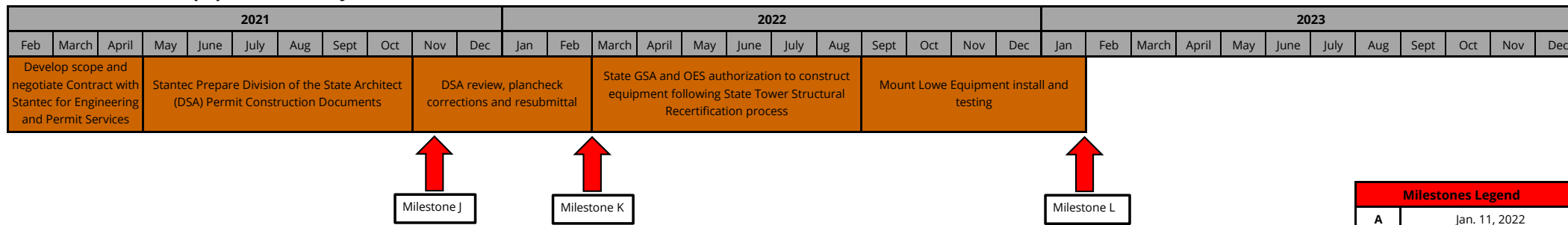


Templeton Sheriff and Fire Dispatch Facility Project Timeline Schedule



Mount Lowe Equipment Sub-Project Timeline Schedule



Milestones Legend		
A	Jan. 11, 2022	Board of Supervisors release of RFP to Pre-Qualified Design-Build Entities
B	mid-July 2022	Board of Supervisors Adopt EIR and Award Design Build Contract
C	early March 2023	Design-Build Entity prepare and submit Grading and Utilities permit package
D	early June 2023	Site Grading and Utilities permit approved, mobilization and Start of Construction
E	early June 2023	Design-Build Entity prepare and submit Building Structure permit package
F	end of September 2023	Building Structure permit approved; start Building Construction
G	end of November 2024	Project Substantial Completion
H	end of April 2025	'Go-Live' cutover from existing dispatch facilities, closeout, operations & maintenance
J	middle of November 2021	Stantec prepare application and submit for DSA permit
K	end of February 2022	Mount Lowe Tower Equipment DSA Permit approved
L	end of January 2023	Substantial Completion of Mount Lowe Equipment

Project Milestone Timeline for County of San Luis Obispo Co-Located Dispatch Facility Templeton, CA

14-Dec-21

