

BOB JONES TRAIL

FARMLAND CONFLICT RESOLUTION



January 2024

ACKNOWLEDGMENTS

COUNTY OF SAN LUIS OBISPO
PARKS AND RECREATION DEPARTMENT



Document prepared by RRM Design Group in
conjunction of trail plans developed by Wallace Group





1	INTRODUCTION	1
1.1	INTRODUCTION	
2	TRAIL SEPARATION AND ADVISORY SIGNAGE	3-5
2.1	INTRODUCTION	
2.1.1	TRAIL PLACEMENT AND FENCING	
2.1.2	ADVISORY SIGNAGE	
2.1.3	NOTICES POSTED	
3	PESTICIDE SPRAYING	7-8
3.1	INTRODUCTION	
3.1.1	SAN LUIS OBISPO COUNTY AGRICULTURAL COMMISSION	
3.1.2	NOTICES POSTED	
3.1.3	ABILITY FOR TRAIL CLOSURES	
4	BURN ACTIVITY AND GENERAL AGRICULTURAL OPERATIONS	11
4.1	INTRODUCTION	
4.1.1	NOTICES POSTED	
4.1.2	ABILITY FOR TRAIL CLOSURES	
5	LEGAL PROTECTIONS FOR ADJACENT LAND OWNERS	13
5.1	PROTECTIONS FROM CLAIMS FOR ADJACENT LANDOWNERS	
6	DETAILS	15-21

1 | INTRODUCTION

FARMLAND CONFLICT RESOLUTION





1 INTRODUCTION

1.1 INTRODUCTION

From the onset of the Bob Jones Trail planning process, a key focus was to identify and resolve agricultural land use compatibility issues. In response to expressed concerns, the following memorandum presents farmland conflict reduction measures consistent with the Mitigation Measures 2.2-3a, 3b, and 3d of the Bob Jones Pathway Final EIR's Mitigation Monitoring and Reporting Program (MMRP). Some proposed measures are design related and other measures are operational in nature (a function of the on-going management of the Trail).

The set of measures are based on measures developed for public multiuse trails in California with similar farmland adjacency concerns. The appropriateness and/or effectiveness of the measures presented below, when implemented in their entirety, are intended to minimize impacts to agricultural operators and adjacent landowners.



2 | TRAIL SEPARATION AND ADVISORY SIGNAGE

FARMLAND CONFLICT RESOLUTION





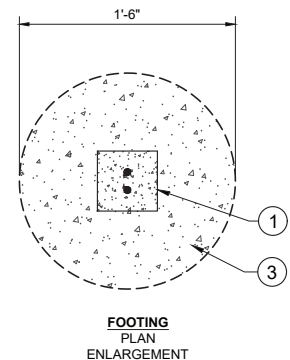
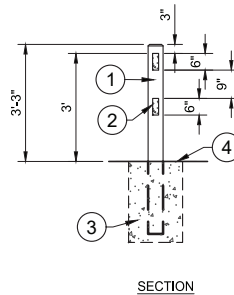
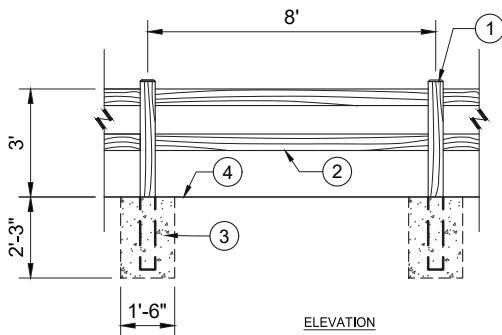
2 TRAIL SEPARATION AND ADVISORY SIGNAGE

2.1 INTRODUCTION

The following measures are intended to minimize interaction and impacts between trail users, agricultural operators, and land owners. Fencing, advisory signage, and notices will all work together in reducing conflict.

2.1.1 TRAIL PLACEMENT AND FENCING

- Wherever possible, the Trail will be located as far away from adjacent private property as feasible.
- Fencing will be installed to separate adjacent farmland and landowners from the Trail and to keep Trail users and their pets out of the adjacent private property.
- Fencing type and height will vary depending on the adjacent land use.
- Fencing design will include locking access gates for agricultural equipment and personnel, and livestock to cross the Trail when agricultural operations are under way.
- Agricultural access gates will be located on a case-by-case basis in consultation with the adjacent agricultural operator.



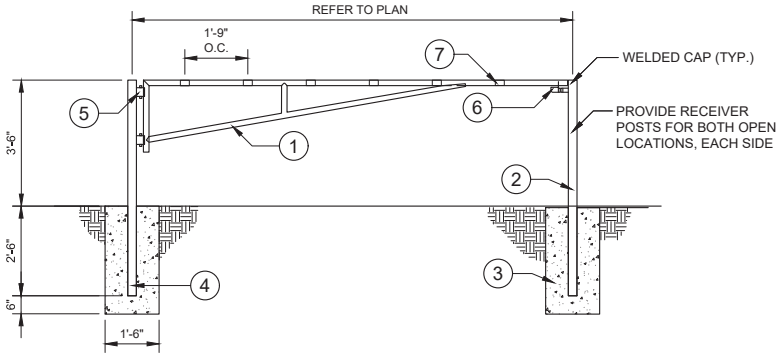
LEGEND:

- ① PRECAST CONCRETE POST - 5"X5"
- ② PRECAST CONCRETE RAIL
- ③ CONCRETE FOOTING
- ④ FINISHED GRADE

① PRECAST CONCRETE TWO RAIL FENCING EXAMPLE

323131-03

Please note these details are not to scale and for construction. Please refer to the construction documents by Wallace Group for all construction details related to the Bob Jones Trail.



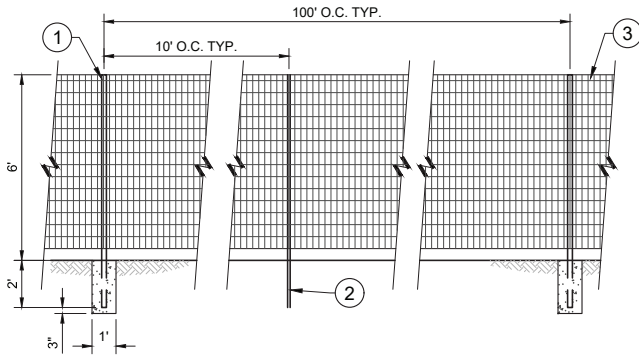
LEGEND

- ① 1 7/8" OD GALVANIZED STEEL (WELD ALL JOINTS)
- ② 1-7/8" OD GALVANIZED STEEL POST WITH CAP AND SUPPORTS FOR GATE. GATE TO HOLD IN STABLE POSITION WITHOUT LOCK.
- ③ CONCRETE FOOTING
- ④ 6" GALVANIZED STEEL PIPE POST WITH WELDED CAP.
- ⑤ WELDED HEAVY DUTY HINGE (PROVIDE SUBMITTAL FOR APPROVAL)
- ⑥ WELDED CHAIN AND LOCK TAB
- ⑦ 4" WIDE YELLOW REFLECTION TAPE, WRAPPED ALL AROUND, TYP.

NOTE:
A. ALL GALVANIZED PIPE SHALL BE SCHEDULE 80.

2 MANUAL SWING GATE EXAMPLE

323118-40



NOTES:

- A. ATTACH FENCE FABRIC TO T-POSTS WITH T-POST CLIPS AT 12" O. C.
- B. ATTACH FENCE FABRIC TO PIPE POSTS WITH 9 GA. STEEL TIES AT 12" O.C.
- C. FENCE FABRIC AND STEEL POSTS SHALL BE HOT-DIPPED GALVANIZED.
- D. PIPE POST FOOTING SHALL BE 3,000 PSI CONCRETE.

LEGEND:

- ① 2-3/8" BY 8' STEEL PIPE POST
- ② 8' TALL STEEL T-POST
- ③ 2" X 4" X 6" NO-CLIMB 12.5 GA. STEEL FENCE FABRIC

4 NO-CLIMB WIRE MESH FENCE EXAMPLE

323126-04

Please note these details are not to scale and for construction. Please refer to the construction documents by Wallace Group for all construction details related to the Bob Jones Trail.



2.1.2 ADVISORY SIGNAGE

- Signage stating “No Trespassing Allowed” will be installed along the trail at regular intervals.
- Additional signage informing Trail users not to litter, glean agriculture crops, or touch, harass or feed livestock will be installed in conspicuous locations along the Trail.
- At agricultural machinery crossing locations, signs alerting Trail users of crossing machinery will be installed.



SEE DETAIL 5



SEE DETAIL 7



SEE DETAIL 4

2.1.3 NOTICES POSTED

- Trail entrance points will be posted with notices stating the Trail is adjacent to private property where there are active agricultural operations.
- Trail users will be advised to stay on the trail and what the ramifications are for trespassing.
- The County will adopt an ordinance for citation authority, by the County Sheriff’s rural enforcement unit, to issue citations to any persons trespassing on private property. Citation fines are to be set at a rate high enough to act as a deterrent (e.g fine of \$1,000). Park Ranger(s) will identify private property trespassing and notify the County Sheriff’s rural enforcement unit for enforcement of agricultural laws. The role of the Park Ranger(s) could be filled by additional County Parks Rangers, City of SLO rangers, SLO Land Conservancy staff, and/or other non-profit organizations (Central Coast Concerned Mountain Bikers, Friends of the Bob Jones Trail). Park Ranger(s) would be trained to perform the duties required to coordinate with the Sheriff’s rural enforcement unit.
- Users will be warned that use of the trail is at their own risk.



SEE DETAIL 9



SEE DETAIL 8



SEE DETAIL 10

3 | PESTICIDE SPRAYING

FARMLAND CONFLICT RESOLUTION





3 PESTICIDE SPRAYING

3.1 INTRODUCTION

The measures in this section are intended to reduce risk and provide safety measures during pesticide spraying.

3.1.1 SAN LUIS OBISPO AGRICULTURAL COMMISSION

The San Luis Obispo County Agricultural Commissioner’s office is responsible for issuing pesticide spraying permits and regulating the use of pesticides and other agricultural chemicals. As the regulating and enforcement entity for the County, the Agricultural Commissioner’s office will place no additional restrictions upon the agricultural operators because of the development of the adjacent Trail as long as pesticides and other agricultural chemicals are applied in compliance with the label, worker safety requirements, weather conditions, drift restrictions, and all other safety requirements as required by federal, state, and local laws.

Regarding post pesticide application re-entry provisions, as long as trail users are physically separated from the “treated areas” (defined as the treated foliage of the agricultural crop) by continuous fencing (or similar barrier), trail users will not subject to any pesticide re-entry provisions.

