

## 320184 Coring Investigation

Thursday, May 25, 2023

On site Matt Cooper and two employees from Chip Cooper Roofing to perform borings and patches. Mike McGuire from West Coast Safety to obtain ACM samples. ON SITE FOR COUNTY OF SAN LUIS OBISPO DANIEL AMBRIZ AND CLAYTON SHONG.

- Observe core sampling of roof in 4 locations.
- Document thickness and roof deck material as per photos below.
- Observe filling and patching of core sample areas.
- Cleaning of adjacent surfaces with acetone observed.
- Furring for void at core areas installed.
- Patches heat welded as per manufacture instructions.
- Patches pick tested.
- Additional caulking added to patch areas for secondary protection.

Observed MEP either tucked in metal roofing from top or tucked up into metal roofing from bottom. Recommendation to of observe/investigate all accessible areas for MEP to avoid damage during application of new roof system.

Confirm manufacturers recommendations for fastener, penetration, distance, and or thread count through metal roofing Deck.

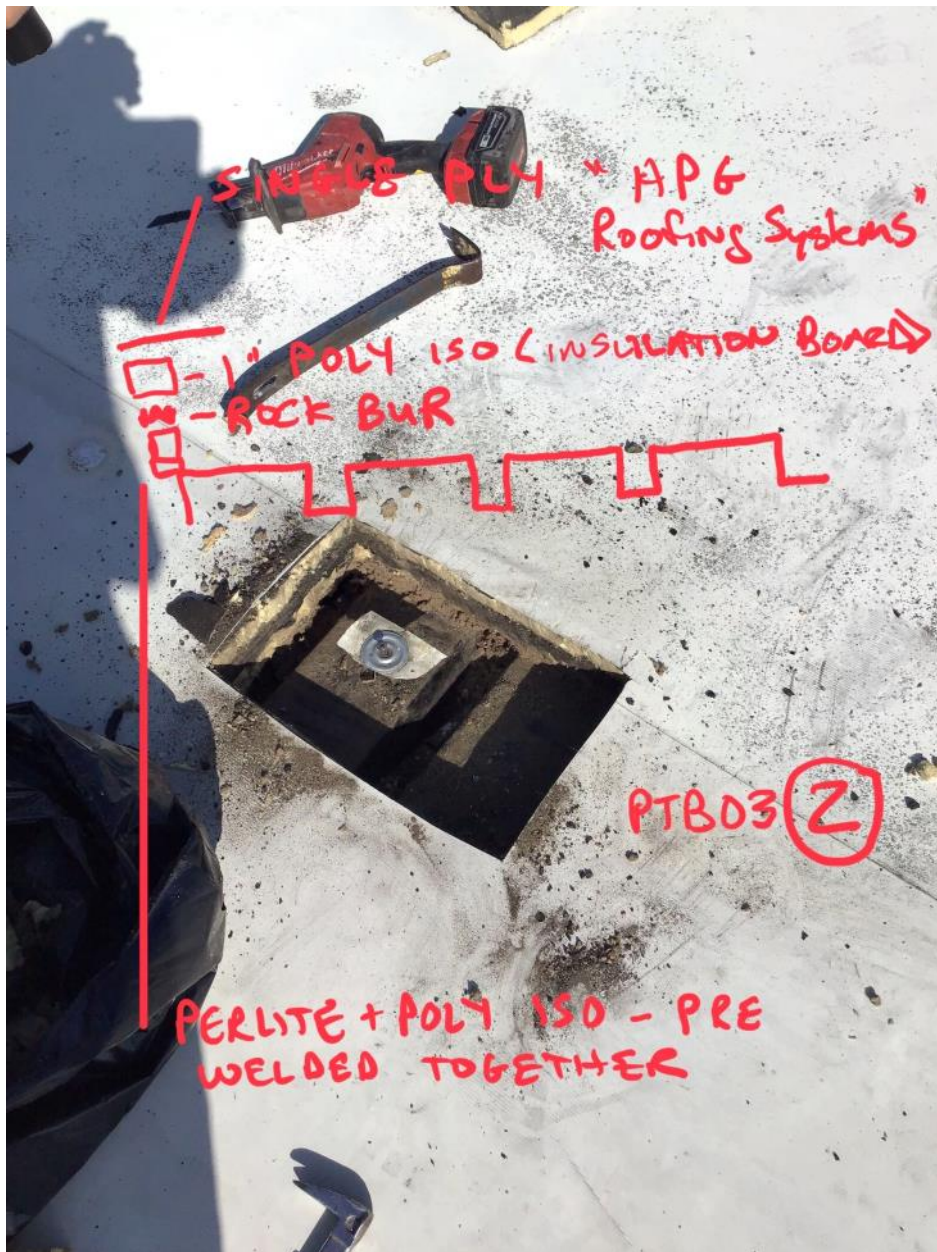


Location #1



Location #4

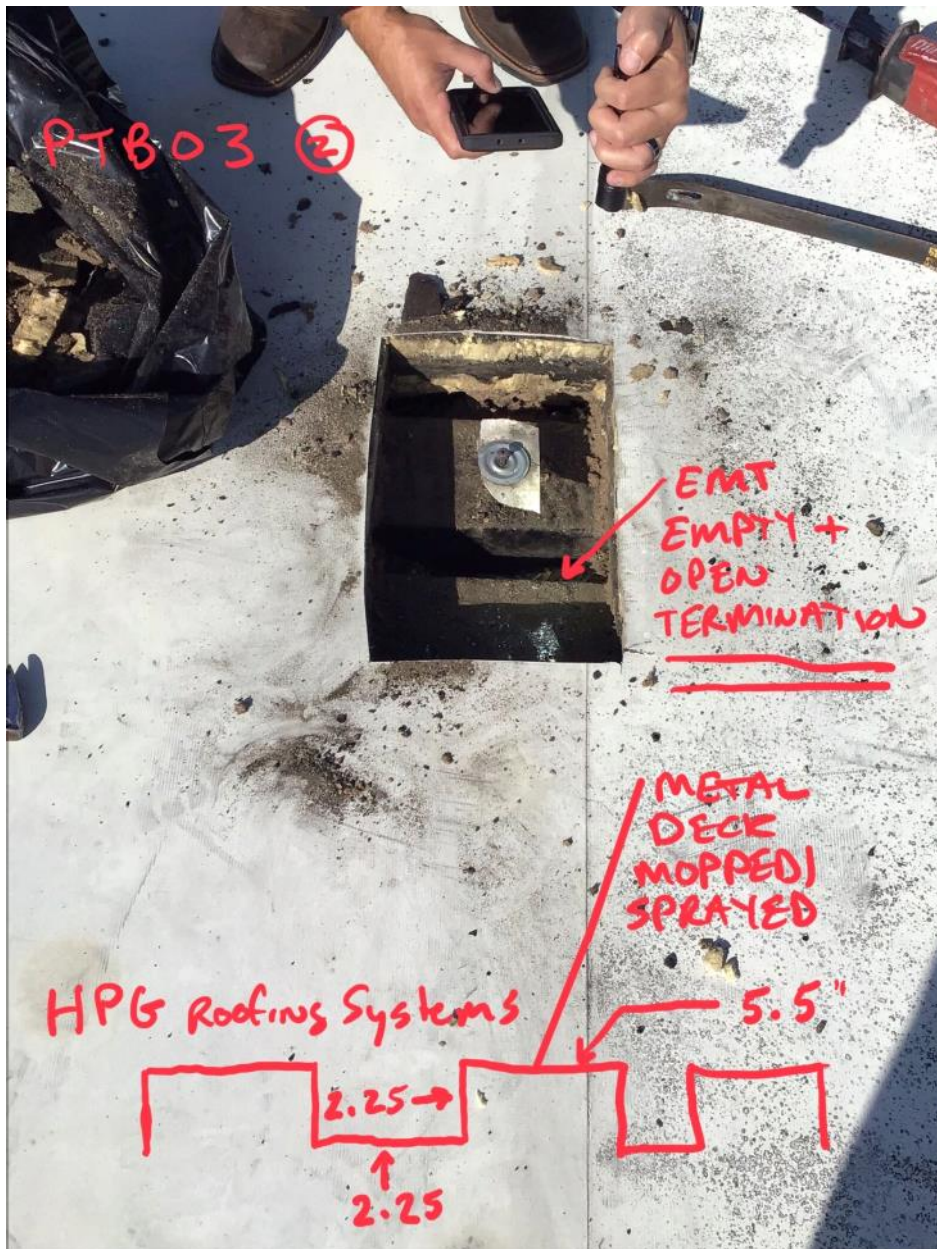




Location #2



Location #2



Location #2



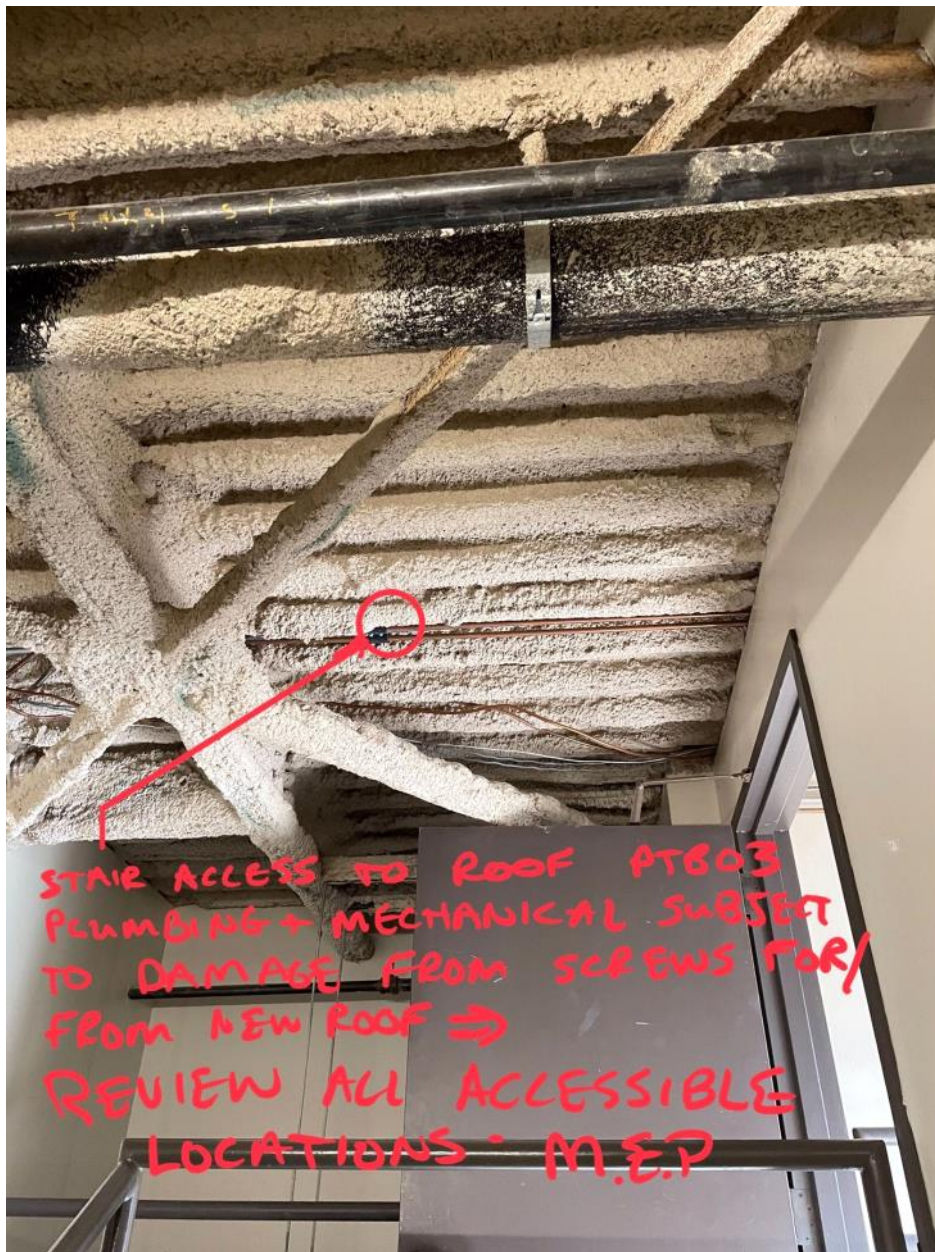


Location #3

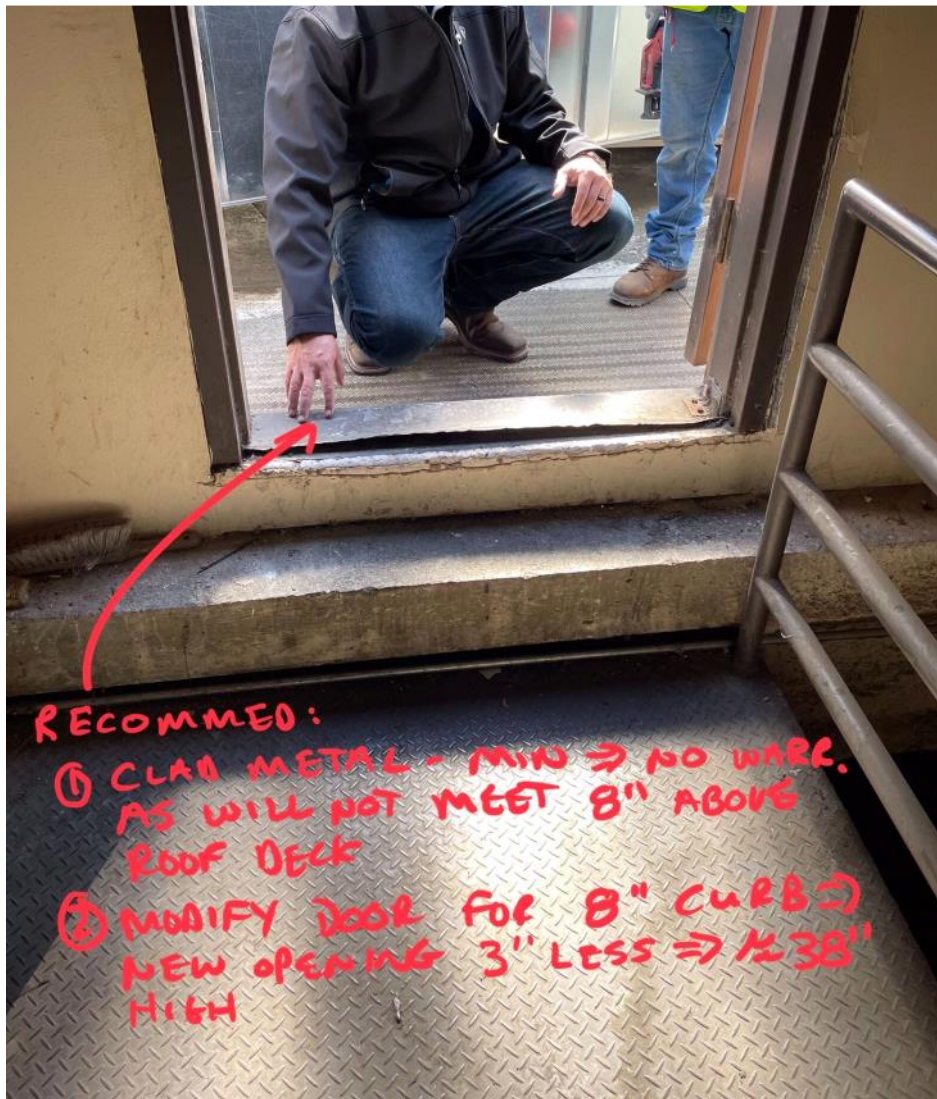


Location #3



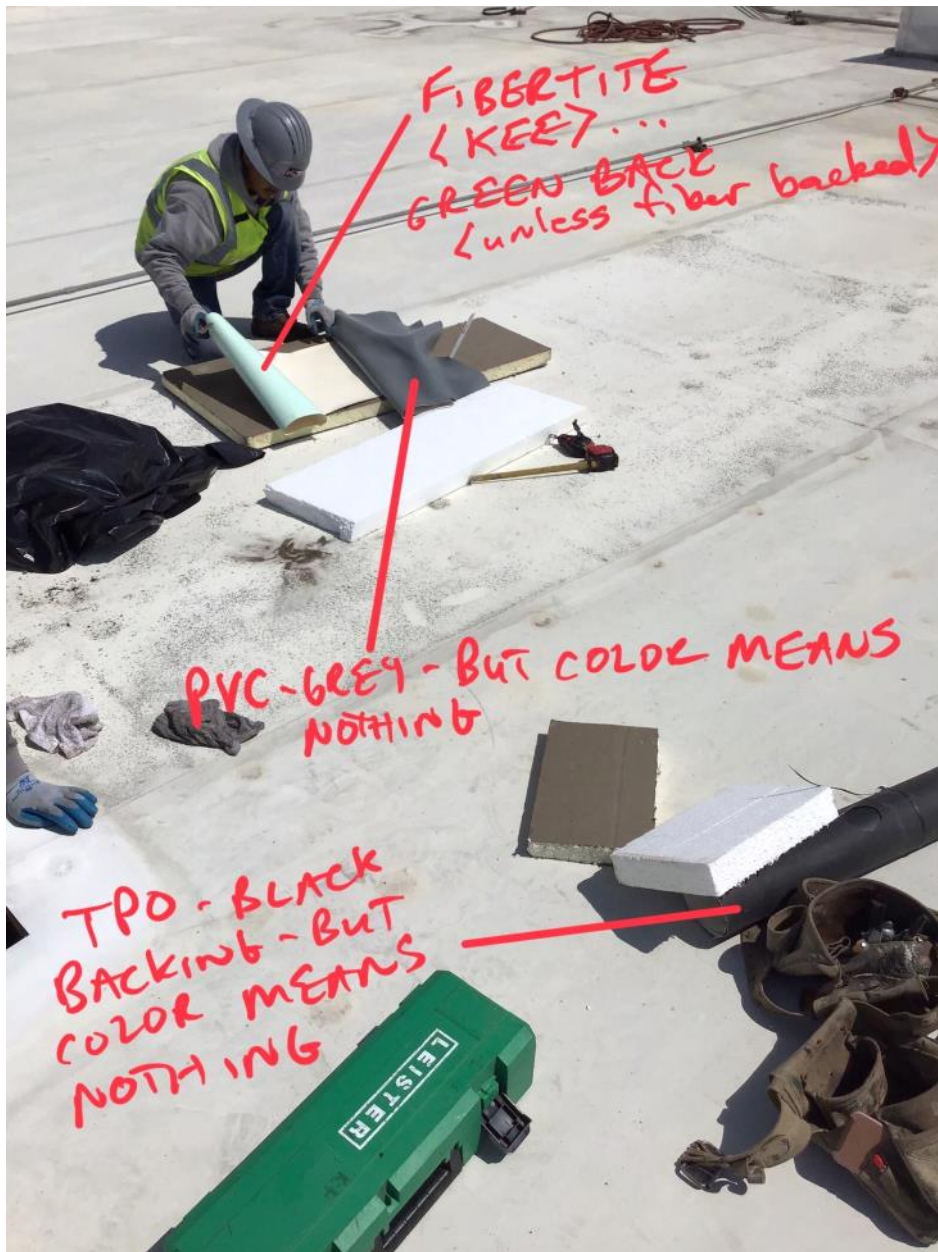


Ceiling in stairwell leading to Location #4



Doorway in stairwell leading to Location #4













Location #2 & 3



