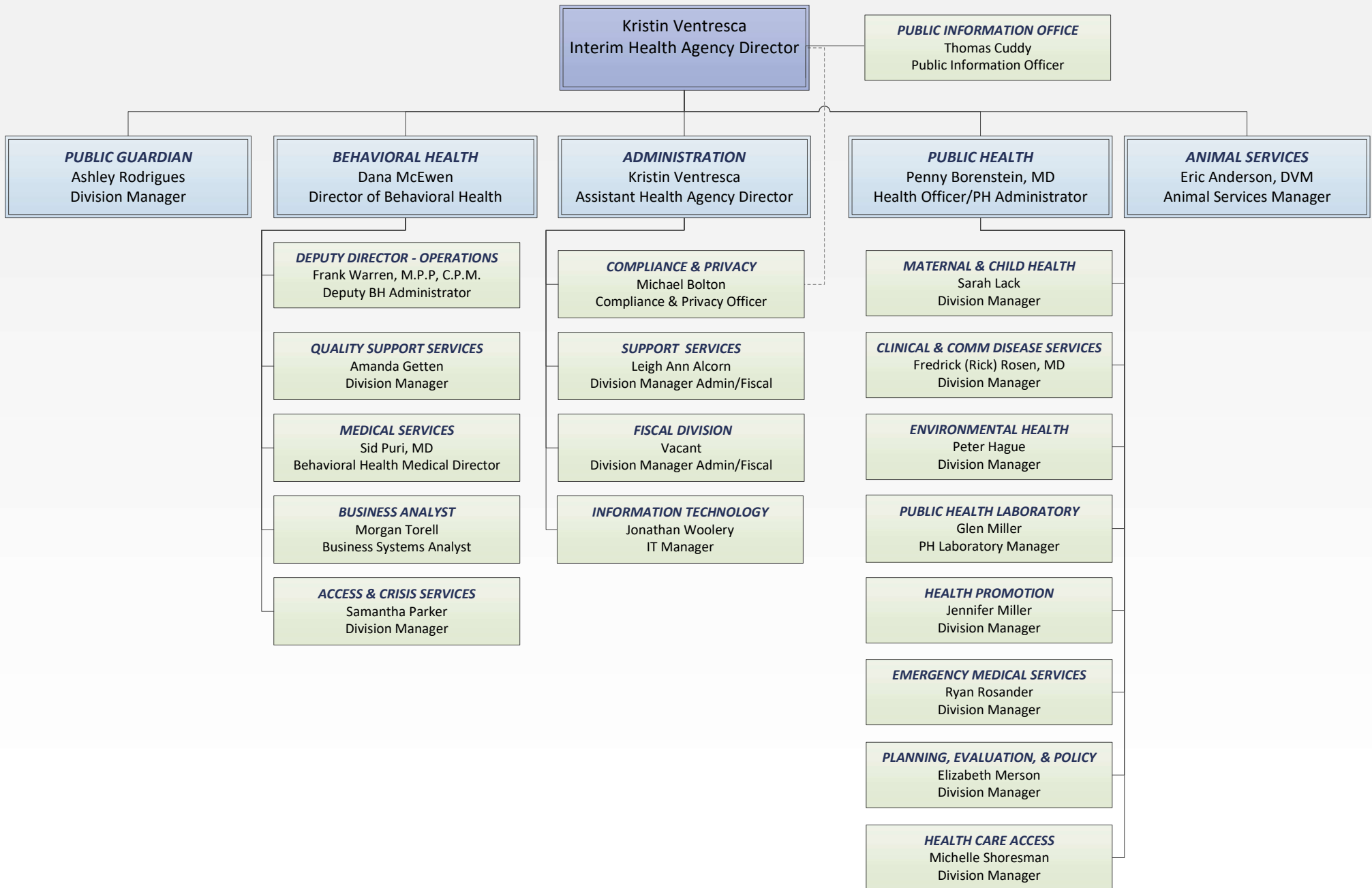
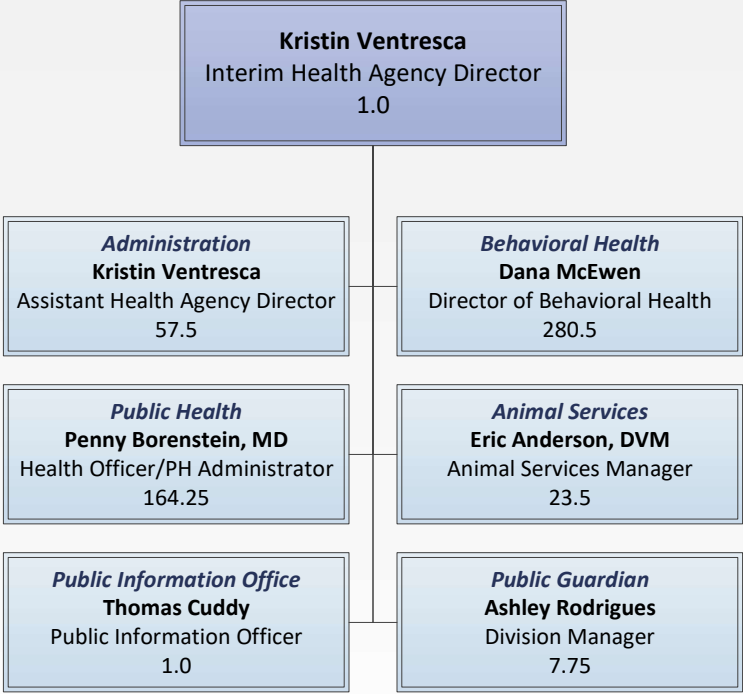


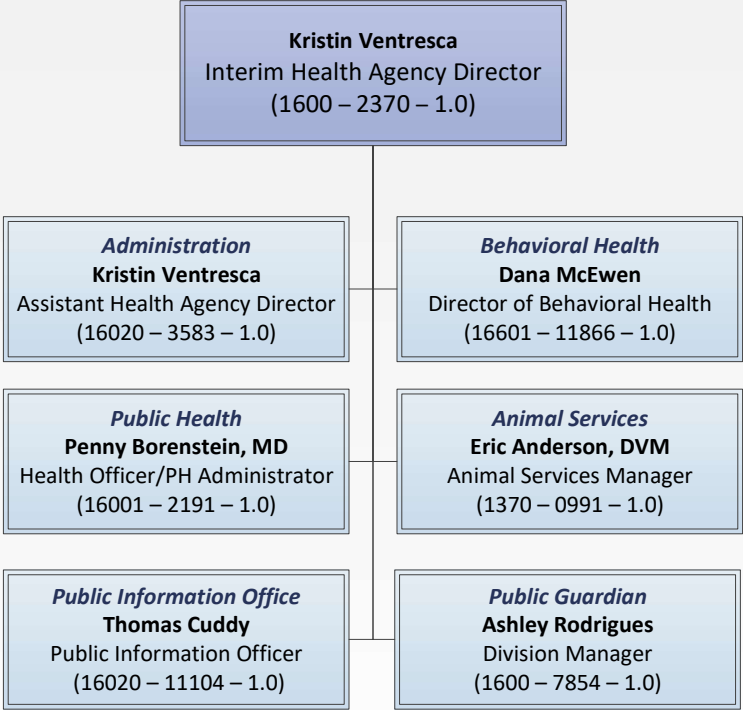
# Health Agency County of San Luis Obispo



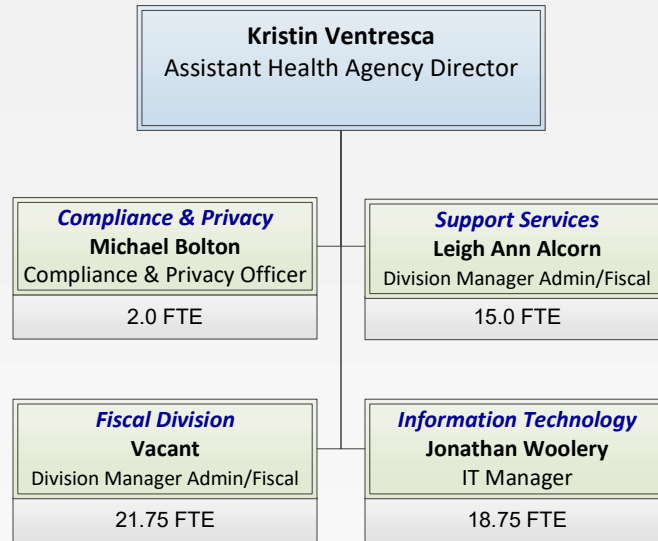
**Health Agency  
County of San Luis Obispo**



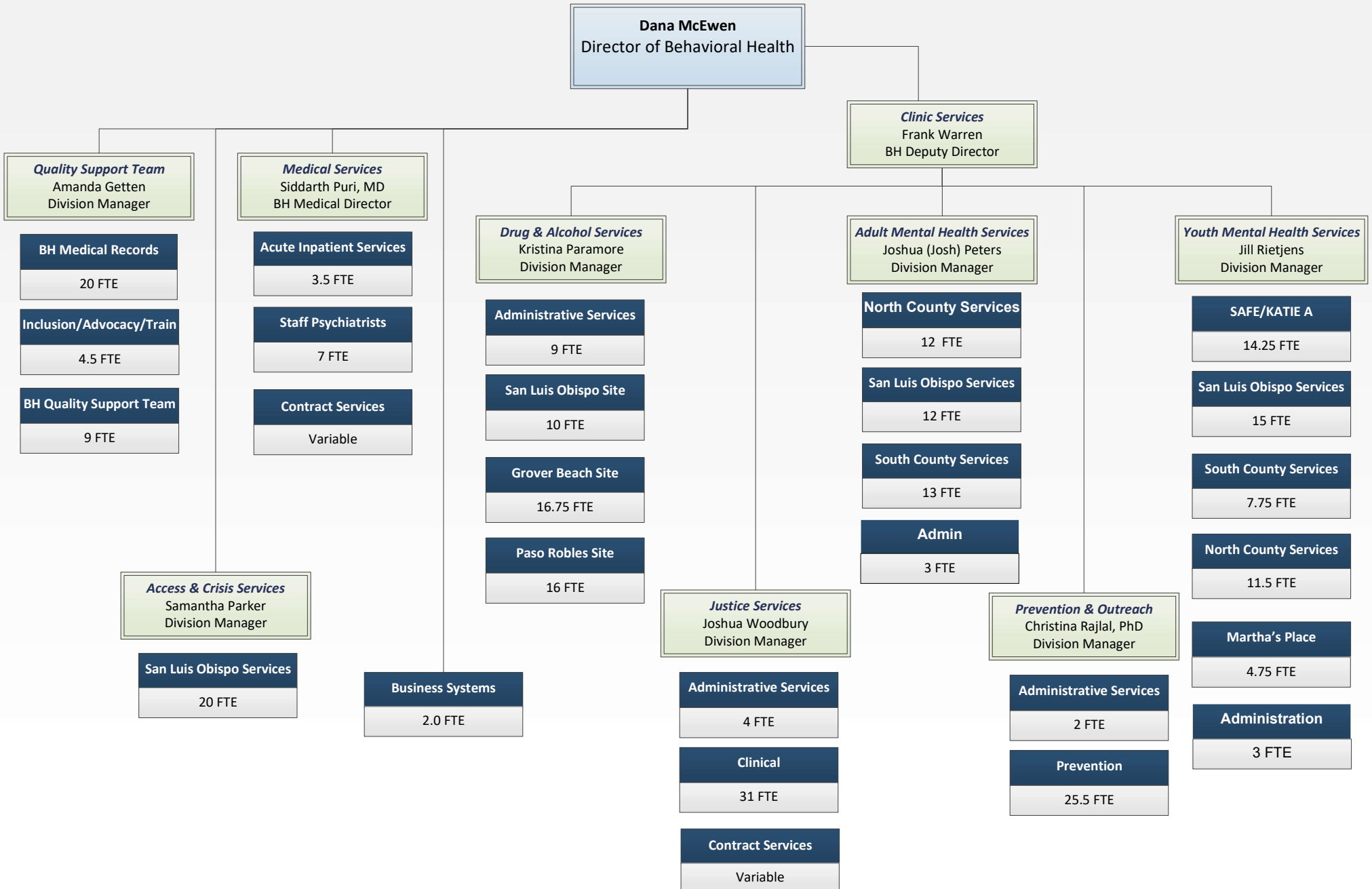
**Health Agency  
County of San Luis Obispo**



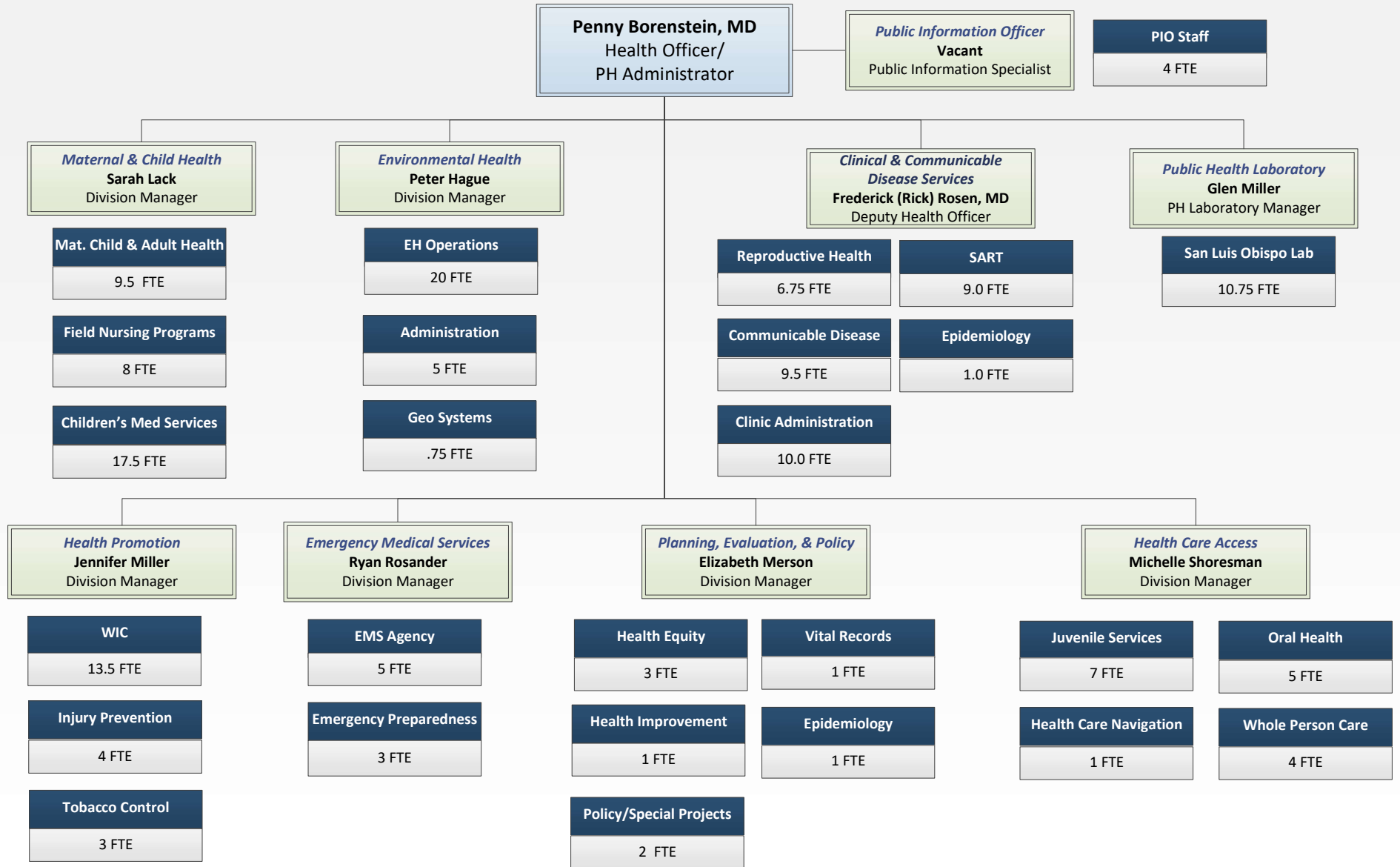
# Health Agency Administrative Department



# Health Agency Behavioral Health



# Health Agency Public Health

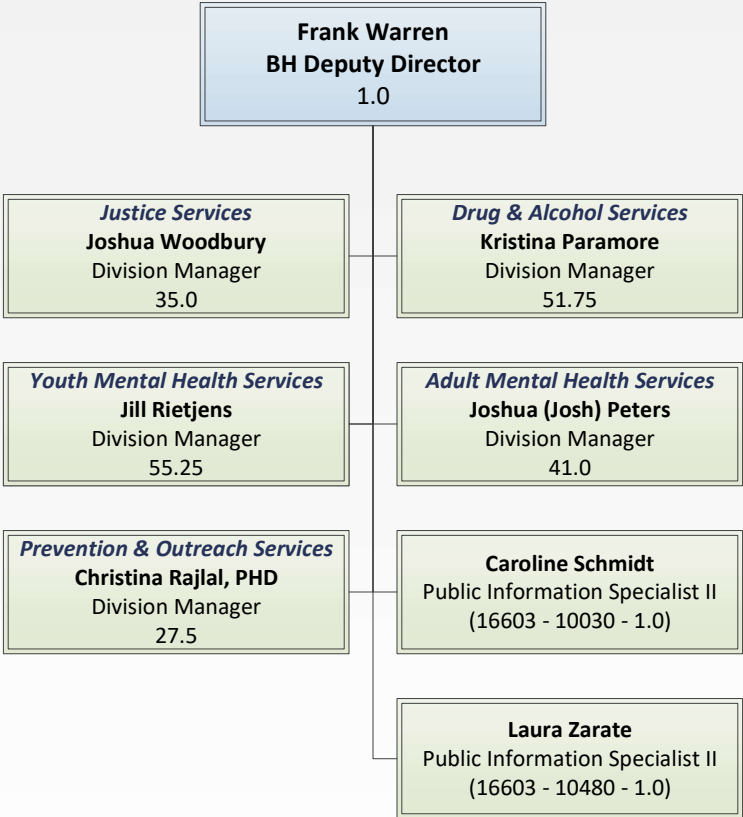


# Health Agency Administrative Department



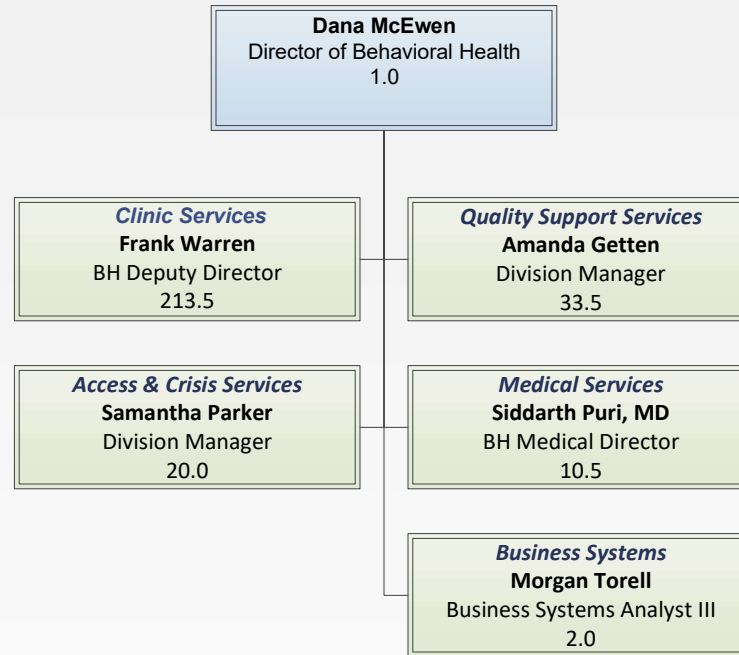
# Health Agency

## Behavioral Health Division Clinic Services



# Health Agency

## Behavioral Health Division

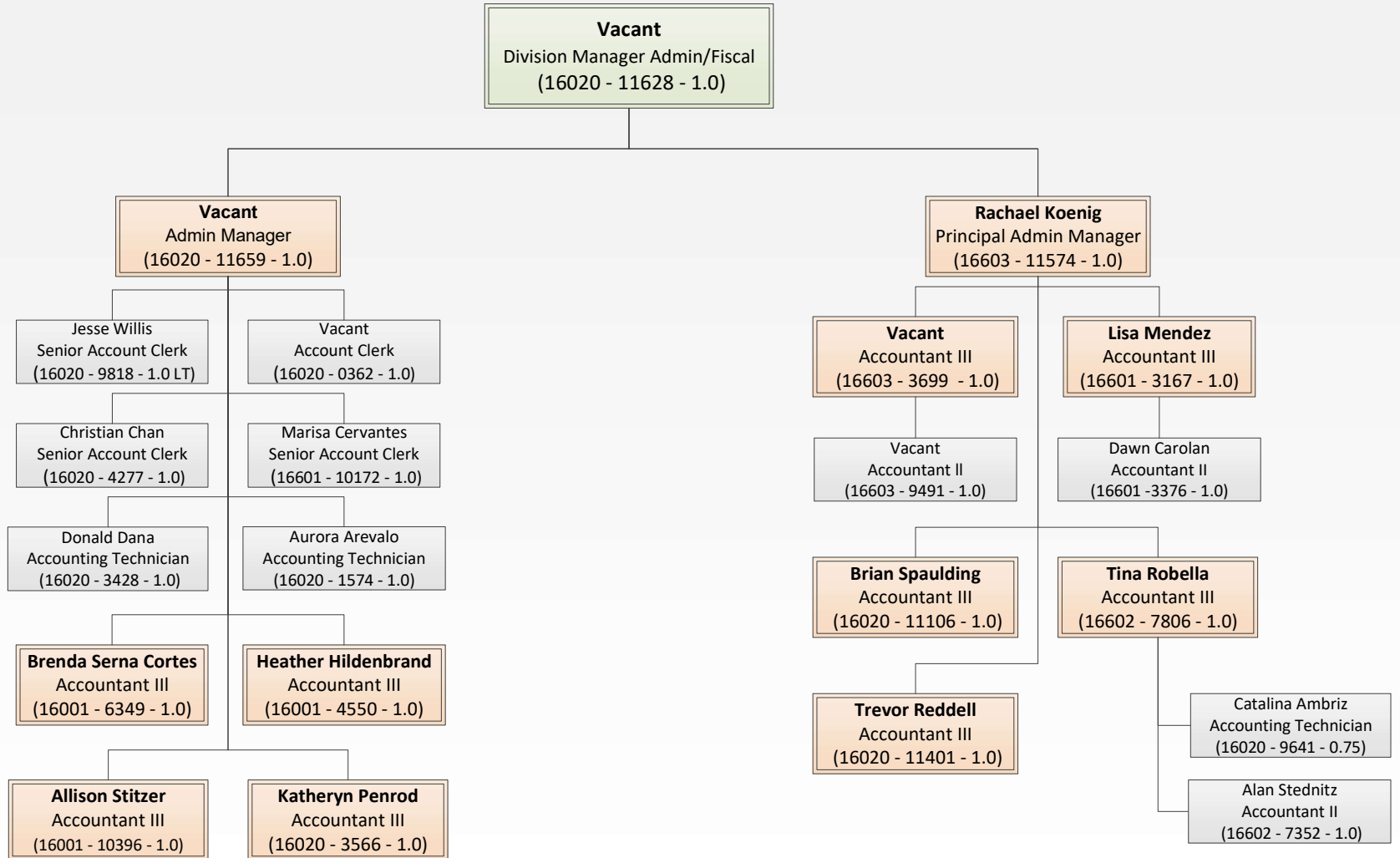


# Health Agency Public Health



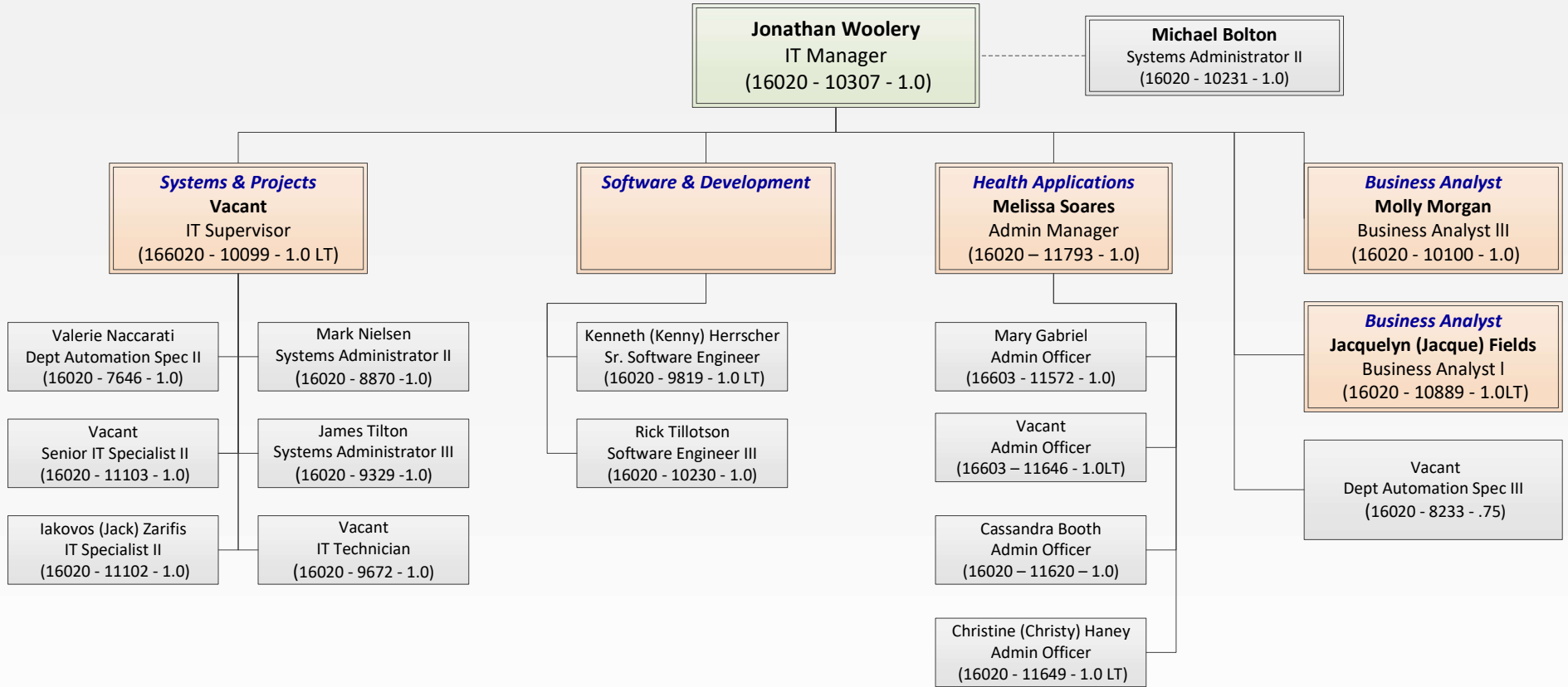
# Health Agency

## Administrative: Fiscal Division



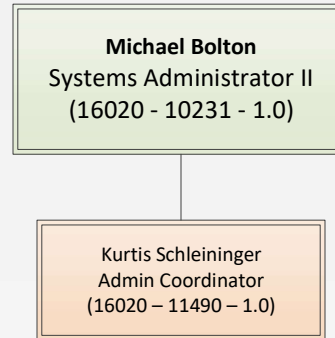
# Health Agency

## Administrative: Information Technology



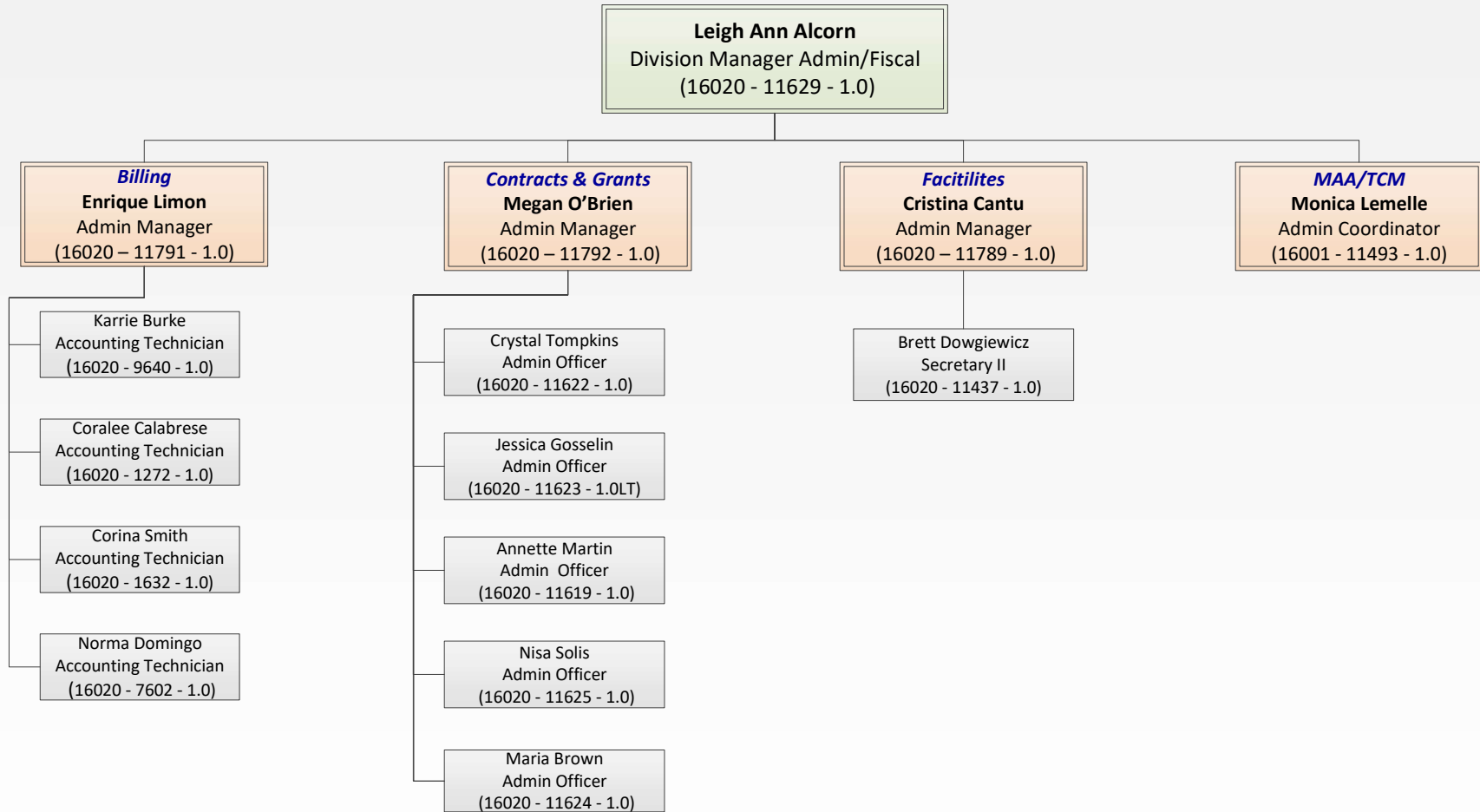
# Health Agency

## Administrative: Compliance & Privacy



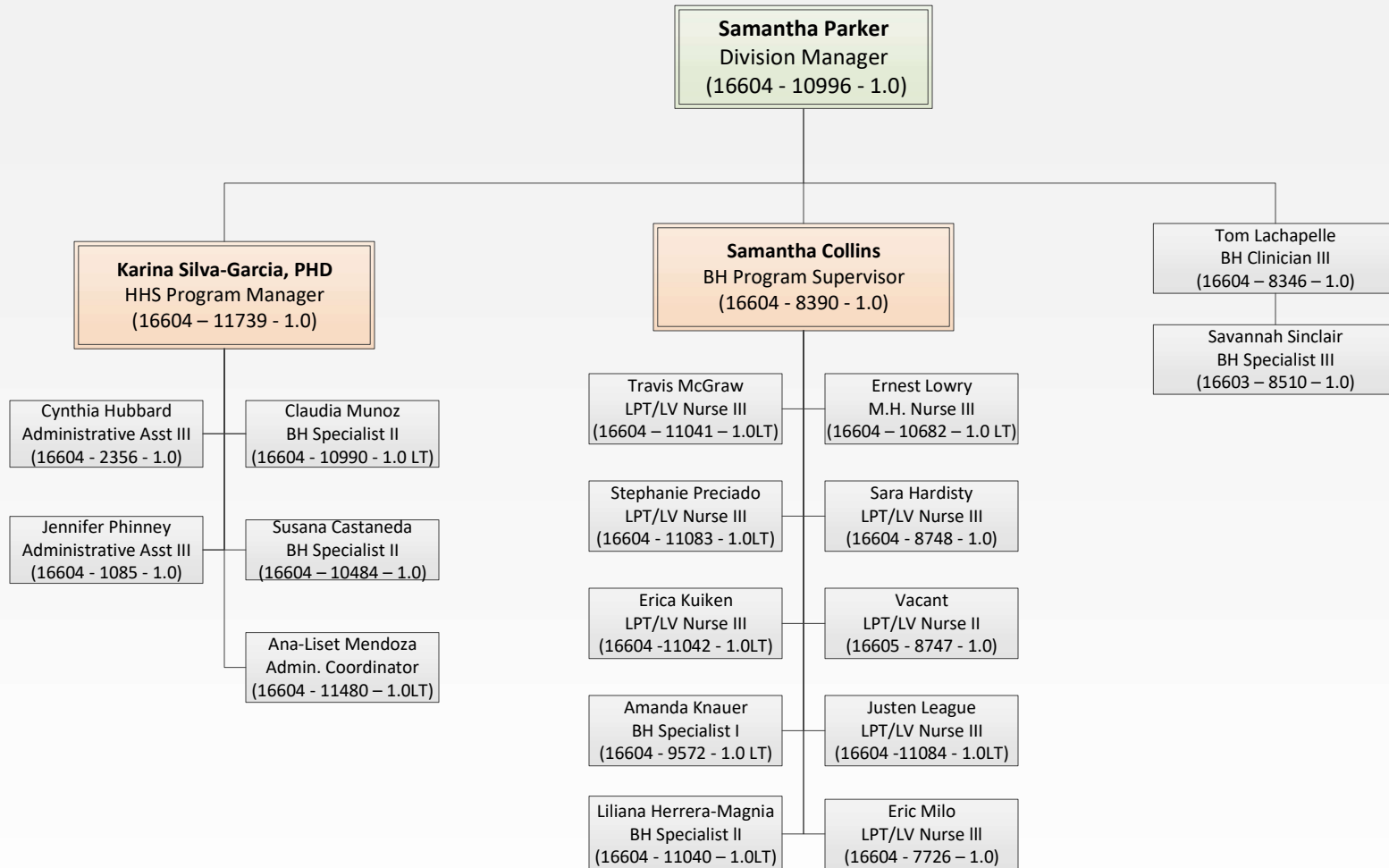
# Health Agency

## Administrative: Support Services



# Health Agency

## Behavioral Health: Access & Crisis Services



# Health Agency

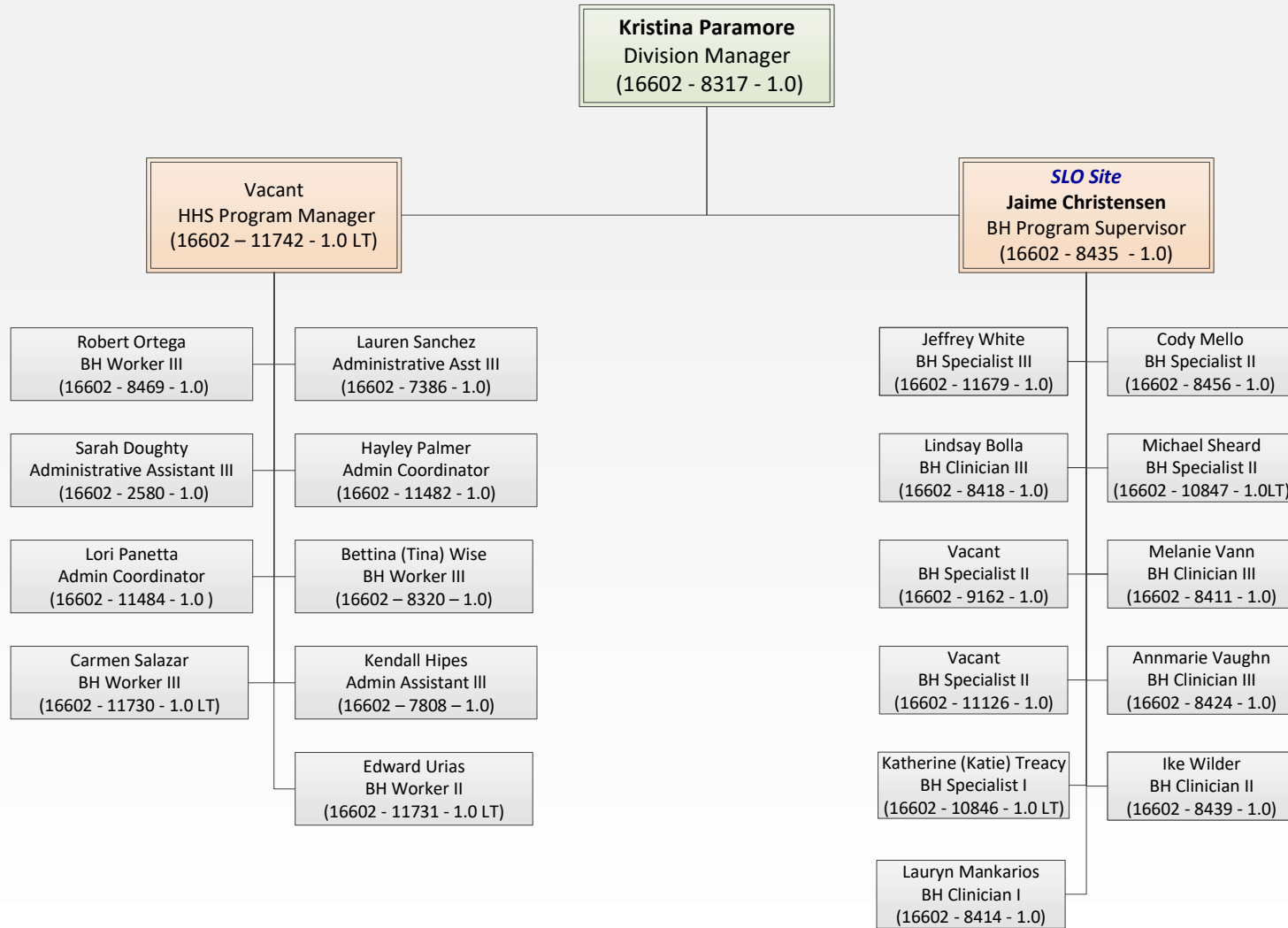
## Behavioral Health: Business Systems

**Morgan Torell**  
Business Systems Analyst III  
(16603 - 10482 - 1.0)

Josephine Price  
Admin Officer  
(16603 - 11573 - 1.0)

# Health Agency

## Behavioral Health: Drug & Alcohol Services



# Health Agency

## Behavioral Health: Drug & Alcohol Services

**Kristina Paramore**  
Division Manager  
(Continued)

**Paso Robles Site**  
**Kim Mott**  
BH Program Supervisor  
(16602 - 8433 - 1.0)

**Paso Robles Site**  
**Alexiis Figueroa**  
BH Program Supervisor  
(16602 - 10476 - 1.0)

**Grover Beach Site**  
**Kevin Goodman**  
BH Program Supervisor  
(16602 - 8434 - 1.0)

**Grover Beach Site**  
**Patricia (Tricia) Righetti**  
BH Program Supervisor  
(16602 - 8318 - 1.0)

Marta Fuentes-Blevins  
Administrative Asst III  
(16602 - 7809 - 1.0)

Camila Hernandez  
Administrative Asst III  
(16602 - 6999 - 1.0)

Joseph (Joe) Umaly  
LPT/LV Nurse III  
(16602 - 7822 - 1.0)

Richard Molloy  
BH Specialist II  
(16602 - 8443 - 1.0)

Leticia Palafox  
BH Clinician II  
(16602 - 8415 - 1.0)

Paterese Reynolds  
BH Clinician III  
(16602 - 8420 - 1.0)

Vacant  
B.H. Specialist II  
(16602 - 8440 - 1.0)

Vacant  
Administrative Asst III  
(16602 - 11382- 1.0Sub)

Nikia Wade  
BH Specialist II  
(16602 - 8447 - 1.0)

Vacant  
BH Clinician II  
(16602 - 8428 - 1.0)

Danielle Warren  
BH Specialist II  
(16602 - 8463 - 1.0)

Jose Mejia  
BH Worker III  
(16602 - 8470 - 1.0)

Christie Castro  
BH Specialist II  
(16602 - 8450 - 1.0)

Patrice Coulter  
Admin Assistant III  
(16602 - 1879 - 1.0)

Vacant  
BH Clinician II  
(16602 - 8429 - 1.0)

Savannah Donovan  
BH Specialist II  
(16602 - 8460 - 1.0)

Vacant  
BH Clinician II  
(16602 - 8413 - 1.0)

Nayona Pena  
BH Clinician II  
(16602 - 8423 - 1.0)

Gloria Lopez  
BH Clinician II  
(16602 - 8416 - 1.0)

Vacant  
BH Clinician II  
(16602 - 8431 - 1.0)

Vacant  
BH Clinician II  
(16602 - 8316 - 1.0)

Boone Tucker  
BH Specialist II  
(16602 - 8449 - 1.0)

Elba Vasquez  
BH Worker III  
(16602 - 8467 - 1.0)

Vacant  
BH Clinician III  
(16602 - 8406 - .75)

Vacant  
BH Clinician I  
(16602 - 10255 - 1.0 LT)

Amber Miller  
BH Specialist II  
(16602 - 8438 - 1.0)

Vacant  
Admin Assistant III  
(16602 - 7811 - 1.0)

Angie Acosta  
BH Specialist II  
(16602 - 8448 - 1.0)

Angelica Ruvalcaba  
BH Specialist II  
(16602 - 8442 - 1.0)

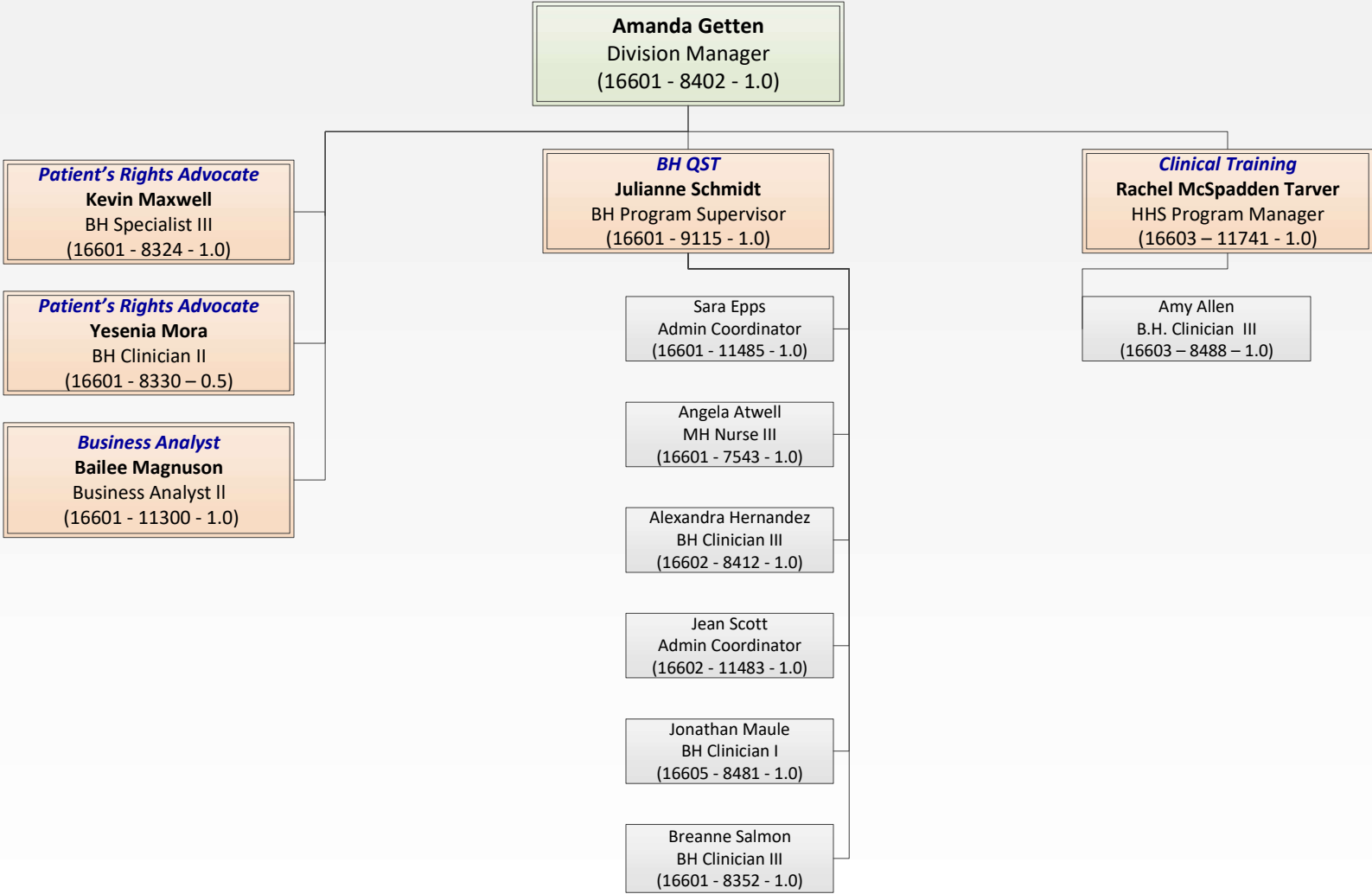
Vacant  
MH Nurse  
(16602 - 0442 - 1.0)

Rosie Armendariz  
BH Specialist II  
(16602 - 8452 - 1.0)

Lavinder Bagdwal  
LPT/LV Nurse III  
(16602 - 7723 - 1.0)

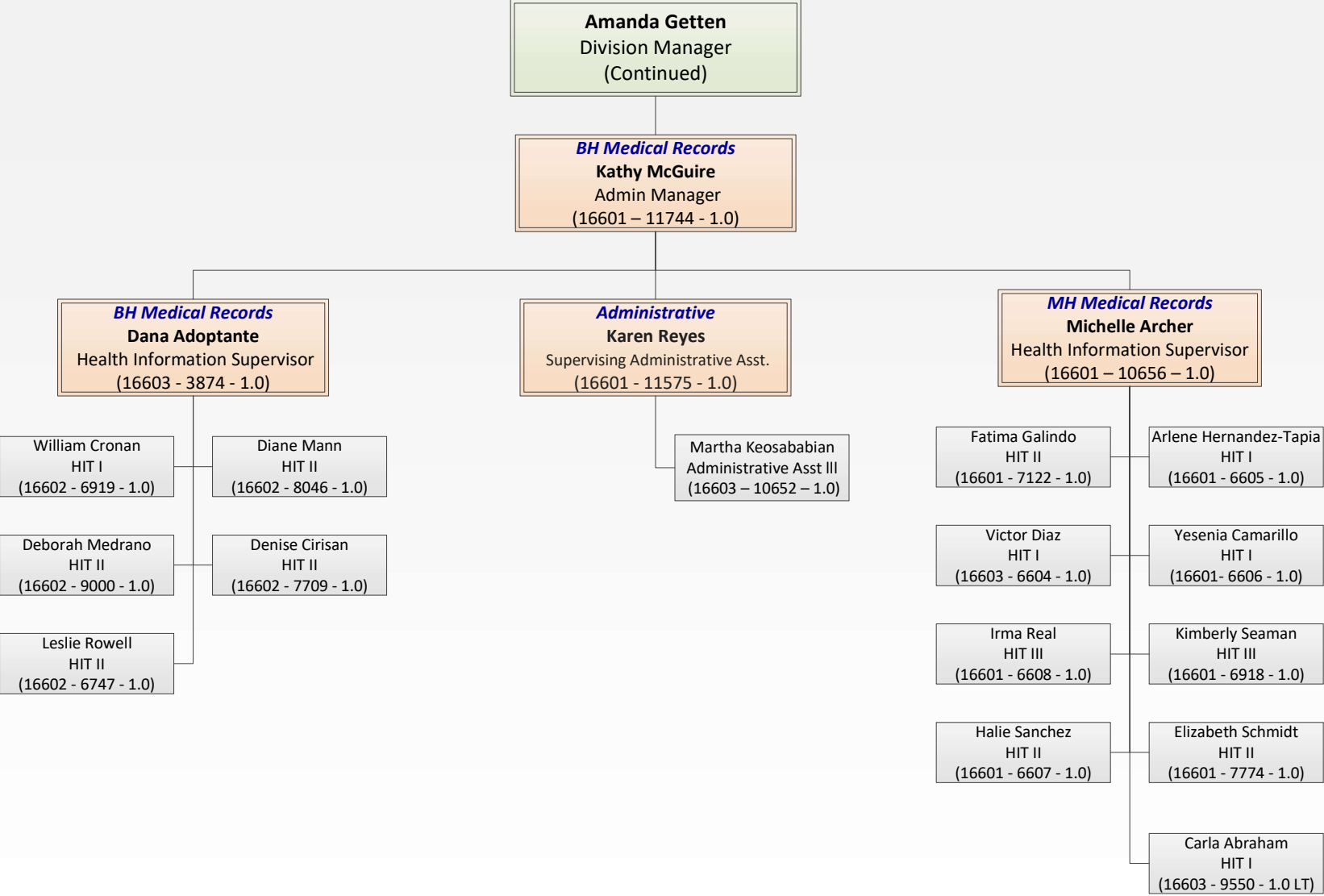
# Health Agency

## Behavioral Health: Quality Support Team



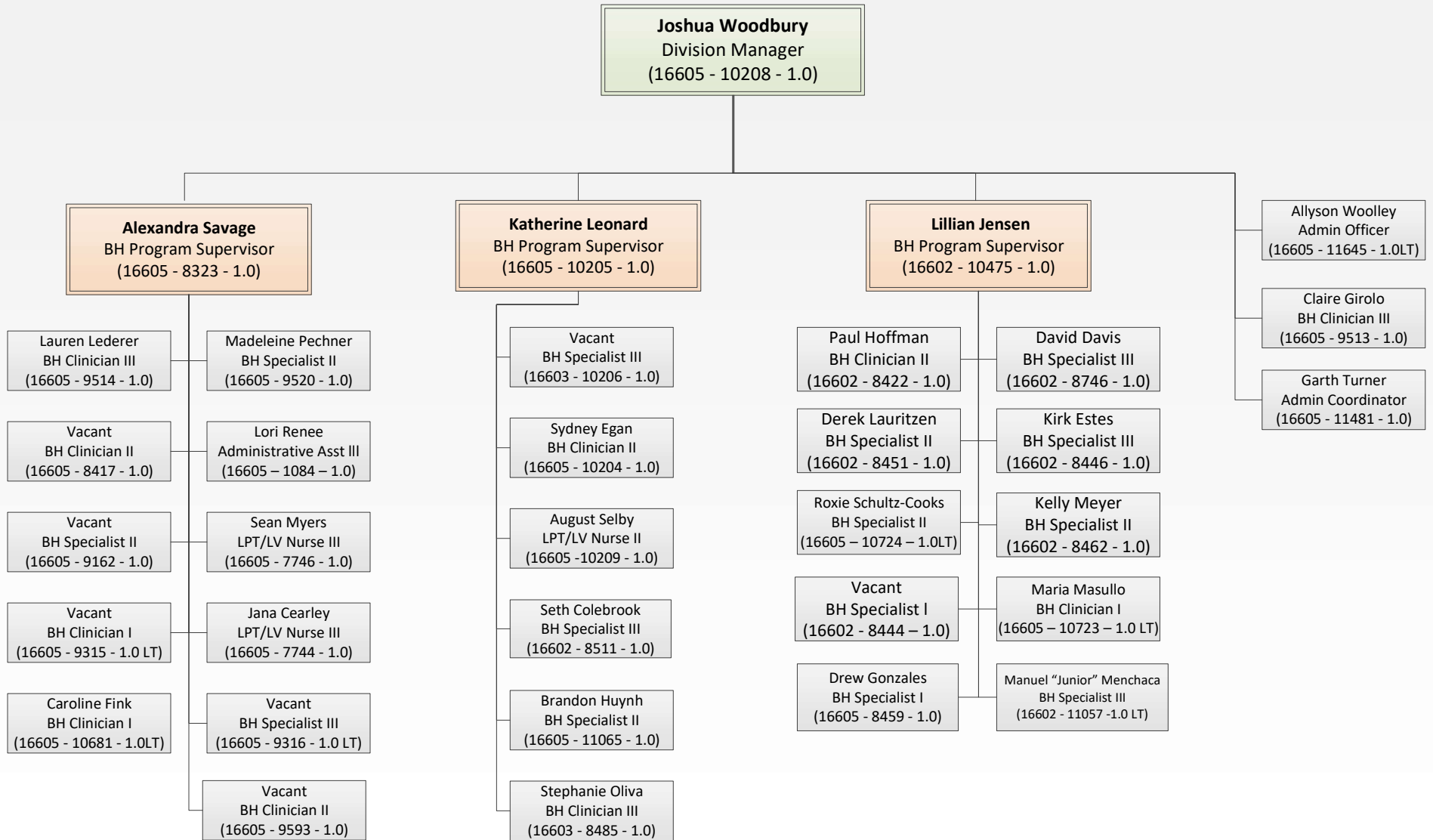
# Health Agency

## Behavioral Health: Quality Support Team



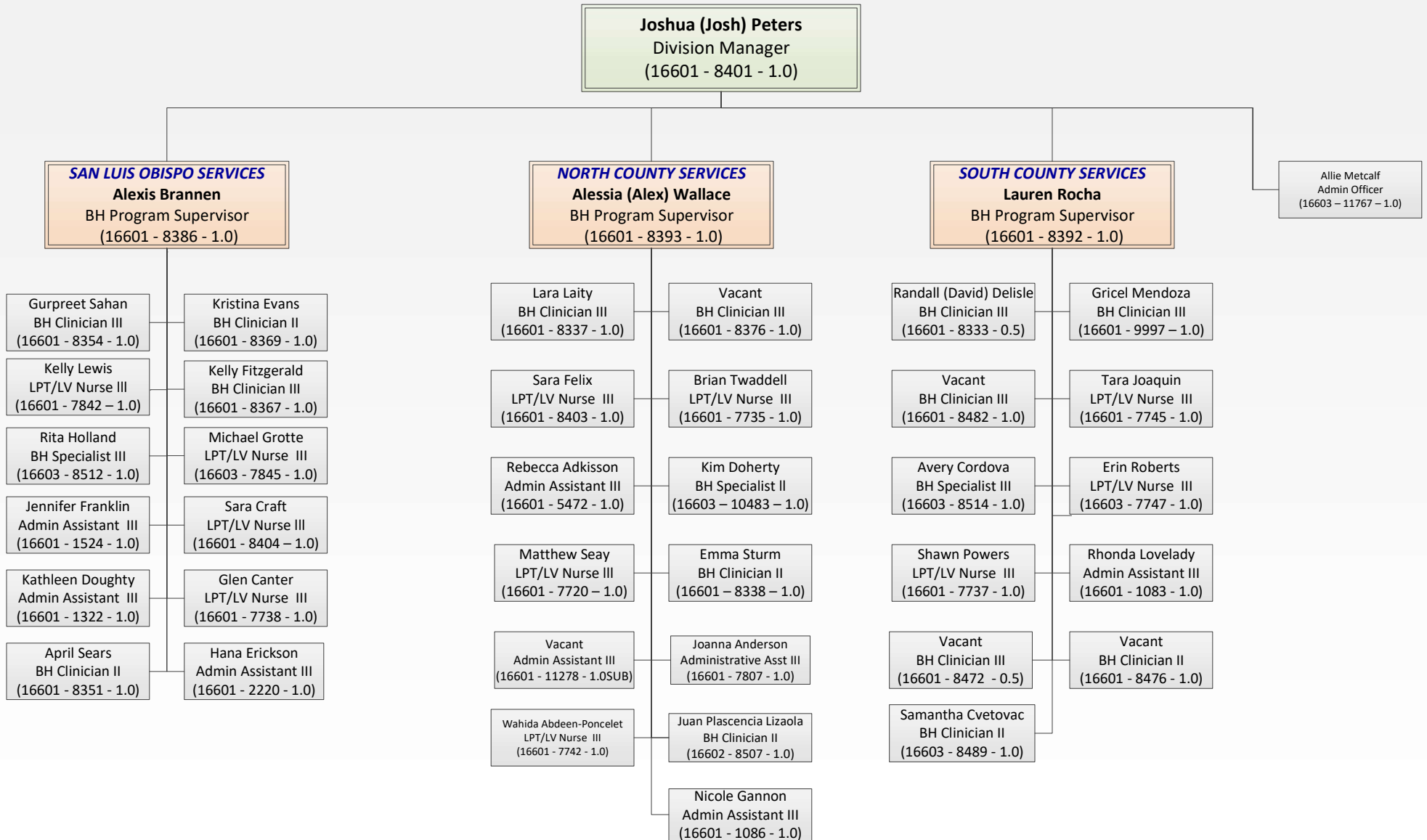
# Health Agency

## Behavioral Health: Justice Services



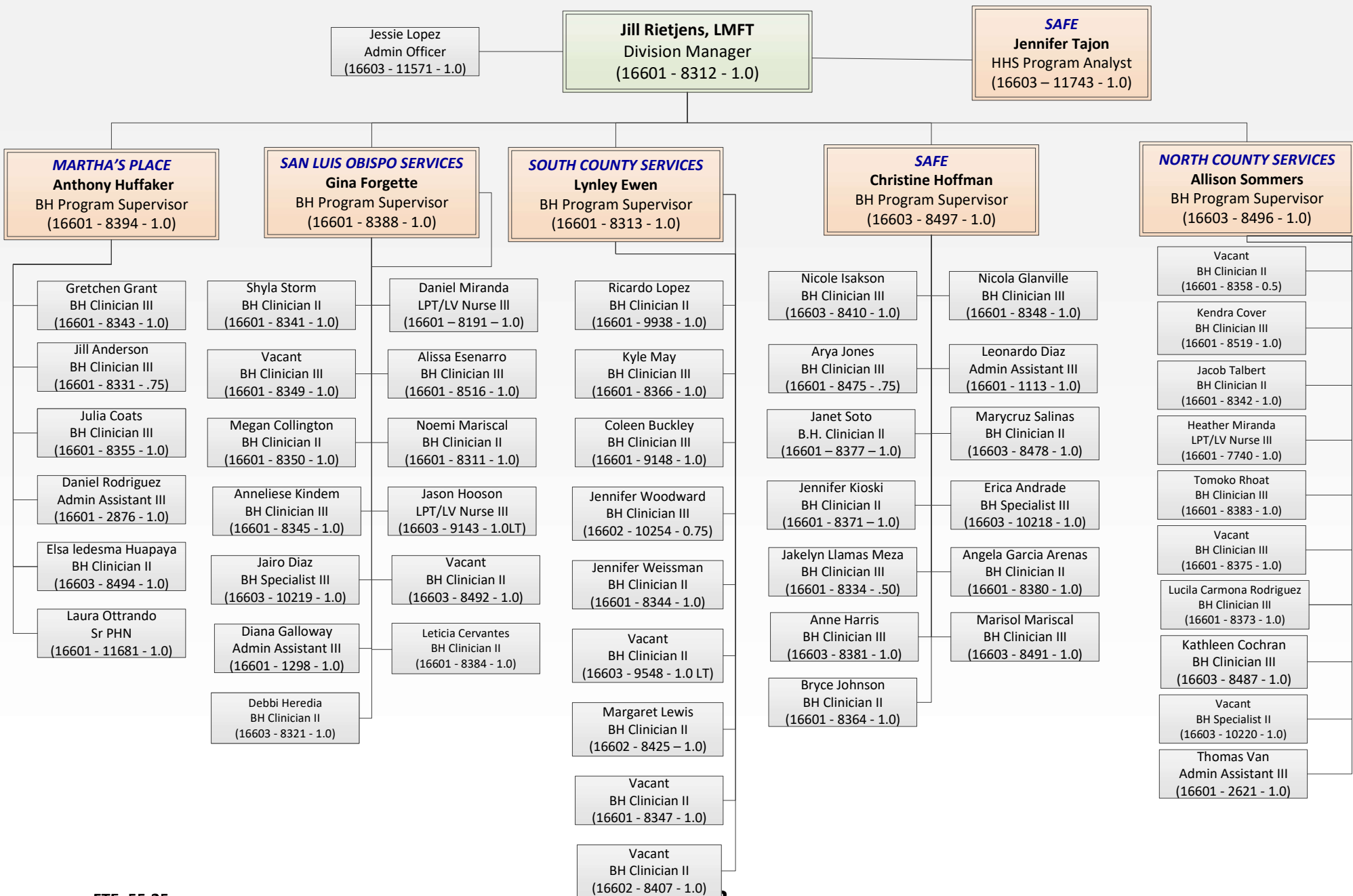
# Health Agency

## Behavioral Health: Adult Services



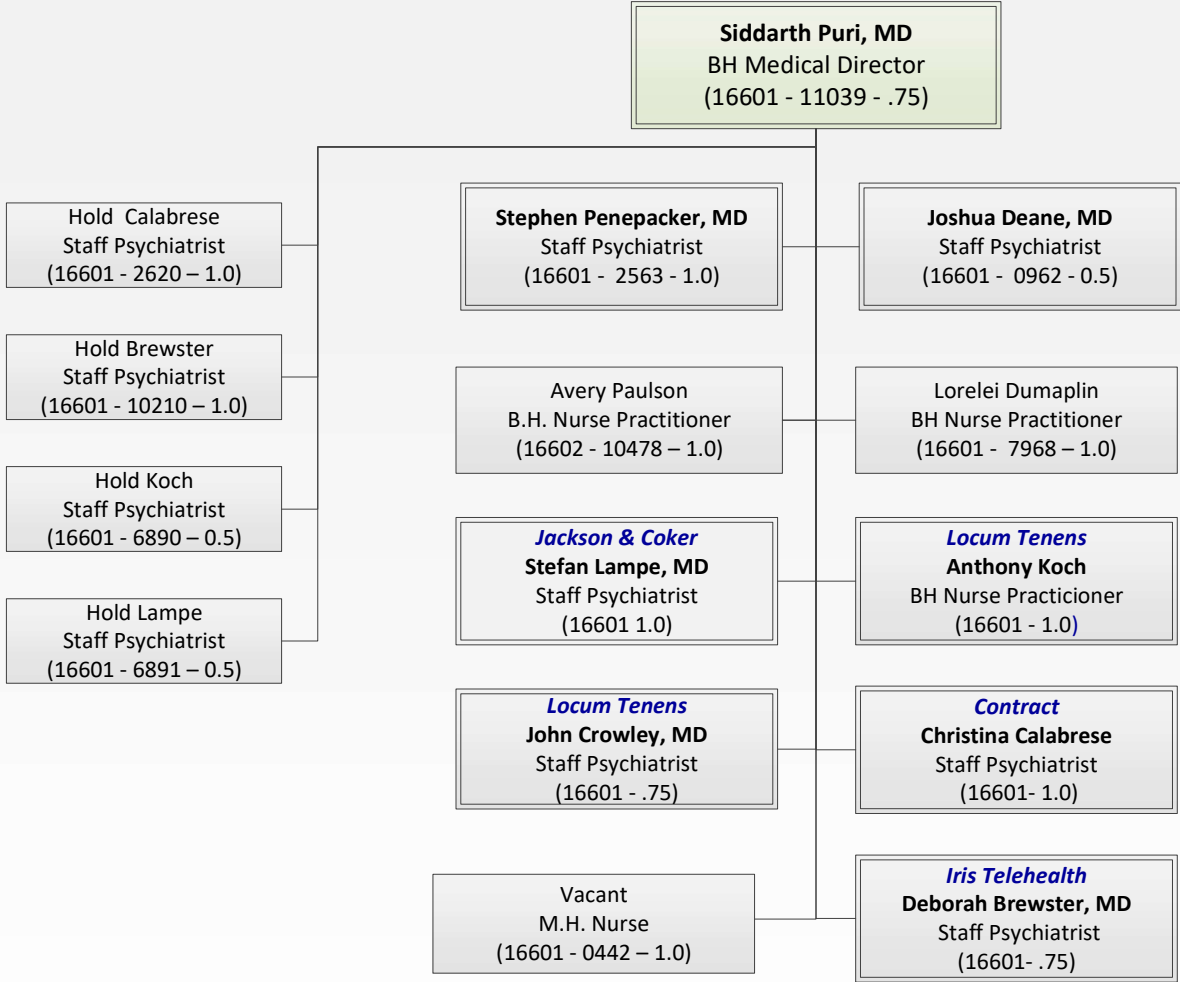
# Health Agency

## Behavioral Health: Youth Services



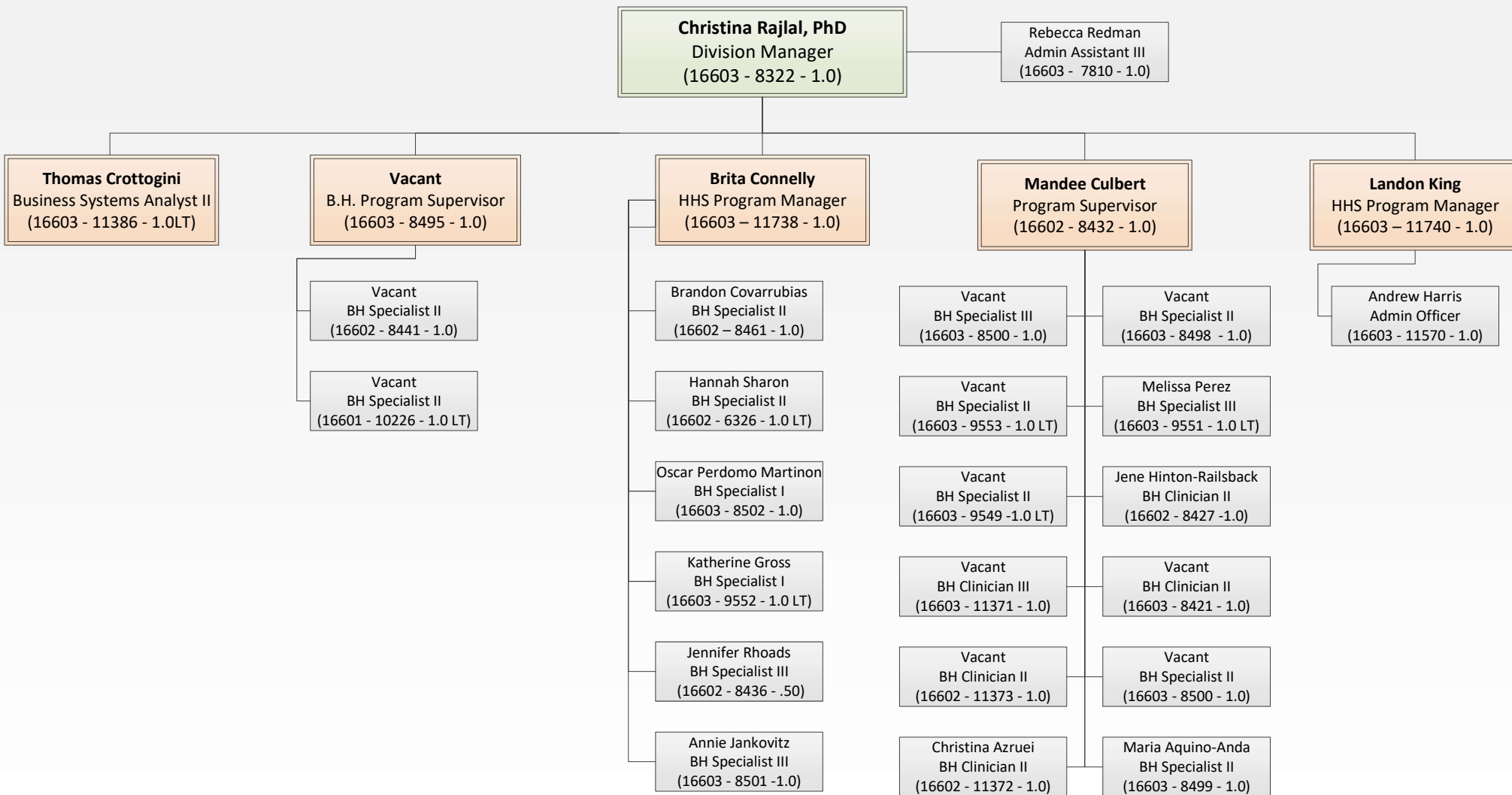
# Health Agency

## Behavioral Health: Psychiatric Services



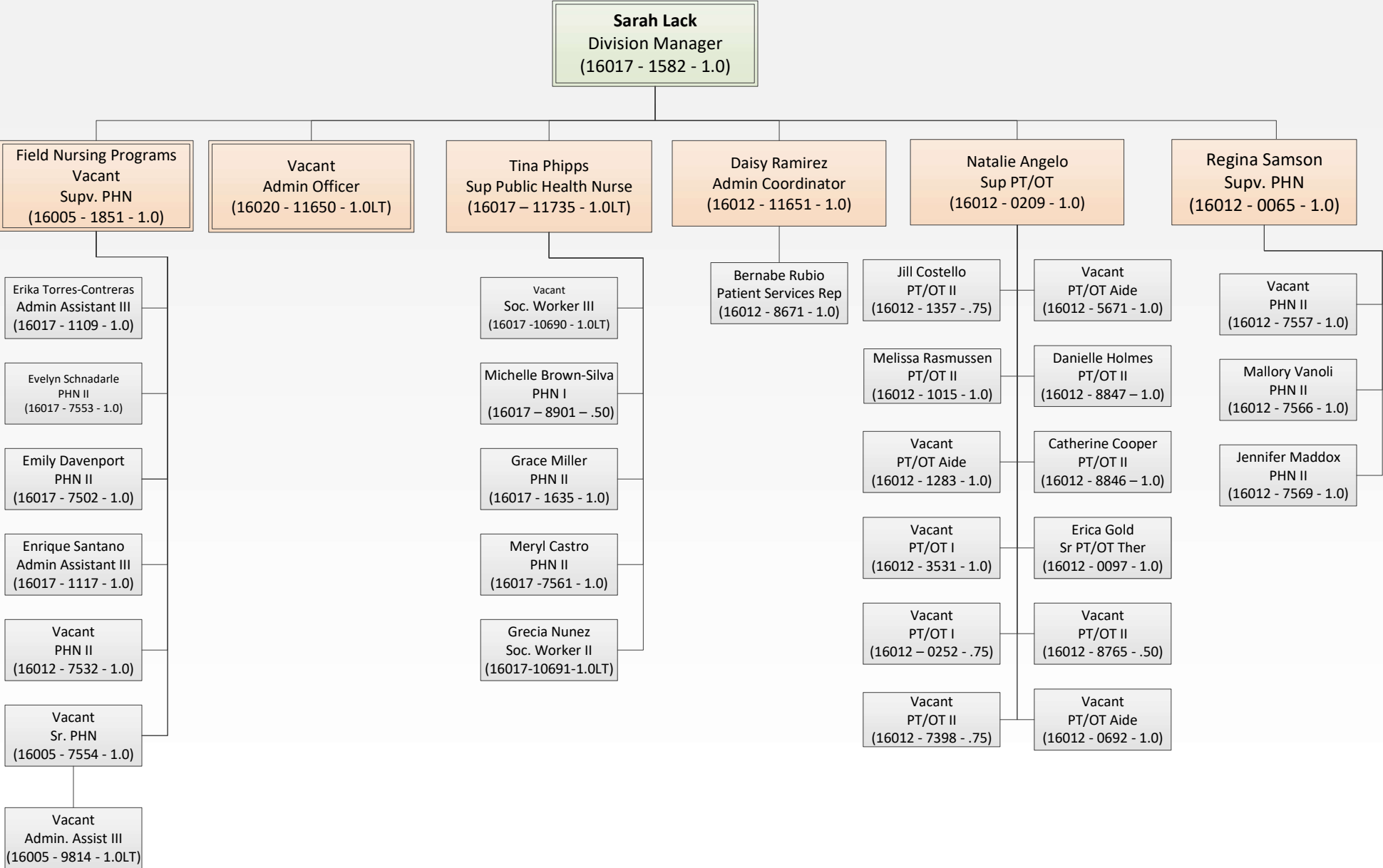
# Health Agency

## Behavioral Health: Prevention & Outreach



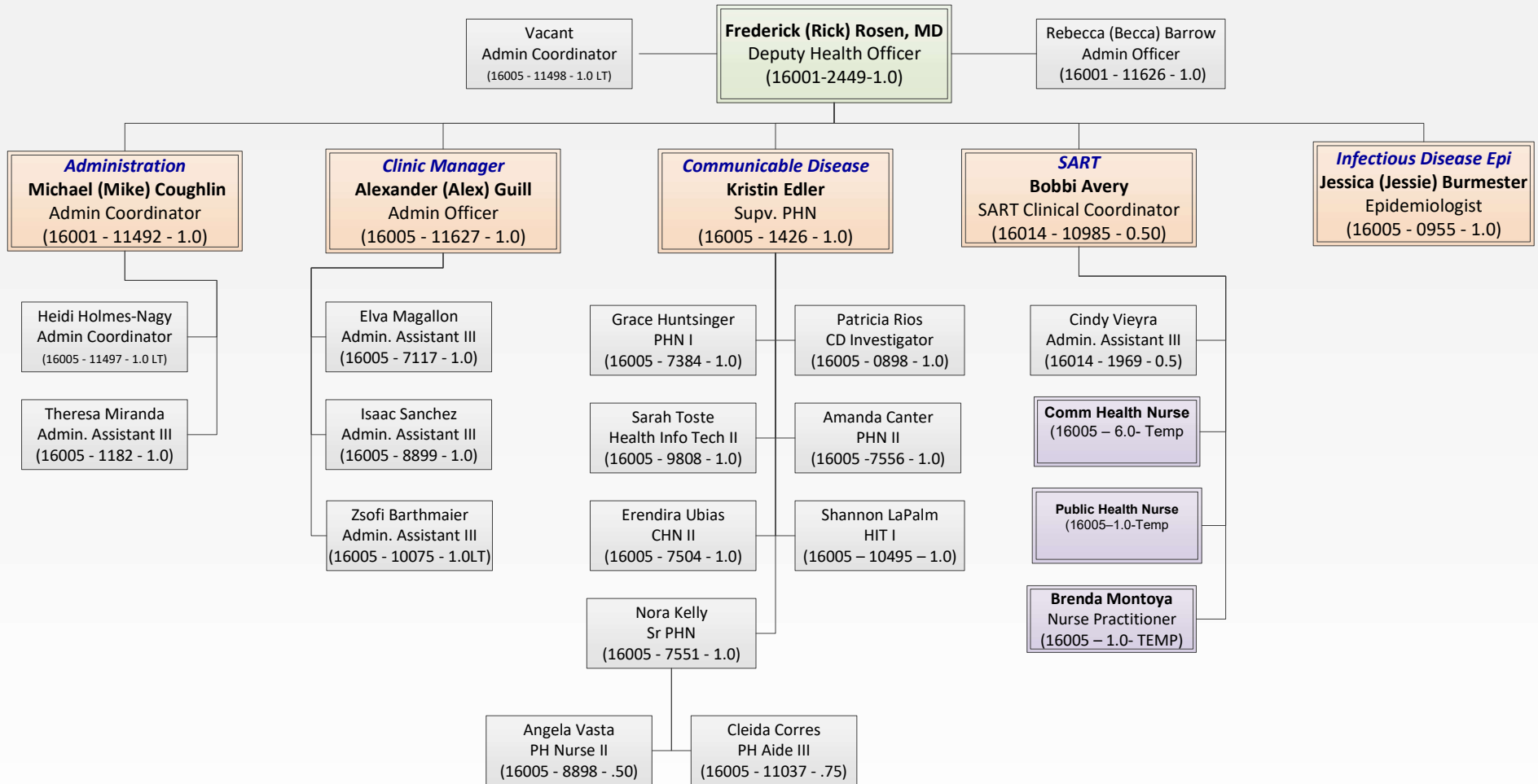
# Health Agency

## Public Health: Maternal and Child Health



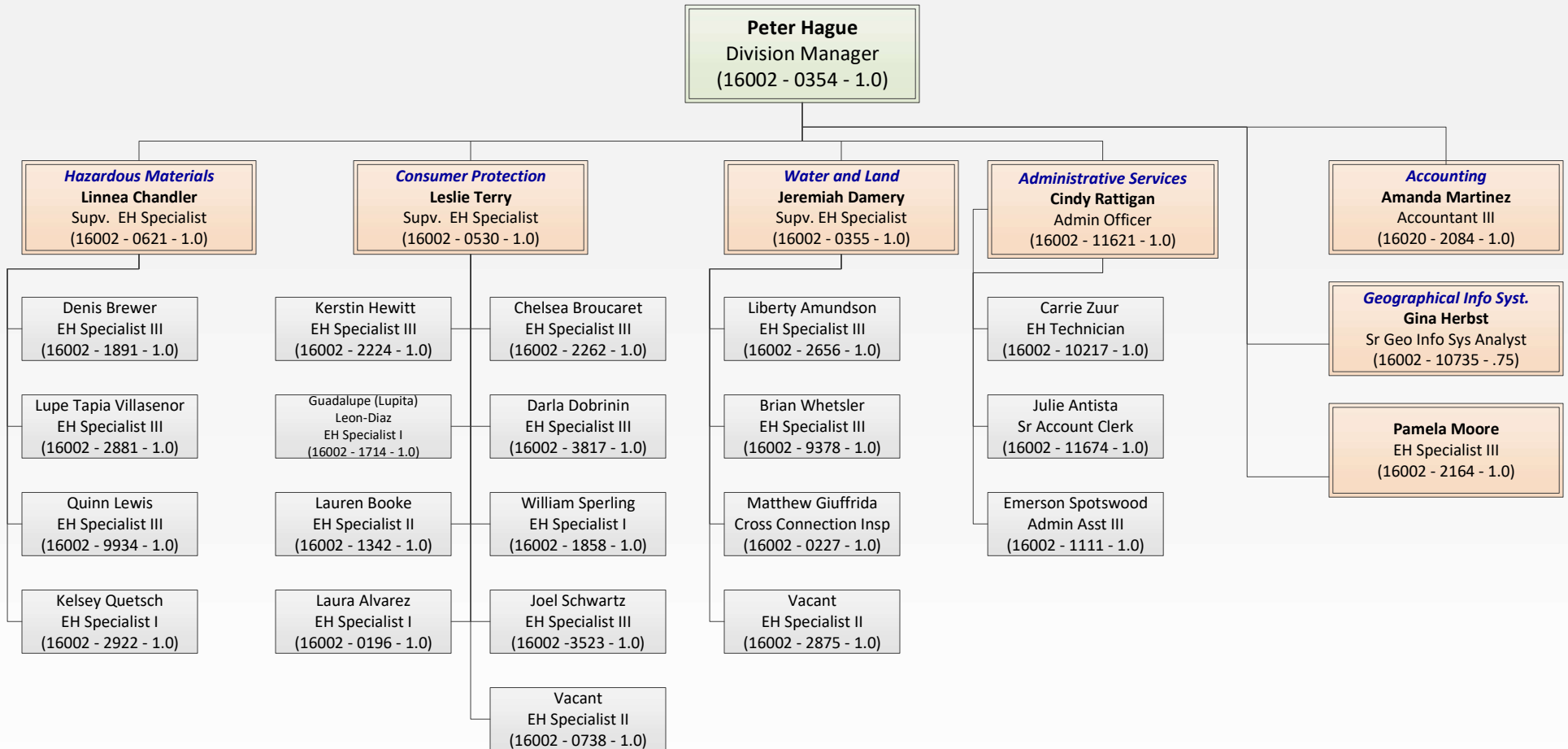
# Health Agency

## Public Health: Clinical and Communicable Disease Services



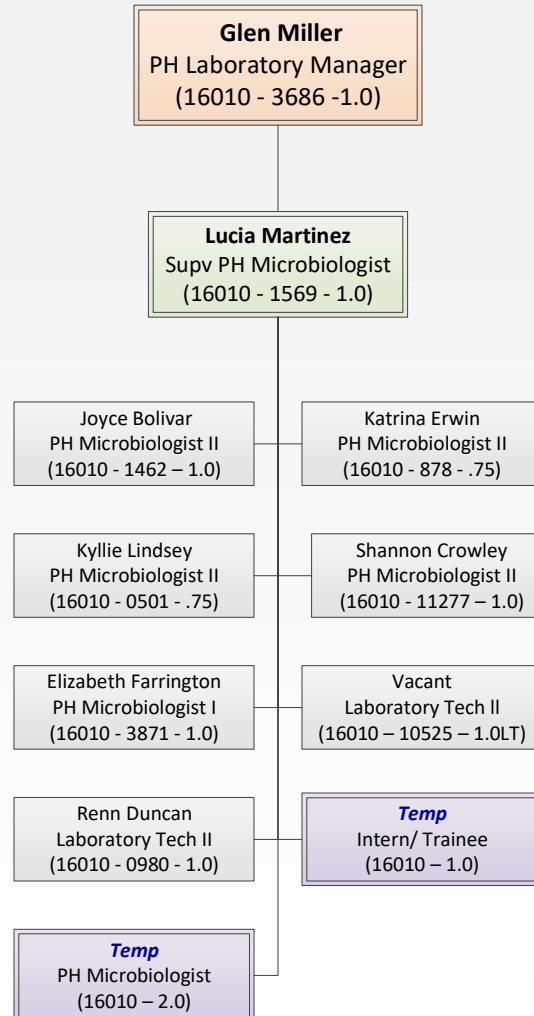
# Health Agency

## Public Health: Environmental Health Services



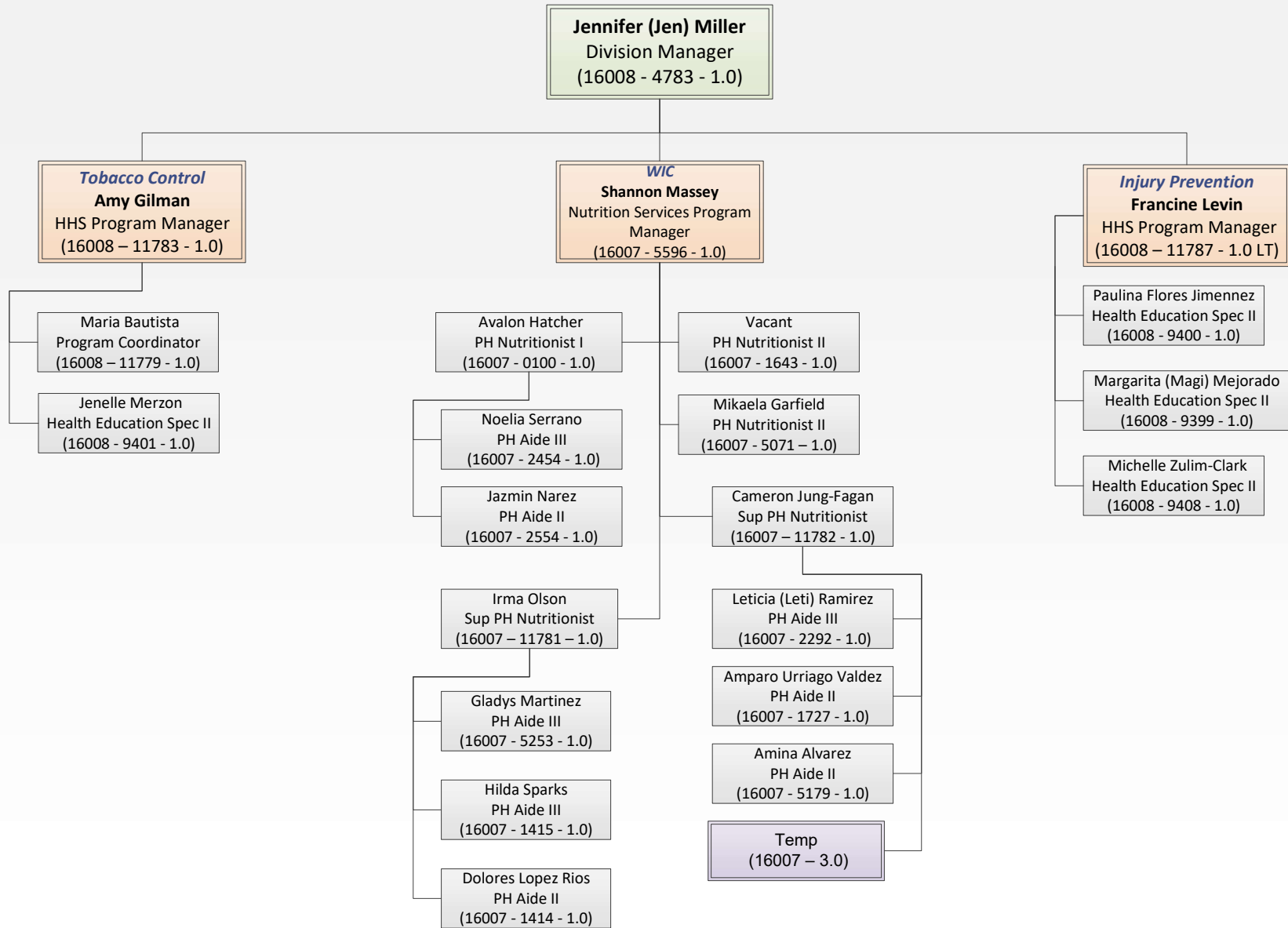
# Health Agency

## Public Health: Laboratory



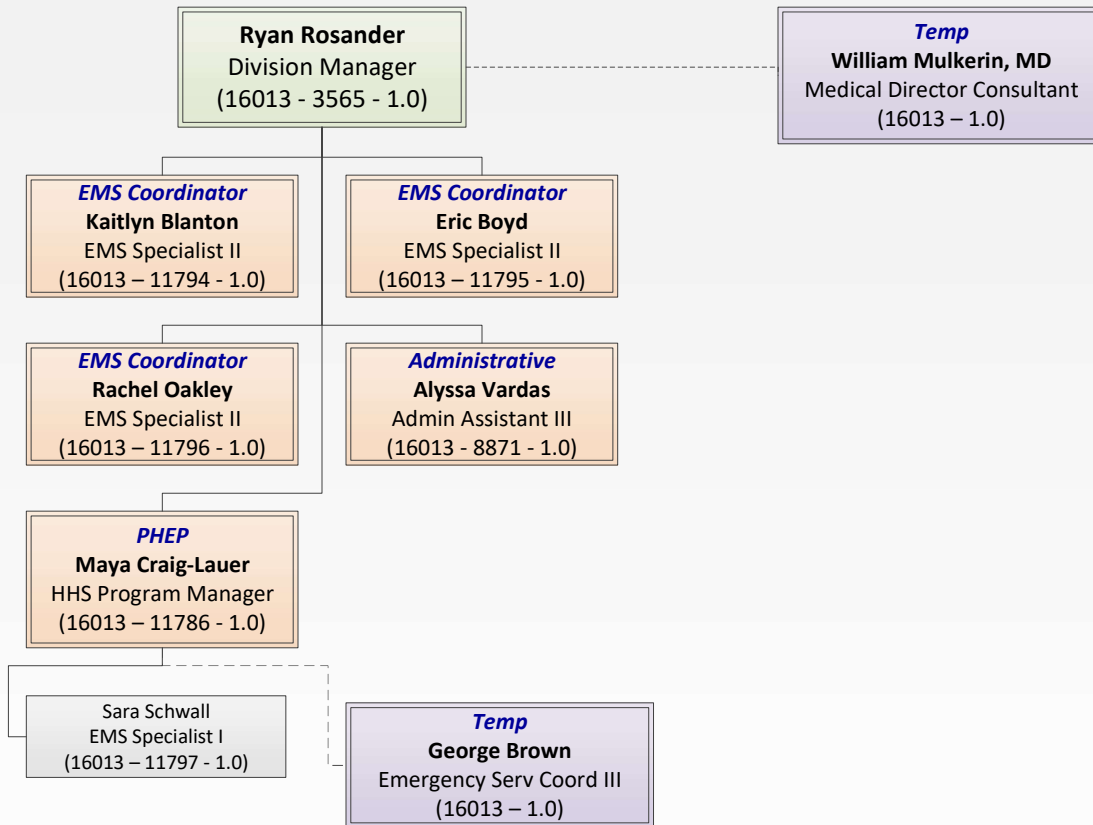
# Health Agency

## Public Health: Health Promotion



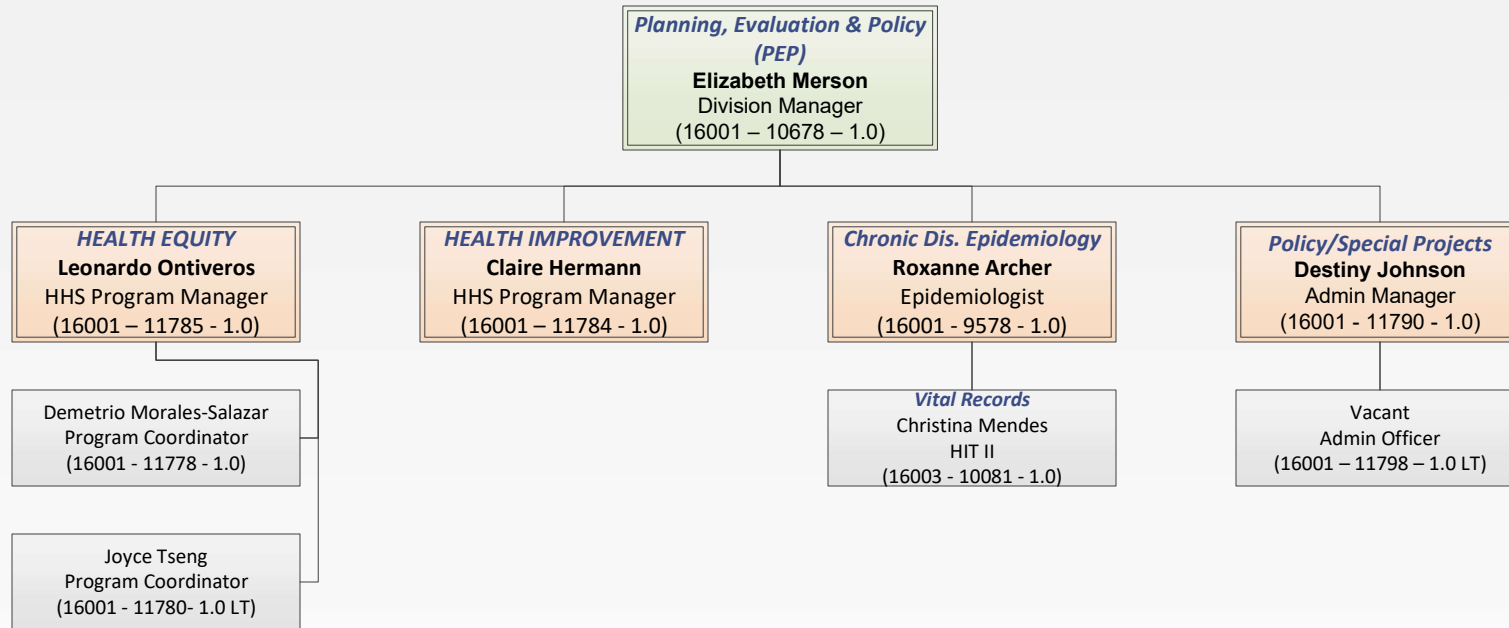
# Health Agency

## Public Health: Emergency Medical Services



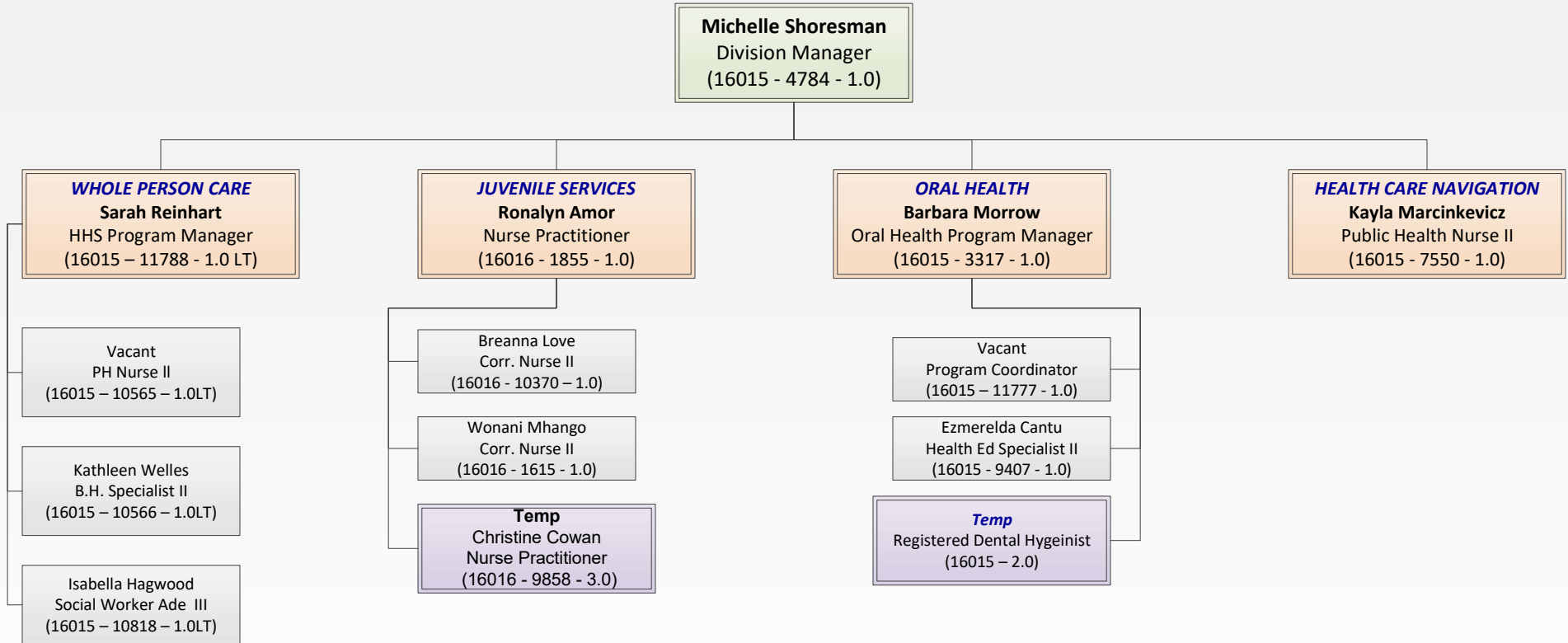
# Health Agency

## Public Health: Planning, Evaluation, and Policy

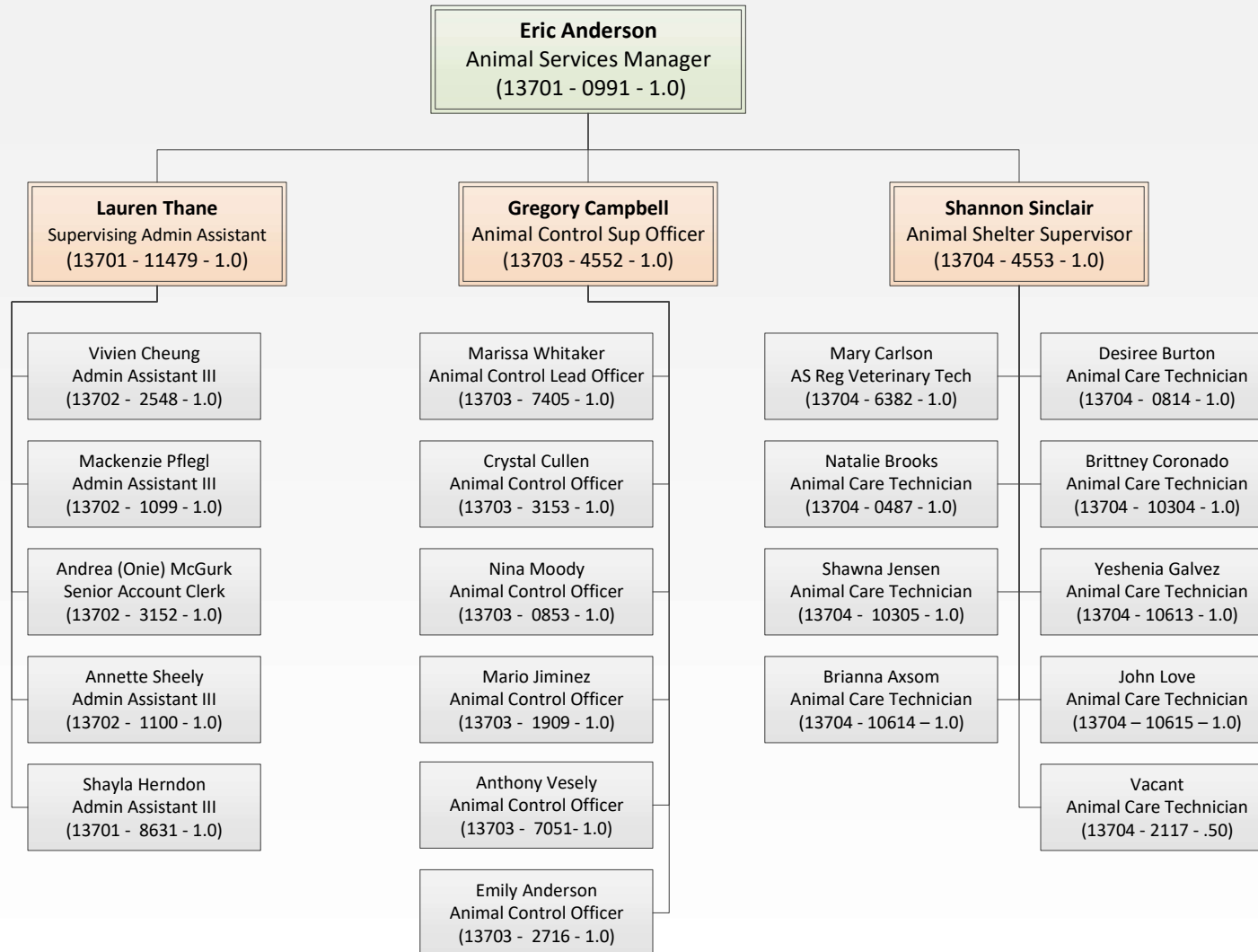


# Health Agency

## Public Health: Health Access

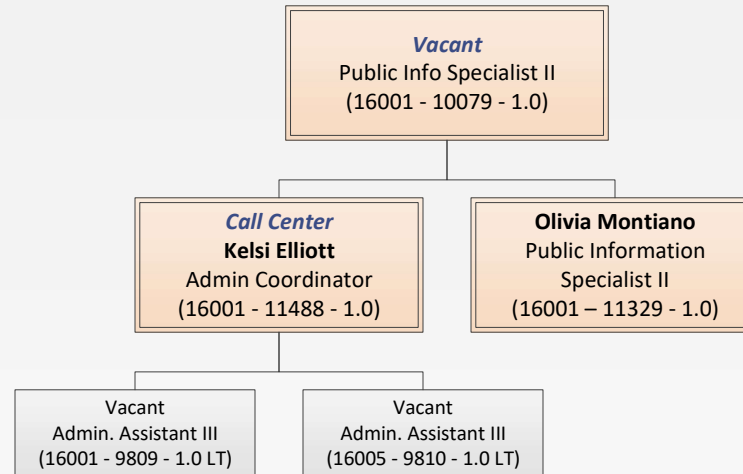


# Health Agency Animal Services



# Health Agency

## Public Health: Public Information Office



# Health Agency Public Guardian

