

# Commercial Sexual Exploitation of Children (CSEC) Protocol for San Luis Obispo County

Revised: 08/14/2017

Created by CSEC Collaborative Response Team

---



## TABLE OF CONTENTS

(Click to select topic)

County Policy .....	2
Governance .....	2
Memorandum of Understanding.....	2
Information Sharing and Confidentiality .....	2
Training and Prevention.....	3
Practices and Prevention Efforts .....	3
Target Population.....	3
Identifying Commercial Sexually Exploited and At-Risk Youth .....	4
Identification .....	4
Risk Factors .....	4
San Luis Obispo County Screening Tools.....	5
San Luis Obispo County Screening Tool User Guide .....	5
Intervention.....	5
Scheduling a Multidisciplinary Team Meeting .....	5
Immediate Multidisciplinary CSEC Response .....	6
Ongoing Multidisciplinary CSEC Response .....	7
County Jurisdiction.....	7
CSEC Collaborative Response Team Flowchart.....	8
Youth Assessment .....	8
Juvenile Court .....	9
Placement .....	9
Community Agency Response Flowchart: .....	9
CSE and At-Risk Youth Continuum of Care .....	9
Key Principles .....	9
San Luis Obispo County Service Providers .....	10
Other Agency Roles .....	15
Data and Coordination.....	16
Data Collection.....	16

### County Policy

The Commercial Sexual Exploitation of Children (CSEC) Collaborative Response Team of San Luis Obispo County is taking a victim centered approach to ensure that youth who are sexually exploited get the support and services they need. The primary goal is to help youth of Commercial Sexual Exploitation (CSE) heal, address their trauma, build skills to enter adulthood and contribute to society regardless of race, citizenship, sexual orientation, religion, gender, or age.

The purpose of this protocol is to ensure that CSE youth are successfully placed in a protective environment that offers therapeutic programming, specific to their trauma, in order to best stabilize them during this critical time.

It is the County's desire to strategically respond to existing gaps in knowledge and practice around CSEC, in order to help agencies, who have direct contact with CSE youth, understand the extreme physical, psychological, emotional, and social harms associated with CSEC. This will include a range of victim services across a number of agencies, that will provide a continuum of care model to fully address the CSE youth's needs. In addition, an interagency collaborative approach will be utilized to outreach to the CSE and at-risk youth population so they can better protect themselves from CSEC and recognize risky situations.

### Governance

Children's Services Network (CSN) which consists of the top Child Welfare, Behavioral Health (Substance Abuse & Mental Health), Law Enforcement, District Attorney, Probation, School Districts, Juvenile Justice, Child Abuse Prevention Agency, and other Community Stakeholders serve as the governance committee for the San Luis Obispo CSEC Collaborative.

To ensure the effectiveness of the CSEC Protocol for San Luis Obispo County, a County CSEC Multi-Agency Steering Committee will be identified by CSN. The CSEC/Human Trafficking Review Panel will meet on a quarterly basis to review incidents of CSEC and/or Human Trafficking; identify what is working well; discuss any barriers/gaps that have arisen; and develop strategies to ensure the collaboration continues to perform efficiently. The CSEC Review Panel will also be responsible for submitting quarterly progress reports to CSN.

### Memorandum of Understanding

The Memorandum of Understanding for the Commercial Sexual Exploitation of Children has been signed by the San Luis Obispo County Department of Social Services, San Luis Obispo County Juvenile Probation, Behavioral Health, Public Health, Juvenile Court, and other identified community partners. This Memorandum of Understanding, hereinafter referred to as "MOU", shall stand as evidence that the above parties agree to participate in an exchange of services by coordinating the County Purpose of the Commercial Sexual Exploitation of Children Collaborative Response Team.

The crime of human trafficking requires a comprehensive and collaborative response between law enforcement, service providers, and the community. The MOU sets out the mutual understanding of the principles underlying the relationship between the parties in matters concerning the planning and delivery of law enforcement investigations, victim-centered services and promoting public awareness.

### Information Sharing and Confidentiality

The CSEC Collaborative agencies agree information will be shared and used by parties in a manner that complies with state and federal laws, and ethical considerations governing confidentiality, including re-

disclosure and privilege, and that does not violate the youth's due process rights as responders or defendants in delinquency, criminal, summary offense, status offense, and child welfare cases, including the rights against self-incrimination. In order to ensure confidentiality compliance, agency staff will be required to complete the SLO County MDT training to become familiar with federal, state, and local confidentiality mandates.

A Confidential Release of Information will be read and signed before each meeting to ensure everyone understands the confidentiality mandates. For additional information sharing, the DSS 815 Multi Service Agency Release of Information form or specific agency's release of information documents may be utilized to share information or make additional referrals for resources/services.

### **Training and Prevention**

#### **Practices and Prevention Efforts**

The San Luis Obispo County CSEC Speakers Bureau and the CSEC Youth Subcommittee have merged with the Human Trafficking Education and Outreach Committee in efforts to provide an interagency approach to training community stakeholders working with youth in child-serving systems. The CSEC/HT training will bring awareness to help identify sexually exploited and at-risk youth, provide service and supports for CSEC, as well as educate on the use of culturally competent and trauma-informed practices.

The Human Trafficking Education and Outreach Committee will be engaging youth and community stakeholders to identify needs for youth and gaps in resources/services. This committee will plan trainings, community events, and add youth specific services to local Family Resource Centers throughout SLO County. The goal will be to identify youth who are at risk for exploitation and connect them with services and support before victimization occurs.

#### **Target Population**

The purpose of identifying San Luis Obispo's target population is to make CSEC training available to all Community Partners that directly work with youth. This population can assist with identifying and providing services to CSE and at-risk youth.

Identified target population includes:

- Aaron's Boys Home
- Achievement House
- Animal Control
- Big Brother/Big Sister
- California Polytechnic State University
- California Youth Connection(CYC)
- Code Enforcers
- Community Action Partners of San Luis Obispo (CAP-SLO)
- Community Schools
- Controlling Anger and Learning to Manage It Program (CALM)
- Court Appointed Special Advocate (CASA)
- Cuesta College
- Drug and Alcohol
- Elementary Schools
- Emergency Medical Services/ Paramedic
- Faith based societies
- Family Resource Centers
- Fire Department
- Foster parents
- Foster Parents Association
- Gay and Lesbian Alliance (GALA) of the Central Coast
- Grizzly Youth Academy

- High Schools
- Homeless Shelters (ECHO, Maxine Lewis)
- Independent Living Program (ILP)
- Juvenile Court
- Law Enforcement
- Mental Health
- Middle Schools
- Nurses and Doctors
- Parent Connections
- Parent's Resource for Information Development and Education (PRIDE) Training
- Parents, Family, and Friends of Lesbians and Gays (PFLAG)
- Parents/Guardian
- Parks and Recreation
- Probation
- Public Health
- Restorative Partners
- RISE
- Center for Family Strengthening
- Sexual Abuse Response Team (SART)
- Sober Schools
- Teachers
- The Boys and Girls Club
- Therapists
- Trans Central Coast
- Tri-Counties Regional Center
- United Cerebral Palsy
- Women's Shelter Program
- Work Investment Act (WIA)
- YMCA
- Youth Treatment Program (YTP)

## **Identifying Commercial Sexually Exploited and At-Risk Youth**

### **Identification**

In order to understand the scope and nature of the problem in San Luis Obispo County and provide appropriate services, professionals will screen youth and assess their needs on an ongoing basis.

### **Risk Factors**

The following risk factors have been identified by Community Partners as being the most prevalent for youth in San Luis Obispo County:

- Child Welfare history\*
- Cutting / Self-Harm
- Developmental delays
- Drug or substance use
- Entertainment and Modeling Profession (interest or participation)
- Gang affiliation\*
- High number of moves in placement
- History of Criminal Record/ Arrest History/ Probation\*
- History of pregnancy or child birth
- History of sexual abuse
- Knows someone who has had sex for drugs, shelter, goods, or money.
- Lack of permanency – No adult or mentor they trust in their life
- Lesbian, Gay, Bi-Sexual, Transgender, Questioning, Queer, Intersex (LGBTQQI)
- Low Attendance / Truancy
- Low self-esteem
- Migrant workers
- Multiple incidents of running away
- Poor School Performance
- Probation\*
- Suicidal thoughts

- Tattoos

\*Generational history if applicable

### San Luis Obispo County Screening Tools

Child Welfare Services and Juvenile Probation are utilizing the West Coast Children's Clinic Commercial Sexual Exploitation – Identification Tool (CSE-IT) to identify whether children/youth have been, are being, or are at risk of becoming commercially sexually exploited. The CSE-IT is used to screen all children age 10 and above who are: chronically on the run and/or living in the same home in which another child is identified as having been exploited.

Child Welfare Services Hotline staff are utilizing a shorter version of the local CSEC Screening Tool to assist in processing referrals with allegations of exploitation. Emergency Social Workers and Case Carrying Social Workers are using the CSE-IT to screen youth they have assigned to their caseloads.

Behavioral Health, Public Health, and the rest of the collaborative agencies are utilizing the SLO County CSEC Screening Tool. The agencies that complete the tool (not in the presence of the youth) will need to determine the level of risk the youth is at based on the number total from the questions that were answered by the screener. The screener at the agency can refer the youth to services in the community that will meet their needs or continue providing services for them. There are certain questions on the Screening Tool that if marked yes, will require an immediate Suspected Child Abuse Report (SCAR) to Child Welfare Services called into (805) 781-KIDS and faxed to (805) 781-1803.

### San Luis Obispo County Screening Tool User Guide

The purpose of the Screening Tool User Guide is to expand and clarify items on the Screening Tool. Sample questions are provided to help guide the screener on how to approach the youth, when the screener does not know the answer to a Screening Tool question or needs further clarification on what the youth disclosed.

## **Intervention**

### Scheduling a Multidisciplinary Team Meeting

The process for scheduling a Multidisciplinary Team Meeting includes the following:

1. The Social Worker (SW)/Deputy Probation Officer (DPO) determine potential dates and times for the MDT meeting
2. The SW/DPO complete the MDT Request Form, including the invitation list, and send it electronically to the scheduler.
  - a. If the MDT Request form is incomplete, the scheduler may contact the SW/DPO indicating which areas need to be completed. The SW/DPO will need to complete those areas and resubmit the completed form to the scheduler.
3. The SW/PO calls the scheduler at 781-1745 for available dates and times to hold the MDT.
  - a. While on the phone with the SW/DPO, the scheduler will check the availability of the facilitator and location for which the MDT has been requested.
  - b. When the date, time, location, and facilitator are available (as requested by the SW/DPO), the scheduler will reserve the meeting room and enter the confirmed information for the meeting date, time and location on the bottom of the MDT Request Form.

4. Once the date, time, and location for the MDT meeting have been confirmed, the scheduler will review the Invitation List for completeness.
  - a. If form is not completed, scheduler will copy and paste the link to the form into an email to the SW/DPO with a request for resubmission.
  - b. The Invitation List contains the names and phone numbers of those whose attendance is required and/or requested. Required attendance is indicated by a check mark in the box next to the invitee's name.
5. If the scheduler finds that those whom the SW/DPO has indicated as "required" are unavailable on the date/time scheduled for the MDT, scheduler will contact the SW and advise him/her of this before contacting any other invitees.
  - a. The SW will then determine if he/she wants the scheduler to continue contacting and confirming attendance for those on the Invitation List, or if the MDT needs to be re-scheduled for a different date, time, and/or location.
6. Once all parties have confirmed that they will attend the MDT, a Calendar Invitation will be sent. The invitation should be sent to the following:
  - Requesting SW/DPO
  - Social Worker Supervisor (SWS)
  - Deputy Probation Officer Supervisor
  - MDT Facilitator
  - Any other applicable invitees to the MDT meeting

**NOTE:** If the family/attendee is Spanish speaking and requires a translator, the scheduler will contact via email the Supervising Administrative Clerk (SAC) for the office where the MDT is going to be held. The SAC will coordinate the assignment of a translator and advise the Scheduler of who has been assigned to translate for the MDT. An invitation will be sent to the translator and SAC. If the family/attendee is other than Spanish speaking, the scheduler will access a list of local translators or the Language Line will be used.

#### Immediate Multidisciplinary CSEC Response

The following agencies are identified as the Immediate Crisis CSEC Collaborative MDT Response Team. These agencies agree to provide a rapid response as well as intensive, ongoing support through the first 72 hours post-identification.

- **Law Enforcement (LE)** – When a CSE youth is identified, LE will initiate the CSEC Collaborative Response Team by contacting Child Welfare Services, Juvenile Probation (if appropriate), the Suspected Abuse Response Team (SART), and RISE (community advocate).
- **Child Welfare Services** – CWS will provide an Immediate Response to all exploitation/CSEC referrals by LE. CWS will conduct a safety assessment, assess the basic and medical needs of the CSE youth, collaborated with LE and SART to address and respond to medical needs and determine most appropriate placement for the youth. Ensure a safety plan is established. Schedule a comprehensive mental health evaluation with Behavioral Health.
- **Department of Public Health's Suspected Abuse Response Team (SART)** – The Nurse or Physician will engage the youth to offer a medical exam and/or forensic exam with the youth's approval.
- **RISE** – An advocate will respond to offer assistance and accompany the youth during the SART exam and LE interview. The advocate will also collaborate with the DA's Office Crime Victim Witness Unit to provide support to the family of the CSE youth.

Additional agencies may be added based on the specific needs of the child/youth.

The Lead Agency will be responsible for ensuring the youth is aware of how information will be shared and how confidentiality is being addressed. Cross reports will be completed if applicable between agencies.

For non-urgent situations, the CSEC Collaborative agencies agree to coordinate and participate in engaging the child/youth within 3-5 days, assess the child, coordinate treatment and services, and plan for safety in non-urgent situations, including:

- Assembling a MDT within 10 days, the team will include individuals connected to the child's life to plan for the child's placement, safety, and well-being,
- Ensuring basic needs are met such as food, clothing, and appropriate placement,
- Assessing and addressing immediate and long-term needs,
- Providing an interagency coordinated case plan approach to serving the child and the child's family or caregiver,
- Developing a safety plan that will address:
  - Potential risk for the child, the family, and the providers,
  - Trauma triggers that may cause a youth to engage in unsafe behavior,
  - Coping skills the youth can use to de-escalate,
  - Delineating and documenting responsibilities of team members in the event a youth exhibits unsafe behaviors,
  - Meaningfully involving youth in planning and decision-making.

The CSEC Collaborative agencies participating in the MDT will be dependent on the needs on the child. Core members participating in CSEC MDTs will include the child and parent/caregiver (if appropriate), LE, CWS, Behavioral Health, Public Health, and community or survivor advocate.

### Ongoing Multidisciplinary CSEC Response

The CSEC Collaborative agencies agree that children who are identified victims of sexual exploitation or trafficking require ongoing and long-term multidisciplinary team support to monitor the youth and ensure his/her needs are adequately addressed.

SLO County will be utilizing existing meetings such Team Decision Meetings, Child and Family Team Meetings, and Wraparound Meetings to provide a multidisciplinary approach to establishing and maintaining current coordinated safety and case plans.

Meetings will be scheduled based on;

- An ongoing schedule based on the child's need,
- Requests by the child, family, or provider,
- Further refining the case plan,
- Discussing potential changes in placement,
- When a youth runs away from placement/home/shelter, and
- Review and amend Safety Plan.

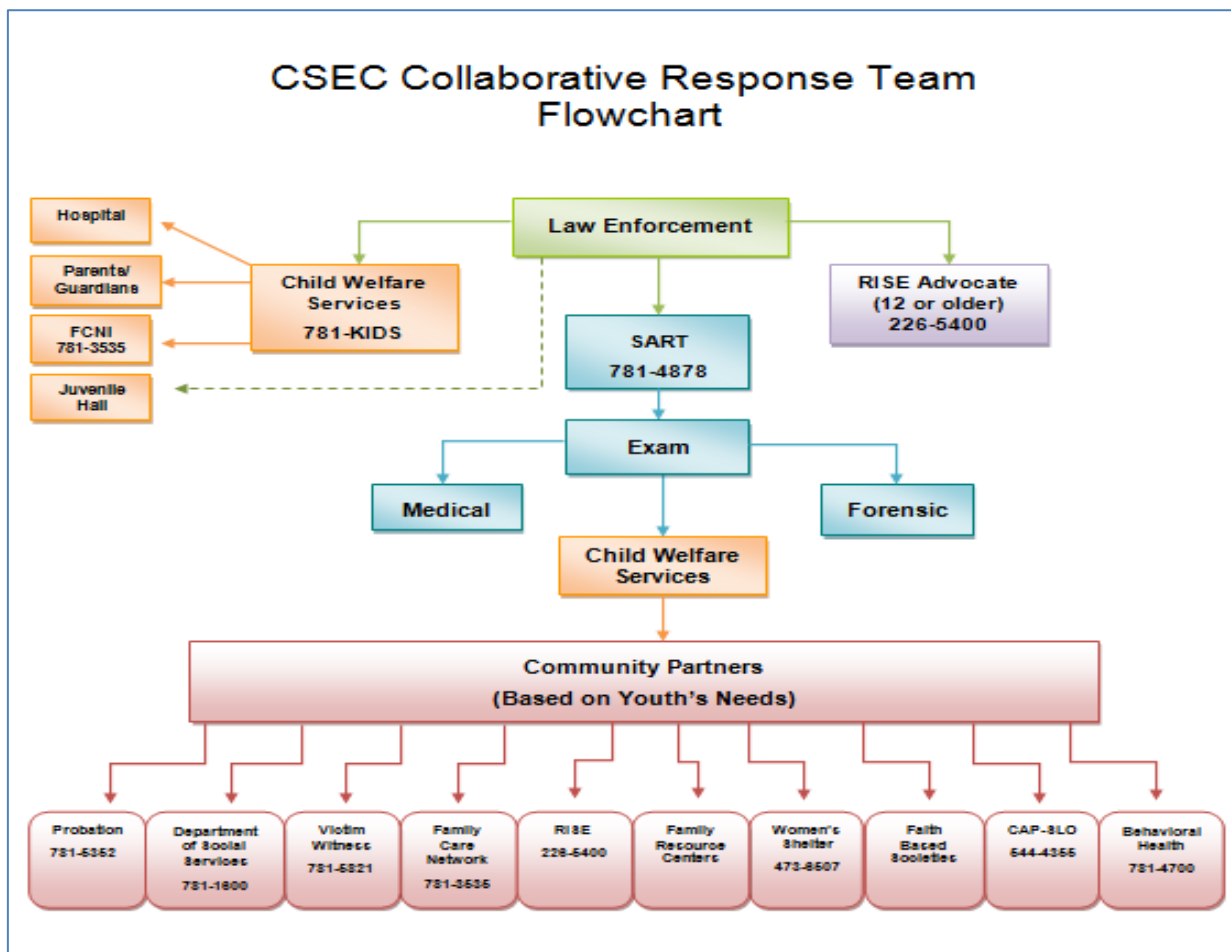
### County Jurisdiction

When CSE victims are taken into protective custody by Law Enforcement or Child Welfare Services, Child Welfare Services will determine the county of origin. If the county of origin is San Luis Obispo, the Social Worker will assess the youth for placement needs and ongoing services.

If the youth has come from another county and that county has jurisdiction, then the Social Worker will communicate with the other county while transportation and placement arrangements are made. The

Social Worker will work with the other county's social worker to have services in place for the youth when they return to their county of residence.

### CSEC Collaborative Response Team Flowchart



### Youth Assessment

The CSEC Collaborative agencies agree that an assessment of an exploited youth's strengths and needs must take place upon identification and on an ongoing basis. Further, the agencies agree that it is in the youth's best interest to limit unnecessary and/or duplicate assessments. Accordingly, the parties will coordinate to ensure that assessments are streamlined and limited when appropriate.

Identified CSEC victims will be referred to Behavioral Health for a mental health evaluation. Behavioral Health will be using the Child and Adolescent Needs and Strengths (CANS) assessment as one of the tools for this evaluation.

Child Welfare Services will be utilizing the CSE-IT and Structured Decision Making (SDM) tools in assessing an identified victim or child at risk of commercial sexual exploitation when an allegation of abuse or neglect is investigated, upon a change in placement, and/or every six months to monitor progress.

Juvenile Probation will be assessing an identified victim or child at risk of commercial sexual exploitation when a child/youth enters the Juvenile Hall, upon a change in placement, and/or every six months to monitor progress.



The CSEC Collaborative agencies agree that the information and statements obtained from the youth as part of the assessment process will be maintained, disclosed, and used only in accordance with all applicable state and federal laws and regulations.

### Juvenile Court

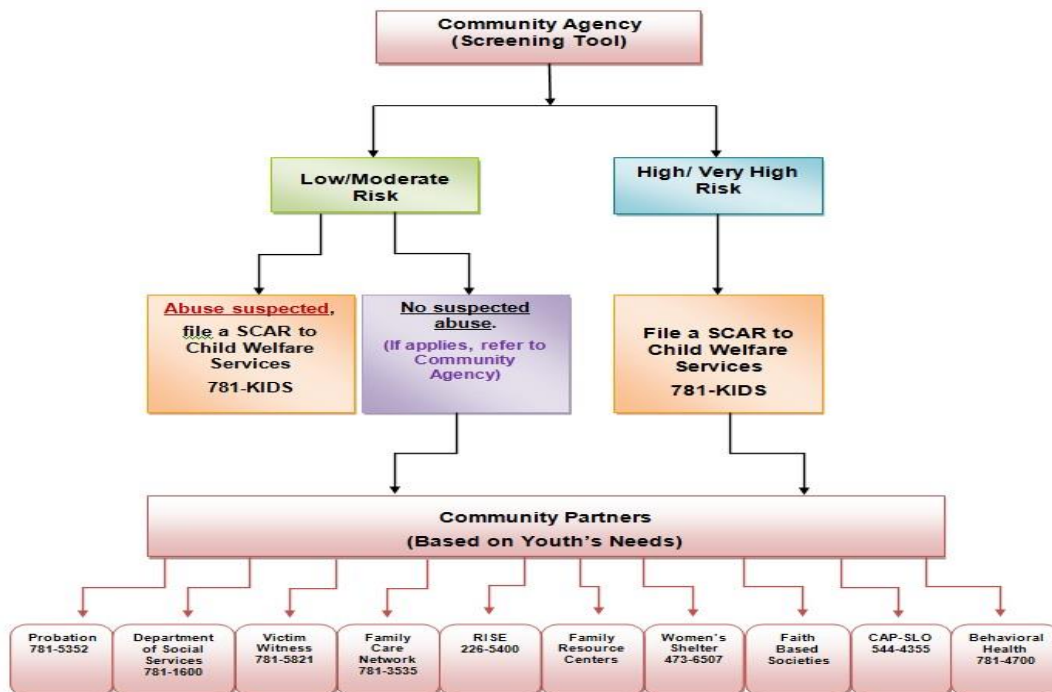
As per SB 1322, minors will not be charged with the crimes of soliciting or engaging in any act of prostitution or loitering with the intent to commit prostitution.

The Juvenile Court of San Luis Obispo County will review all affidavits alleging that a minor committed an offense described in Section 602 of the Welfare and Institutions Code (WIC). In compliance with WIC 653.5, a probation officer shall immediately make any investigation he or she deems necessary to determine whether proceedings in the juvenile court shall be commenced. If it is believed the minor is a CSE victim, probation will work in collaboration with the CSEC Response Team to determine the most appropriate outcome for the youth.

### Placement

Child Welfare Services will establish safe and secure emergency transitional placements for CSE youth. Based on the situation, emergency placement may include the hospital, parents/guardians, a Family Care Network Incorporated (FCNI) therapeutic foster home, or Juvenile Hall. The CSEC Collaborative Response Team is committed to provide the youth with services in their placement based on the youth's needs.

### Community Agency Response Flowchart:



### **CSE and At-Risk Youth Continuum of Care**

#### Key Principles

The expectation of Community Partners will be to provide a continuum of care to CSE youth which will

Page 9 of 16

include public health, harm reduction, and re-programming “in the life” mentality.

Key Principles to serving CSE youth:

1. Safety planning for both the youth and the service providers
2. Collaboration across the agencies
3. Trust and relationship building to foster consistency
4. Culturally competent and appropriate service provision
5. Trauma-informed interventions

### San Luis Obispo County Service Providers

- **Atascadero Bible Church – (805) 466-2051**

6225 W. Mal, Atascadero, CA 93422

**Agency Role:**

- Will work with victims based on their needs for support groups, services and counseling that is offered by the church

**Services:**

- GriefShare - A thirteen-week support group that is open to anyone which features biblical concepts for healing from grief. In each group, a video seminar is first done, followed by a small group discussion, and a workbook is given to do journaling and personal study exercises. Visit [www.griefshare.org](http://www.griefshare.org) for more information
- The Landing – Targets and assists teenagers to break patterns of unhealthy behavior. Dealing with problems at home or school, bullying, addictions, cutting, self-image, acceptance & rejection, children of dysfunctional families, divorce, abuse, and loneliness
- Celebrate Recovery – A Christ-Centered Recovery Program is held Fridays at 7:00pm (6:15pm for dinner). A large group session is first conducted, and then separated into the Open Share Group for Men and Women

- **Child Welfare Services San Luis Obispo County – (805) 781-KIDS**

3433 S. Higuera St., San Luis Obispo, CA 93401

**Agency Role:**

- Lead the development of the interagency protocol
- Participate in the MDT
- Convene and serve as lead agency of CSEC Steering and Collaborative Committee
- Lead and support local CSEC outreach and training
- Provide a 24-hour Hotline and Immediate Response to receive CSEC referrals
- Provide Placement resources
- Provide Case Management
- Connect and assist the youth in navigating local resources
- Foster connections to develop a safety network for the youth
- Develop safety and case plans to fit CSEC needs in collaboration with other provider agencies
- Provide aggregate child welfare data on identified CSEC to steering committee including, but not limited to, the current status of each youth, (e.g. placement type, AWOL, etc.), the placement type, and services received
- Provide court reports pertaining to victim’s case as needed

**Services:**

<http://www.slocounty.ca.gov/dss.htm>

- **Community Action Partners of San Luis Obispo (CAP-SLO) – (805) 544-4355**

1030 Southwood Dr., San Luis Obispo, CA 93401

**Agency Role:**

- Refer to and/or collaborate with Victim/Witness to help victims access and exercise their legal rights
- Provide cross training as needed/requested, including Victim/Witness participation in annual volunteer and staff trainings

**Services:**

- San Luis Obispo County resources for teens website – [theslodelowdown.org](http://theslodelowdown.org)
- Homeless Services - Offering emergency shelter, on-site information and referral services, and assistance in finding permanent housing
- Family Support Services - Strengthen and support families to help prevent child abuse and neglect in San Luis Obispo County. Through parent education, prevention, and intervention, a family advocate can work with schools and other service providers to assess the unique challenges of each family and create solutions for success

- **Family Care Network Incorporated (FCNI) – Ph: (805) 781-3535 Toll Free: 866-781-3535**

1255 Kendall Rd., San Luis Obispo, CA 93401

**Agency Role:**

- Provide a CSEC trained and skilled Therapeutic Foster Family within its Wraparound Foster Care Program (when referrals received by the Department of Social Services).
- Utilize a Child & Family Team (CFT) to facilitate a strength-based, needs-driven, trauma-informed treatment plan for every client.
- Provide social work, case management, therapeutic/mental health services and "whatever it takes" to promote health and well-being for victims of sexual exploitation.

- **Immigration Services – Kevin C. Gregg Immigration Attorney (805)296-1004**

1104 Vine St. Ste. B, Paso Robles, CA 93446

**Agency Role:**

- Assists with immigration services in obtaining T-Visas and U-Visas and Special Immigrant Juvenile Status.

- **Central Coast Freedom Network– Ph: (785)251-3733 Email: [info@ccfreedomnetwork.org](mailto:info@ccfreedomnetwork.org)**

**Website:**[www.ccfreedomnetwork.org](http://www.ccfreedomnetwork.org)

1775 Calle Joaquin, San Luis Obispo, CA 93405

**Agency Role:**

- Partners with the community to network resources for survivors of labor trafficking, sex trafficking, and commercial sexual exploitation. Service providers may request resources on behalf of a survivor, or a survivor may directly contact CCFN for assistance.

**Services:**

- Emergency/Transitional resources may include:

- Rental support
    - Utility support
    - Groceries
    - Transportation assistance
  - Ongoing support may include:
    - Tutoring
    - Child care
    - Career development
    - Mentorship
    - Educational support
  - Connect victims of CSEC with screened volunteers or pro-bono or discounted professional services
  - Provide education to service organizations, faith based groups, business owners, service providers, teachers and youth
- 
- **Juvenile Probation Department San Luis Obispo County, (805) 781-5352**  
1730 Bishop St., San Luis Obispo, CA 93401  
**Agency Role:**
    - Participate in the development of the interagency protocol
    - Participate in the MDT
    - Participate in the Steering Committee
    - Any minor booked into the Juvenile Hall is assessed during the admission process
    - Should the minor be determined to meet CSEC criteria based on either the booking charge, or admission investigation process, a Suspected Child Abuse Report (SCAR) will be completed.
    - The SCAR will be forwarded to both Child Welfare Services and the appropriate Law Enforcement Agency having jurisdiction over the suspected CSEC matter.
    - Should the minor require any medical or therapeutic services while detained which are not available in custody, Juvenile Hall Staff will ensure transportation to those services are provided.
    - They will provide victim/witness advocates assigned to juvenile cases with Juvenile Court records for their confidential use in assisting victims.
    - Probation will collaborate with other agencies to ensure a safety and service plan is in place prior to releasing the minor from Juvenile Hall and consider the elements of the CSEC matter in determining whether the filing of a WIC 602 petition should be requested.
    - Probation will provide cross training to staff as needed/requested.
- 
- **RISE – Office hours (805) 226-5400, Toll Free 24-HR Crisis Line 1-855-886-RISE**  
51 Zaca Ln. Suite 140, San Luis Obispo, CA 93401  
1030 Vine St., Paso Robles, CA 93446  
**Agency Role:**
    - Participate in the development of the interagency protocol

- Participate in the MDT
- RISE will provide advocacy, services and support through confidential state-certified crisis counselors

**Services:**

- For survivors 12 years and older, services may include:
  - 24-hour crisis line / Walk-in crisis support sessions
  - Temporary restraining order assistance
  - Accompaniments to all Law Enforcement interviews and SART exams
  - Advocacy on behalf of client with Law Enforcement, SART Office, DA's Office, Social Services, etc.
  - Individual clinical counseling
- For survivors over 18 years old, services may include:
  - All services listed above
  - Shelter in a RISE safe house (up to 90-days)
  - Case management
  - Group clinical counseling
- For family and friends of survivors, services may include:
  - 24-hour crisis line
  - Walk-In crisis support sessions
  - Individual clinical counseling

- **San Luis Obispo County Behavioral Health**  
2178 Johnson Ave., San Luis Obispo, CA 93401

**Agency Role:**

- Participate in the development of the interagency protocol
- Participate in the MDT
- Participate in the Steering Committee
- Perform assessment of CSEC victim's mental health and recommend services
- Coordinate specialized mental health services for victim
- Based on the needs of the CSE youth, Behavioral Health will provide Drug and Alcohol Services, counseling, and Mental Health therapy

**Services:**

**Drug and Alcohol Services – (805) 781-4275**

- Offer a variety of services and programs to help people with drug and alcohol problems, including public walk-in clinics, prevention programs, youth and adult programs, and court-mandated programs.

**Mental Health – (805) 781-4700**

- Offer mental health treatment services for our county's youth, adults, and senior citizens and help with family, personal, or psychiatric issues. Clinics are located in the North County, South County, and in San Luis Obispo.

- **San Luis Obispo County CSEC Speakers Bureau – (805)781-1875**

**Agency Role:**

- Offer a variety of CSEC trainers from different local agencies to provide basic CSEC 101 or Human Trafficking 101 training to local community stakeholders.

**Services:**

- Each trainer is from a different field of work to allow for a more comprehensive, relatable training for each agency's needs.

- **Public Health -- Suspected Abuse Response Team (SART) – Office hours call (805) 781-4878, or After Hours call Dispatch (805)781-4550**

2180 Johnson Ave., San Luis Obispo, CA 93401

**Agency Role:**

- Participate in the development of the interagency protocol
- Participate in the MDT
- Participate in the Steering Committee
- Provide a comprehensive exam and evaluate the patient's medical needs (if patient has severe injuries or strangulation they must be seen at a Hospital Emergency Room).

**Services:**

- Sexually Transmitted Infections (STI) testing included in the examination and medication to treat.
- Provide medication for any vaginal infections present (other than STI's).
- Emergency contraception and prophylactic antibiotics for GCand Chlamydia are discussed.
- Connect patients with advocacy from RISE.
- Referrals are provided for follow-up medical care, family planning, and counseling.

- **District Attorney --Victim Witness Assistance Program – (805) 781-5821**

1050 Monterey St., San Luis Obispo, CA 93408

**Agency Role:**

- Participate in the development of the interagency protocol
- Participate in the Steering Committee
- Work to reduce the trauma, frustration and inconvenience experienced by victims, witnesses, and family members affected by crime.
- Provide initial crisis intervention, advocacy, direct counseling, referrals and related victim services for human trafficking victims.
- Collaborate with cooperating agencies and Mandated Reporters to ensure that appropriate referrals for services are directed to the responsible agency
- Conduct outreach programs to help identify victims and improve awareness of human trafficking.
- Assist all eligible victims with applications to the State Victim Compensation Program (VCP).
- The District Attorney's Child Abuse Interview Specialist (CAIT personnel) will coordinate with Victim/Witness to provide support to parents and families as outlined in the CAIT protocol.

- Coordinate with local women's shelters to provide safety and advocacy
- Assist in informing human trafficking crime victims and witness of their statutory rights and how to exercise those rights.

**Services:**

- Provide a wide variety of services to victims of crime and their families, in addition to supporting victims and witnesses throughout the criminal justice process.
  - Inform victims of their constitutional and statutory rights under California law, and how to exercise those rights.
- **Women's Shelter Program – Contact (805) 473-6507 for Counseling Intake hours are Monday-Friday, 9:00am - 5:00pm**  
PO Box 125, San Luis Obispo, CA 93406

**Agency Role:**

- Free trauma-informed counseling for children/teens, ages 3 through 17, who have been abused.

**Services:**

- Counseling available in SLO, South County and local school sites.
- Additionally, counseling available for victims of intimate partner violence (over 18).
- They will refer to and/or collaborate with Victim/Witness to help victims access and exercise their legal rights.
- Provide cross training as needed/requested, including Victim/Witness participation in annual volunteer and staff trainings.
- Will assist human trafficking victims and witnesses and coordinate services with community partners.

**Other Agency Roles**

- **Department of Homeland Security Camarillo Office – (805) 384-4946**  
**Homeland Security Investigations (HSI) Tip Line number is: (866) 347-2423 (24 hours/7 days a week)**
  - The U.S. Department of Homeland Security (DHS), in particular U.S. Immigration and Customs Enforcement (ICE) Homeland Security Investigations (HSI), pursues collaborative investigations with other law enforcement agencies at the international, federal, state, local, county and tribal level.
  - The Department will collaborate with investigative authority, such as code inspectors, labor officials, and child welfare investigators.
  - The Department's goal is to work with law enforcement colleagues to protect and stabilize victims, prosecute offenders and prevent additional human trafficking cases.
- **Federal Bureau of Investigations (FBI) – (310) 477-6565**
  - FBI will assist Law Enforcement through the use of two national initiatives as the FBI investigates crimes against children and civil rights violations involving the alleged human trafficking of adult and minor individuals.
  - These federal investigations may involve U.S. Citizens or individuals from other countries, including person(s) who are undocumented.

- Through its Child Exploitation Task Force and collaborative partnerships with local Law Enforcement assist 'locally led' efforts to investigate human trafficking, criminal activity of pimps and traffickers for the recovery of child victims.
  - The FBI's Victim Assistance Program works with federal and local law enforcement, Child Protective Services and other local government and non-profit agencies to assist identified victims of trafficking with a multitude of services including, but not limited to; crisis intervention, specialized referrals, and legal or immigration remedies (as appropriate).
  - Cases investigated by the FBI may be referred to the U.S. Attorney's Office for federal prosecution or to the local District Attorney for state prosecution.
- **San Luis Obispo County of Education, Cuesta College, Cal Poly University**
    - Participate in the development of the interagency protocol
    - Participate in the Steering Committee
    - Assess CSEC's educational needs, recognizing that these children may be behind in school or school may be a trigger because they were recruited from school
    - Coordinate appropriate response to meet victim's education needs, including but not limited to, assisting in enrolling youth, addressing truancy issues, ensuring credits have been gathered and applied, etc.

The CSEC Collaborative will be adding additional agencies as we move forward

### **Data and Coordination**

#### Data Collection

Protocols and strategies will be utilized to coordinate, collect, and share data across systems. This will be done to better understand the scope of work between agencies, identify issues within the system and process, track youth who have been sexually exploited, and document which resources are being used.

Each agency will be responsible for collecting and maintaining a data system that tracks the following: Number of youth screened, age, gender, risk level assessed, services provided, name of agencies youth is referred to, if youth is identified as being a CSEC victim, and if a SCAR is made to Child Welfare Services. This data will be submitted to and housed by the Department of Social Services and will be available to all San Luis Obispo County CSEC Collaborative agencies. The youth's name must be redacted by the agency submitting the Screening Tool due to confidentiality.

The information required for Data Collection will include: the age of the youth, gender, zip code in which they reside, risk level assessed, services provided, name of agencies the youth is referred, if the youth is identified as being a CSEC victim, and whether a SCAR is made to Child Welfare Services. These items will be available to document on the front and back of the Screening Tool.

The redacted copy of the Screening Tool for Data Collection will be sent via fax or mail to:

- Ben King, Program Manager in Child Welfare Services  
P.O. Box 8119, San Luis Obispo, CA 93401-8119  
Office number: (805) 781-1839  
Fax: (805) 781-1846  
([brking@co.slo.ca.us](mailto:brking@co.slo.ca.us))