



# **SAN LUIS OBISPO COUNTY COMMISSION ON AGING**

**WHAT CAN THE COMMISSION DO FOR YOU?**

**First introduced to Community 2014. Latest revision 2017.**

# SLO COUNTY COMMISSION ON AGING

- The Commission was established by the Board of Supervisors on May 15

## 1984

- PURPOSE: To assure quality, adequacy and coordination of available services for the senior population



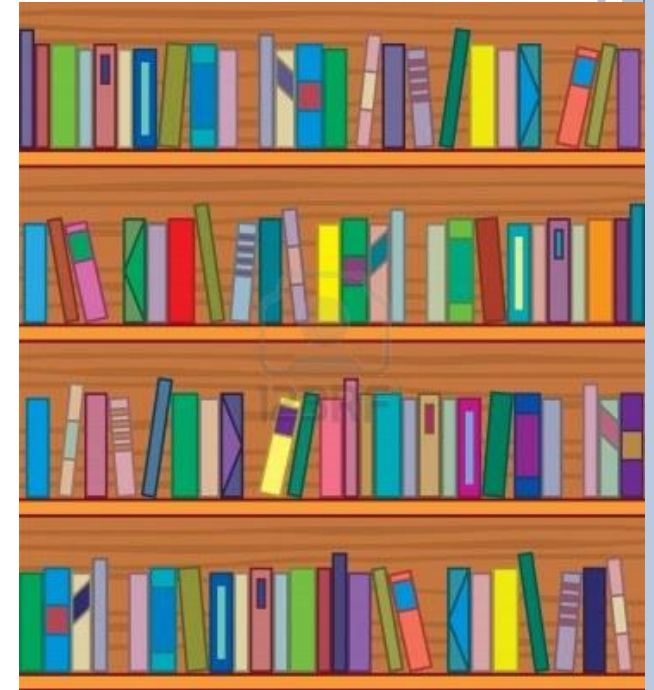
# Remember the 80's.....?



**TECHNOLOGY**



**HAIR STYLES**



**BOOKS !**



Do you remember what the problems of an aging population were in the 80's and 90's?

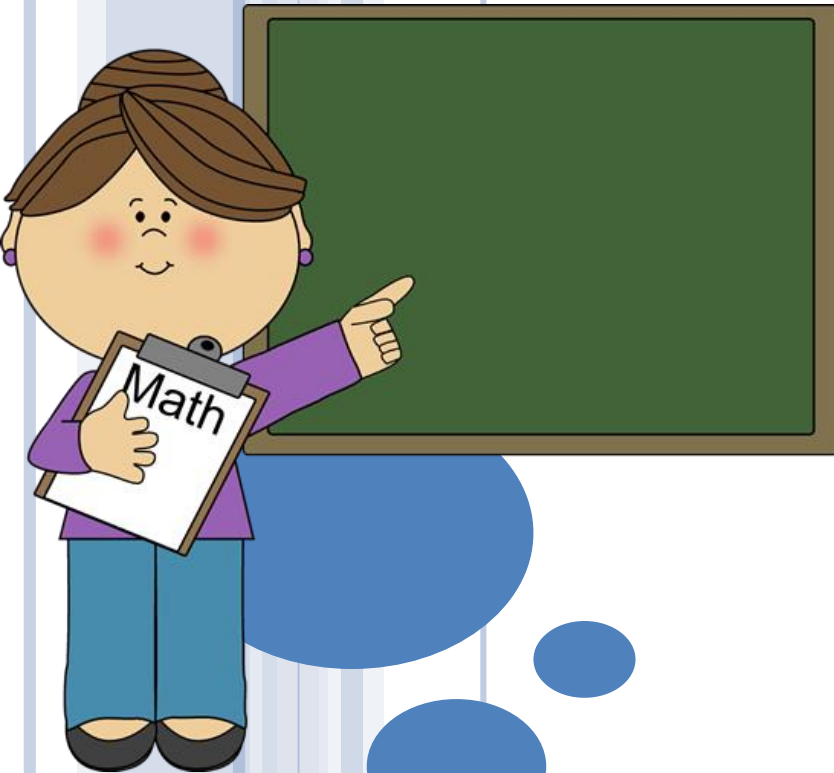
- ▶ *Affordable Housing and Home Repair*
  - ▶ *Transportation*
    - ▶ *Isolation and Depression*
      - ▶ *Nutrition*
        - ▶ *Affordable Caregiving*



These are the same concerns that  
we have, today, in our County!



# Time out for some facts!



## San Luis Obispo County **SENIOR POPULATION in 2015**

per California Department of Aging

**68,092**      **Seniors (60 +)**

**12,850**      **Living alone**

**4,915**      **Low income**

**19,777**      **75 +**

**2,700**      **(13%) Low income**

# REAL COST MEASURE

## WHAT IT REALLY COSTS TO LIVE IN SLO COUNTY

Single Elder

**\$25,675**

Elder Couple

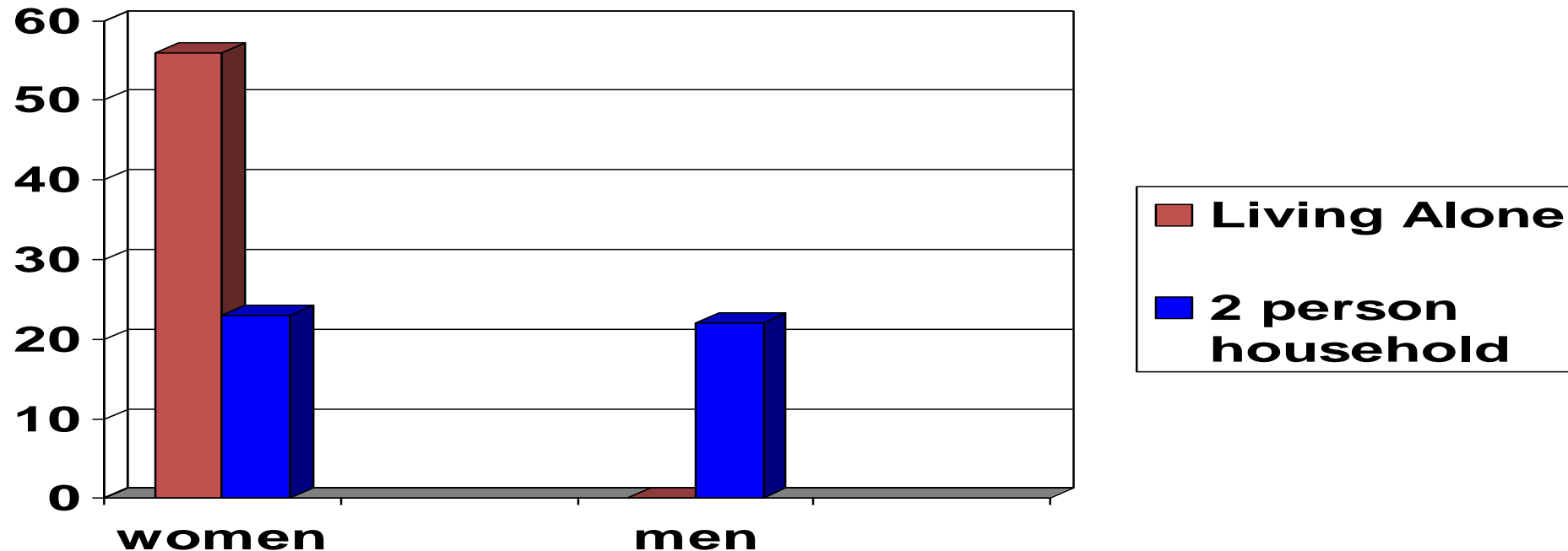
**\$36,278**

- *Definition:* The Real Cost Measure builds a bare-bones budget that reflects constrained yet reasonable choices for essential expenses: housing, food, transportation, health care, taxes and childcare.



# San Luis Obispo County

## Percent of Adults Aged 65+ Who Are Economically Insecure



Based on income needed, *over one half of elder women* living alone in SLO County cannot make ends meet

U.S. Census Bureau, 2006 ACS Data





# **COSTS OF LONG TERM CARE 2015**

data from Cal Pers Long-Term Care

<b>TYPE OF CARE</b>	<b>CA AVERAGE</b>	<b>BAKERSFIELD</b>	<b>LOS ANGELES</b>
NURSING Home Private Room	<b>\$338/day</b>	<b>\$278</b>	<b>\$376</b>
NURSING Home Semi-Private	<b>\$263/day</b>	<b>\$235</b>	<b>\$263</b>
ASSISTED Living Studio	<b>\$3,879/mo</b>	<b>\$3,446</b>	<b>\$3,980</b>
ASSISTED Living 1 bedrm	<b>\$4,576/mo</b>	<b>\$3,790</b>	<b>\$4,721</b>
ASSISTED Living 2 bedrm	<b>\$4,433/mo</b>	<b>\$3,160</b>	<b>\$4,818</b>
HOME HEALTH AIDE	<b>\$25/hour</b>	<b>\$21</b>	<b>\$22</b>





## **Here's how the Commission tries to fulfill its mission...**

- ▶ **ADVOCACY**
- ▶ **PARTNERSHIPS**
- ▶ **EDUCATION**
- ▶ **DEDICATION**
- ▶ **PROVIDING A PLATFORM**

# ► ADVOCACY ◀

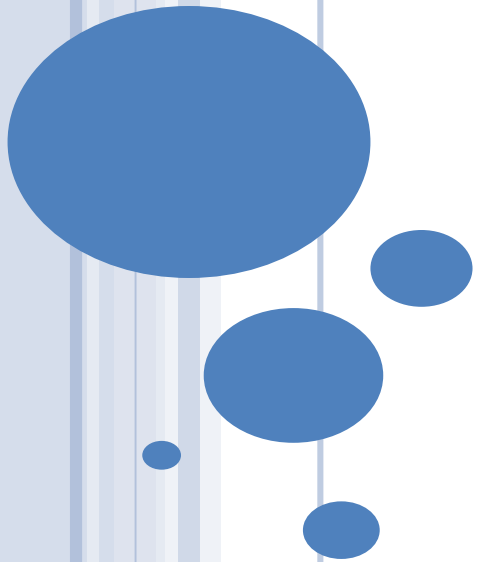


2017

- COA recommends and advocates to the Board of Supervisors on behalf of the County's senior population.



# ADVOCATING FOR WHAT?



**WHEN YOU ARE NO  
LONGER ABLE TO  
MAINTAIN YOUR HOME  
OR YOU NEED TO WIDEN  
A DOORWAY FOR A  
WHEELCHAIR....**

**WHAT THEN?**



# WHEN DRIVING IS NO LONGER AN OPTION WHAT THEN?



**Rides with the Grandchildren**



# COA represents Seniors



**at Stakeholder meetings**



**at City & County Planning  
meetings**



## ► DEDICATION ◀

**Our Commission members believe that  
SAN LUIS OBISPO can be a senior friendly community.  
A community that provides the opportunities that allow  
our frail elders  
to remain safely in their homes  
with dignity, independence, and quality of life  
for as long as possible.**





Thanks to the “DEDICATION” of our Commissioners  
**SLOCOA**  
**PROVIDES A PLATFORM**  
for seniors to voice concerns county  
wide



**With Monthly Meetings at  
The Veteran's Lounge**

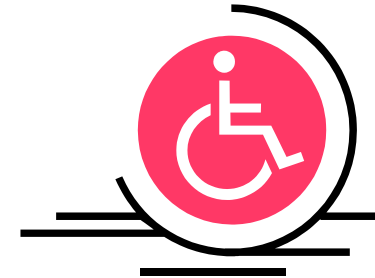
**10am, Third Friday of the month (except Dec)**



# PUBLIC WELCOME



**HEARING FRIENDLY**



**WHEELCHAIR ACCESS**



**and...WE ARE READY TO LISTEN**

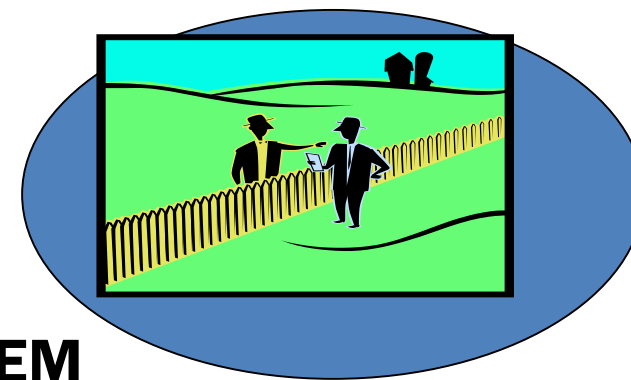


**to your Senior concerns**





**COMPLAINING TO NEIGHBORS  
IS A GOOD START.....  
BUT THEN BRING THE PROBLEM  
to the**



**SAN LUIS OBISPO  
COUNTY  
COMMISSION ON AGING ☺**



**AND UTILIZE THE OPPORTUNITY TO REACH  
THE PEOPLE  
WHO MAKE THE DECISIONS...**

**THAT'S WHAT THE COMMISSION ON AGING  
CAN DO FOR YOU !**

