



COUNTY OF SAN LUIS OBISPO

ADMINISTRATIVE OFFICE – OFFICE OF EMERGENCY SERVICES

Wade Horton *County Administrative Officer*

Scott Jalbert *Emergency Services Manager*

Date: January 13, 2023

Contact: County OES (805) 781-4300

EXPANDED EVACUATION WARNING ISSUED FOR OCEANO RESIDENTS NEAR ARROYO GRANDE CREEK LEVEE

San Luis Obispo, CA – San Luis Obispo County has issued an Evacuation Warning for Oceano residents in the area around the Arroyo Grande Creek Levee / Oceano Lagoon to include:

- North of the Arroyo Grande Creek Levee
- South of Wilshire Ave, Hwy 1, and Pier Ave
- East of Strand Way

And in addition:

- North of HWY 1, West of 21st, South of Ocean St

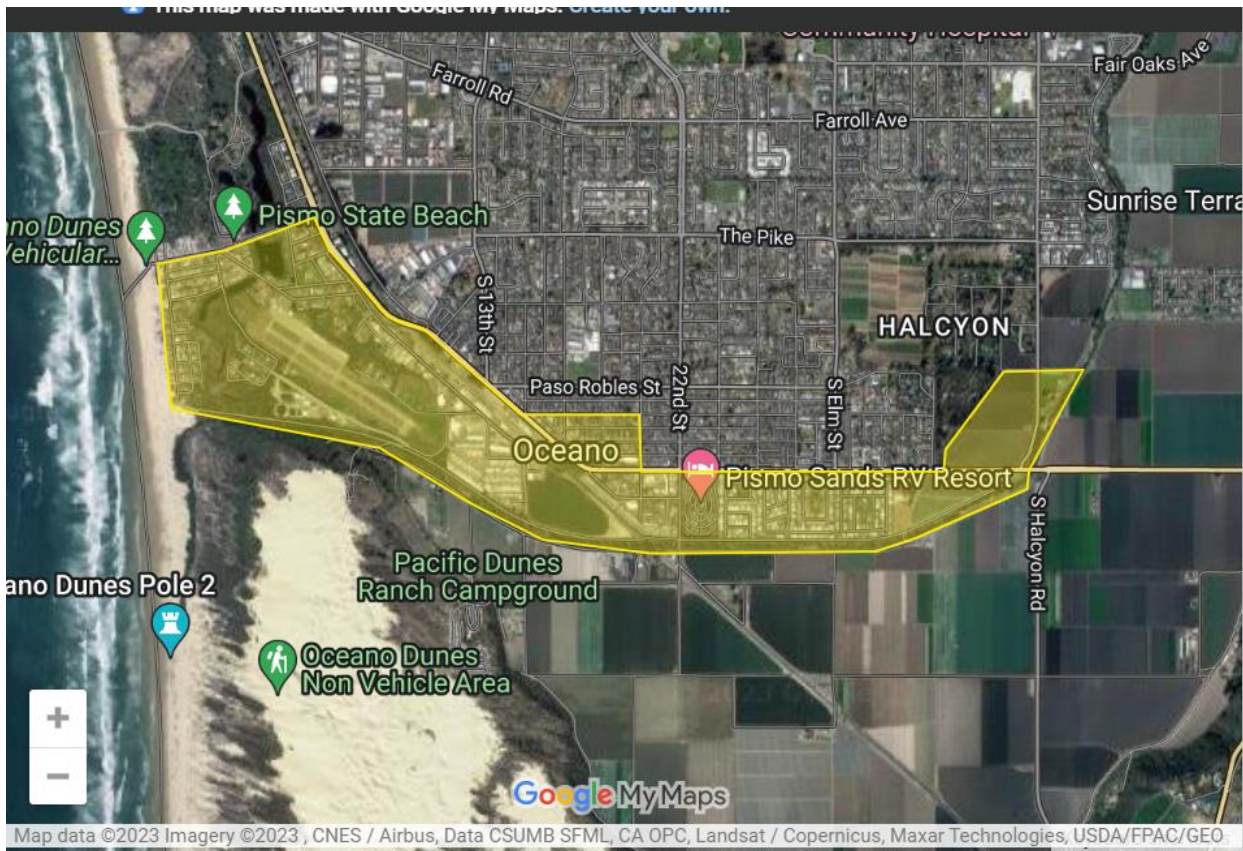
Residents in this area should be prepared for possible flooding and evacuation as additional storms hit the County. Residents are reminded that if evacuations become necessary, emergency officials will use notification methods as appropriate such as Wireless Emergency Alerts, reverse telephone notification system and local and social media.

The area south of the levee is still under an Evacuation Order. It is observed that residents are returning to the area and we want to be clear that this area will most likely flood first if there is another breach of the levee in the storms coming this weekend. Anyone staying or returning to this area is doing so at their own risk.

Detailed maps of the area under Evacuation Warning are available on [ReadySLO.org](https://www.ready.slo.org).

For more storm preparation information and locations to obtain sand and sandbags, visit [ReadySLO.org](https://www.ready.slo.org). Follow the County of San Luis Obispo Office of Emergency Services on [Twitter @slocountyoes](https://twitter.com/slocountyoes) and [Facebook.com/SLOCountyOES](https://www.facebook.com/SLOCountyOES).

Evacuation Warning Area:



###

County of San Luis Obispo Government Center

1055 Monterey Street | San Luis Obispo, CA 93408 | (P) 805-781-4300 | (F) 805-781-5005

info@slocounty.ca.gov | slocounty.ca.gov