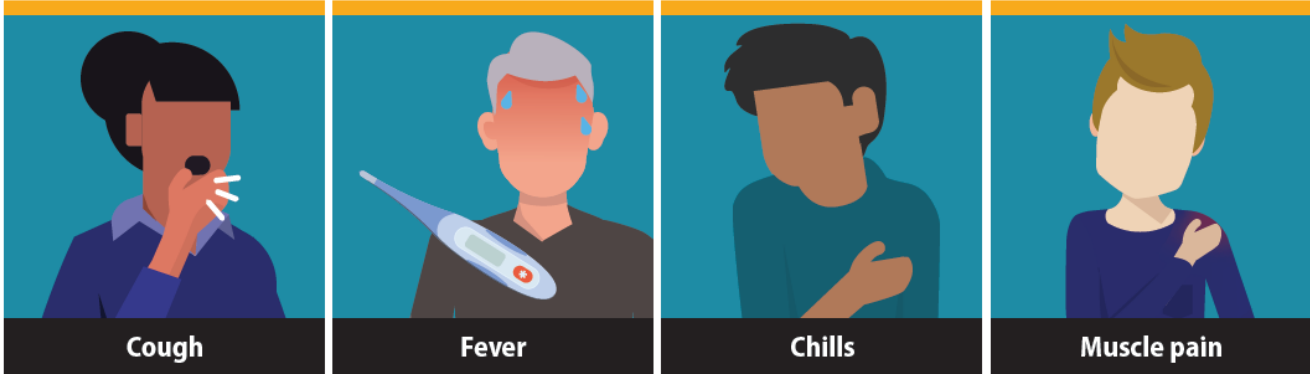


# Please read before entering.

## IF YOU HAVE



## PLEASE DO NOT ENTER THE OFFICE

Please call us at \_\_\_\_\_ to speak someone about alternative methods to seek the services you are need of.

**Thank you for helping keep the community safe!**



Please also call SLO County Public Health at 805-781-5500 if you are experiencing the above symptoms for guidance as they are commonly associated with COVID-19.